

Xtreme® Windows & Door

Flame Zone

TECHNICAL DATA

Features & Benefits

Size Range

Installation

Please note that drawings are not to scale

Xtreme® Flame Zone | Mk 1 | 25 Feb 2010

Features & Benefits

Xtreme® Windows & Doors Flame Zone

- | | | |
|---|---|--|
| <p>1 Bushfire Features
Xtreme® Flame Zone fully integrated System is a compact design that overcomes spacial and aesthetic restrictions other fire systems prescripbe</p> <p>2 It is a cost efficient solution.</p> <p>3 Provides full Flame Zone protection requiring FZ rating.</p> <p>4 Fully Compliant to AS3959-2009, and AS1530.8.2-(2007).</p> <p>5 The system can easlily be activated externally by fire fighting authorities.</p> <p>6 Excellent radiant heat shielding properties.</p> <p>7 Utilises standard toughened glass.</p> <p>8 Unobstrusive design.</p> | <p>9 Easily maintained.</p> <p>10 Light weight.</p> <p>11 Energy Efficiency Options are available.</p> <p>12 Xtreme® Flame Zone System is available in a wide range of window and door sizes, styles, colours and combinations.</p> <p>13 Windows are available in Sliding, Casement, Awning and Fixed.</p> <p>14 Doors are available in Sliding, Sliding Stacker, Hinged and Bifold.</p> <p>15 Maximum width of Xtreme® Flame Zone Window System is 3000mm with height at 1500mm.</p> <p>16 Maximum width of Xtreme® Flame Zone Door System is 2400mm with height at 2400mm.</p> | <p>17 Maximum Glass area is 2.4m².</p> <p>18 Available in powdercoat finishes, woodgrain imaged or galvanised finish.</p> <p>19 Stainless steel screens are fitted to all opening sashes as per AS3959.-2009.</p> |
|---|---|--|

Product Range

Xtreme® Windows

Available in Sliding, Casement, Awning and Fixed.

Windows are glazed with 5mm toughened glass or 5mm combinations in IGU's (Insulated Glass Unit).

Maximum height is 2400mm with width at 2400mm.

Maximum glass area is 2.4m².

Larger systems are available upon consultation with Trend® Windows & Doors Xtreme® Specialists.

Xtreme® Doors

Available in Sliding, Sliding Stacker, Single or Double Hinged and Bifold Doors.

Doors are glazed with 6mm toughened glass or 6mm combinations in IGU's (Insulated Glass Unit).

Maximum height is 2400mm with width at 2400mm.

Maximum glass area is 2.4m².

Larger systems are available upon consultation with Trend® Windows & Doors Xtreme® Specialists.

Please note that drawings are not to scale

Xtreme® Flame Zone | Mk 1 | 25 Feb 2010

Confidentiality Notice: This document and the information it contains are copyright and confidential to Trend® Windows & Doors Pty Limited. Disclosure, use and copying in any form whatsoever, except as authorised by Trend® Windows & Doors in writing, are strictly prohibited. Patents and Design Registrations pending.

Size Range

Xtreme® Windows & Doors Flame Zone | **Xtreme® Sliding Window**

STUD OPENING WINDOW	666	906	966	1146	1256	1626	1856	2226	2456
	610	850	910	1090	1200	1570	1800	2170	2400
656									
996									
1086									
1256									
1426									
1696									
1856									
2091									

All windows and doors are designed to 700pa velocity and 150pa water rating. For higher ratings consult Xtreme® Windows & Doors

Maximum frame height is 2400mm
 Maximum frame width is 2400mm
 Maximum single glass area is 2.4m²
 Screens to be fitted to operating sash area only

Xtreme® Windows & Doors have been tested to AS1530.8.1 to comply to Section 8, Construction For Bushfire Attack Level 40 (BAL-40), Radiant Heat 40kW/m², AS3959-2009 (Ref: CSIRO Test Reports FSZ 1372 & FSZ 1373) and must be used in conjunction with Xtreme Flame Zone System.

Ordering Details

All windows are illustrated as viewed from outside. Codes shown are for plain windows.

Manufactured from 65mm aluminium extrusion & 55mm Sash material. The first two numbers of code indicate approximate height, the last two numbers indicate approximate width.

Sash Style Options:
 E indicates Xtreme Option.
 Eg window code QPSF0906E

Configuration Options:
 SF indicates Sliding/Fixed
 FS indicates Fixed/Sliding
 SFS indicates Sliding/Fixed/Sliding
 F indicates Fixed
 T after the size indicates a Transom

Xtreme® Flame Zone fully integrated window, door and curtain system has been assessed to AS1530.8.2 to comply to Section 9, Construction For Bushfire Attack Level FZ (BAL-FZ), Radiant Heat of more than 40kW/m², AS3959-2009. (Ref: CSIRO Report FCO 2766/3826)

For full details of Standards requirements for individual products or for information on the above Reports, please contact Trend® Windows & Doors Technical Department on (02) 9840 2000.

Please note that drawings are not to scale

Xtreme® Flame Zone | Mk 1 | 25 Feb 2010

Size Range

Xtreme® Windows & Doors Flame Zone | Xtreme® Awning Windows

STUD OPENING WINDOW		666	906	966	1146	1256	1626	1856	2226	2456
		610	850	910	1090	1200	1570	1800	2170	2400
656	600									
		QPA0606E	QPA0608E	QPA0609E	QPA0611E	QPA0612E	QPA0616E	QPA0618E	QPA0622E	QPA0624E
996	940									
		QPA0906E	QPA0908E	QPA0909E	QPA0911E	QPA0912E	QPA0916E	QPA0918E	QPA0922E	QPA0924E
1086	1030									
		QPA1006E	QPA1008E	QPA1009E	QPA1011E	QPA1012E	QPA1016E	QPA1018E	QPA1022E	QPA1024E
1256	1200									
		QPA1206E	QPA1208E	QPA1209E	QPA1211E	QPA1212E	QPA1216E	QPA1218E	QPA1222E	QPA1224E
1426	1370									
		QPA1406E	QPA1408E	QPA1409E	QPA1411E	QPA1412E	QPA1416E	QPA1418E	QPA1422E	QPA1424E
1856	1800									
		QPA1806TE	QPA1808TE	QPA1809TE	QPA1811TE	QPA1812TE	QPA1816TE	QPA1818TE	QPA1822TE	QPA1824TE
2091	2035									
		QPA2006TE	QPA2008TE	QPA2009TE	QPA2011TE	QPA2012TE	QPA2016TE	QPA2018TE	QPA2022TE	QPA2024TE

All windows and doors are designed to 700pa velocity and 150pa water rating. For higher ratings consult Xtreme® Windows & Doors

Maximum frame height is 2400mm
 Maximum frame width is 2400mm
 Maximum single glass area is 2.4m²
 Screens to be fitted to operating sash area only

Xtreme® Windows & Doors have been tested to AS1530.8.1 to comply to Section 8, Construction For Bushfire Attack Level 40 (BAL-40), Radiant Heat 40kW/m², AS3959-2009 (Ref: CSIRO Test Reports FSZ 1372 & FSZ 1373)

Ordering Details

All windows are illustrated as viewed from outside. Codes shown are for plain windows.

Manufactured from 65mm aluminium extrusion.

The first two numbers of code indicate approximate height, the last two numbers indicate approximate width.

Sash Style Options:
 E indicates Xtreme Option.
 Eg window code QPA0906E
Configuration Options:
 A indicates Awning
 AF indicates Awning/Fixed
 AA indicates Awning/Awning
 AFA indicates Awning/Fixed/Awning
 T after the size indicates a Transom

Xtreme® Flame Zone fully integrated window, door and curtain system has been assessed to AS1530.8.2 to comply to Section 9, Construction For Bushfire Attack Level FZ (BAL-FZ), Radiant Heat of more than 40kW/m², AS3959-2009. (Ref: CSIRO Report FCO 2766/3826) and must be used in conjunction with Xtreme Flame Zone System.

For full details of Standards requirements for individual products or for information on the above Reports, please contact Trend® Windows & Doors Technical Department on (02) 9840 2000.

Please note that drawings are not to scale

Xtreme® Flame Zone | Mk 1 | 25 Feb 2010

Confidentiality Notice: This document and the information it contains are copyright and confidential to Trend® Windows & Doors Pty Limited. Disclosure, use and copying in any form whatsoever, except as authorised by Trend® Windows & Doors in writing, are strictly prohibited. Patents and Design Registrations pending.

Size Range

Xtreme® Windows & Doors Flame Zone | Xtreme® Casement Windows

STUD OPENING WINDOW	670	780	910	1260	1630	1860	2230	2460
	610	720	850	1200	1570	1800	2170	2400
1000								
1090								
1260								
1430								
1860								
2095								
2095								

All windows and doors are designed to 700pa velocity and 150pa water rating. For higher ratings consult Xtreme® Windows & Doors

Maximum frame height is 2400mm
 Maximum frame width is 2400mm
 Maximum single glass area is 2.4m²
 Screens to be fitted to operating sash area only

Xtreme® Windows & Doors have been tested to AS1530.8.1 to comply to Section 8, Construction For Bushfire Attack Level 40 (BAL-40), Radiant Heat 40kW/m², AS3959-2009 (Ref: CSIRO Test Reports FSZ 1372 & FSZ 1373)

Ordering Details

All windows are illustrated as viewed from outside. Codes shown are for plain windows.

Manufactured from 65mm aluminium extrusion.

The first two numbers of code indicate approximate height, the last two numbers indicate approximate width.

Sash Style Options:
 E indicates Xtreme Option.
 Eg window code QPA0906E
Configuration Options:
 A indicates Awning
 AF indicates Awning/Fixed
 AA indicates Awning/Awning
 AFA indicates Awning/Fixed/Awning
 T after the size indicates a Transom

Xtreme® Flame Zone fully integrated window, door and curtain system has been assessed to AS1530.8.2 to comply to Section 9, Construction For Bushfire Attack Level FZ (BAL-FZ), Radiant Heat of more than 40kW/m², AS3959-2009. (Ref: CSIRO Report FCO 2766/3826) and must be used in conjunction with Xtreme Flame Zone System.

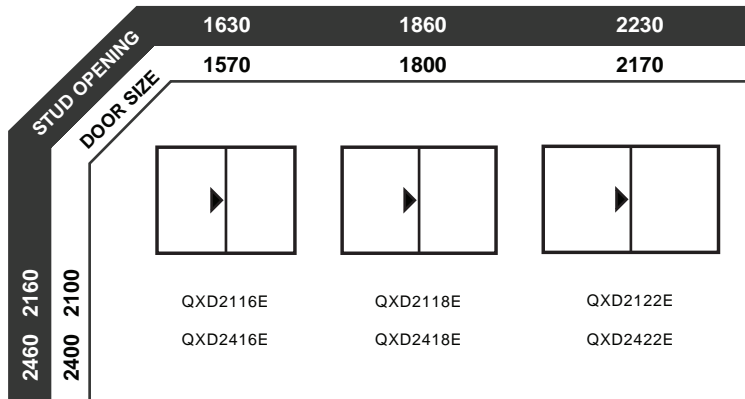
For full details of Standards requirements for individual products or for information on the above Reports, please contact Trend® Windows & Doors Technical Department on (02) 9840 2000.

Please note that drawings are not to scale

Xtreme® Flame Zone | Mk 1 | 25 Feb 2010

Size Range

Xtreme® Windows & Doors Flame Zone | **Xtreme® Sliding Door**



All windows and doors are designed to 700pa velocity and 150pa water rating. For higher ratings consult Xtreme® Windows & Doors

Maximum frame height is 2400mm
 Maximum frame width is 2400mm
 Maximum single glass area is 2.4m²
 Screens to be fitted to operating sash area only

Xtreme® Windows & Doors have been tested to AS1530.8.1 to comply to Section 8, Construction For Bushfire Attack Level 40 (BAL-40), Radiant Heat 40kW/m², AS3959-2009 (Ref: CSIRO Test Reports FSZ 1372 & FSZ 1373)

Ordering Details

All doors are illustrated as viewed from outside. Codes shown are for plain doors.

The first two numbers of code indicate approximate height, the last two numbers indicate approximate width

Sash Style Options:
 E indicates Xtreme Option.
 Eg door code QPXD2118E

Configuration Options:
 XF indicates Sliding/Fixed
 FX indicates Fixed/Sliding

General:
 Two panels doors available as reverse to brochure

Xtreme® Flame Zone fully integrated window, door and curtain system has been assessed to AS1530.8.2 to comply to Section 9, Construction For Bushfire Attack Level FZ (BAL-FZ), Radiant Heat of more than 40kW/m², AS3959-2009. (Ref: CSIRO Report FCO 2766/3826) and must be used in conjunction with Xtreme Flame Zone System.

For full details of Standards requirements for individual products or for information on the above Reports, please contact Trend® Windows & Doors Technical Department on (02) 9840 2000.

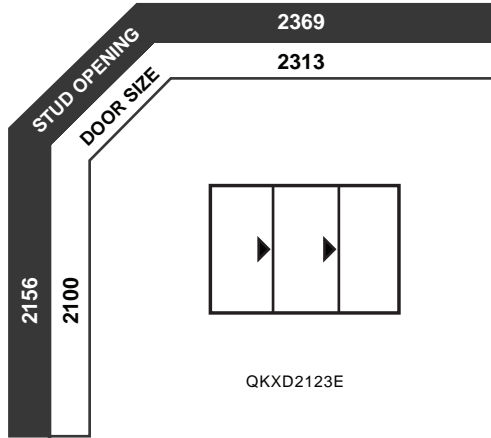
Please note that drawings are not to scale

Xtreme® Flame Zone | Mk 1 | 25 Feb 2010

Confidentiality Notice: This document and the information it contains are copyright and confidential to Trend® Windows & Doors Pty Limited. Disclosure, use and copying in any form whatsoever, except as authorised by Trend® Windows & Doors in writing, are strictly prohibited. Patents and Design Registrations pending.

Size Range

Xtreme® Windows & Doors Flame Zone | **Xtreme® Stacker Door**



All windows and doors are designed to 700pa velocity and 150pa water rating. For higher ratings consult Xtreme® Windows & Doors

Maximum frame height is 2400mm
 Maximum frame width is 2400mm
 Maximum single glass area is 2.4m²
 Screens to be fitted to operating sash area only

Xtreme® Windows & Doors have been tested to AS1530.8.1 to comply to Section 8, Construction For Bushfire Attack Level 40 (BAL-40), Radiant Heat 40kW/m², AS3959-2009 (Ref: CSIRO Test Reports FSZ 1372 & FSZ 1373)

Ordering Details

All doors are illustrated as viewed from outside. Codes shown are for plain doors.

The first two numbers of code indicate approximate height, the last two numbers indicate approximate width

Sash Style Options:
 E indicates Xtreme Option.
 Eg door code QKXD2123E

Configuration Options:
 XXF indicates Sliding/Sliding/Fixed
 FFX indicates Fixed/Fixed/Sliding

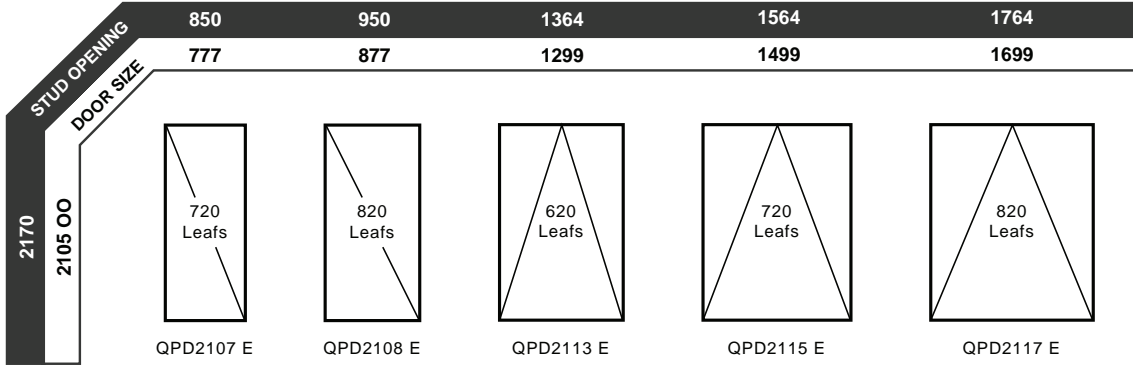
Xtreme® Flame Zone fully integrated window, door and curtain system has been assessed to AS1530.8.2 to comply to Section 9, Construction For Bushfire Attack Level FZ (BAL-FZ), Radiant Heat of more than 40kW/m², AS3959-2009. (Ref: CSIRO Report FCO 2766/3826) and must be used in conjunction with Xtreme Flame Zone System.

For full details of Standards requirements for individual products or for information on the above Reports, please contact Trend® Windows & Doors Technical Department on (02) 9840 2000.

Size Range

Xtreme® Windows & Doors Flame Zone | **Xtreme® Provincial Door**

NSW/VIC/SA/ACT



DOORS

820, 720 & 620 DOOR LEAFS



FL E

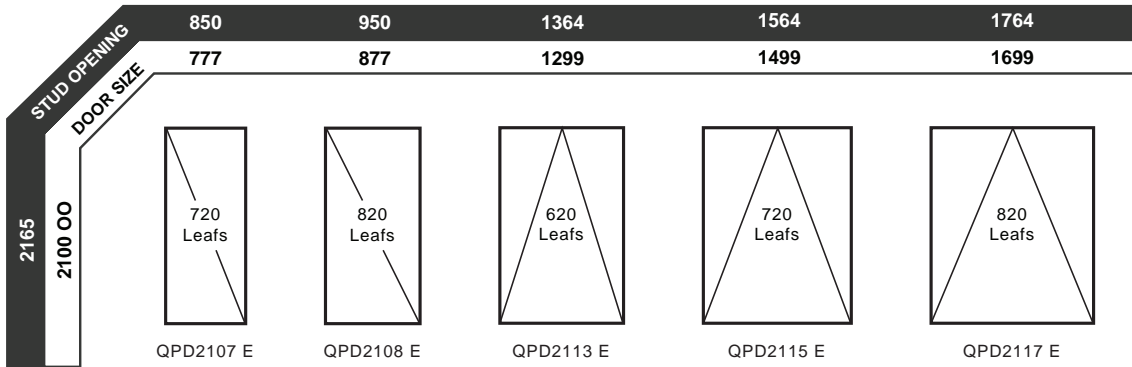
ALL STATES

All windows and doors are designed to 700pa velocity and 150pa water rating. For higher ratings consult Xtreme® Windows & Doors

Note: Open Out ONLY

Maximum frame height is 2400mm
Maximum frame width is 2400mm
Maximum single glass area is 2.4m²
Screens to be fitted to operating sash area only

QLD



DOORS

820, 720 & 620 DOOR LEAFS



FL E

Xtreme® Windows & Doors have been tested to AS1530.8.1 to comply to Section 8, Construction For Bushfire Attack Level 40 (BAL-40), Radiant Heat 40kW/m², AS3959-2009 (Ref: CSIRO Test Reports FSZ 1372 & FSZ 1373)

Xtreme® Flame Zone fully integrated window, door and curtain system has been assessed to AS1530.8.2 to comply to Section 9, Construction For Bushfire Attack

Level FZ (BAL-FZ), Radiant Heat of more than 40kW/m², AS3959-2009. (Ref: CSIRO Report FCO 2766/3826) and must be used in conjunction with Xtreme Flame Zone System.

For full details of Standards requirements for individual products or for information on the above Reports, please contact Trend® Windows & Doors Technical Department on (02) 9840 2000.

Please note that drawings are not to scale

Xtreme® Flame Zone | Mk 1 | 25 Feb 2010

Confidentiality Notice: This document and the information it contains are copyright and confidential to Trend® Windows & Doors Pty Limited. Disclosure, use and copying in any form whatsoever, except as authorised by Trend® Windows & Doors in writing, are strictly prohibited. Patents and Design Registrations pending.

Size Range

Xtreme® Windows & Doors Flame Zone | Xtreme® Bifold Doors

STUD OPENING		DOOR		FRAME WIDTH + 56mm		
FRAME HEIGHT + 56mm	2165 STANDARD HEIGHT	2400 MAX. HEIGHT	Frame Width	Leaf Directions	Leaf #	Door Code
2400 MAX. HEIGHT	2 PANELS 1800 MAX. WIDTH	1388		2L	ABF2214/2L E ABF2216/2L E ABF2218/2L E	
		1588				
		1788				
	3 PANELS 2400 MAX. WIDTH	2043		3L	ABF2220/3L E ABF2223/3L E ABF2226/3L E	
		2343				
		2046		2L 1R	ABF2220/2L1R E ABF2223/2L1R E ABF2226/2L1R E	
		2346				
		4 PANELS 2400 MAX. WIDTH	2400		3L 1R	ABF2227/3L1R E ABF2231/3L1R E ABF2235/3L1R E
			2400			
	2400			1L 3R	ABF2227/1L3R E ABF2231/1L3R E ABF2235/1L3R E	
	2400	2L 2R				ABF2227/2L2R E ABF2231/2L2R E ABF2235/2L2R E
	2400			4L	ABF2227/4L E ABF2231/4L E ABF2235/4L E	
2400		4R				ABF2227/4R E ABF2231/4R E ABF2235/4R E

All windows and doors are designed to 700pa velocity and 150pa water rating. For higher ratings consult Xtreme® Windows & Doors

Maximum frame height is 2400mm
Maximum frame width is 2400mm
Maximum single glass area is 2.4m²

Xtreme® Windows & Doors have been tested to AS1530.8.1 to comply to Section 8, Construction For Bushfire Attack Level 40 (BAL-40), Radiant Heat 40kW/m², AS3959-2009 (Ref: CSIRO Test Reports FSZ 1372 & FSZ 1373)

Ordering Details

All doors are illustrated as viewed from outside. Codes shown are for plain doors.

The first two numbers of code indicate approximate height, the last two numbers indicate approximate width

Sash Style Options:
E indicates Xtreme Option.
Eg door code QKXD2123E

Configuration Options:
XXF indicates Sliding/Sliding/Fixed
FFX indicates Fixed/Fixed/Sliding

Xtreme® Flame Zone fully integrated window, door and curtain system has been assessed to AS1530.8.2 to comply to Section 9, Construction For Bushfire Attack Level FZ (BAL-FZ), Radiant Heat of more than 40kW/m², AS3959-2009. (Ref: CSIRO Report FCO 2766/3826) and must be used in conjunction with Xtreme Flame Zone System.

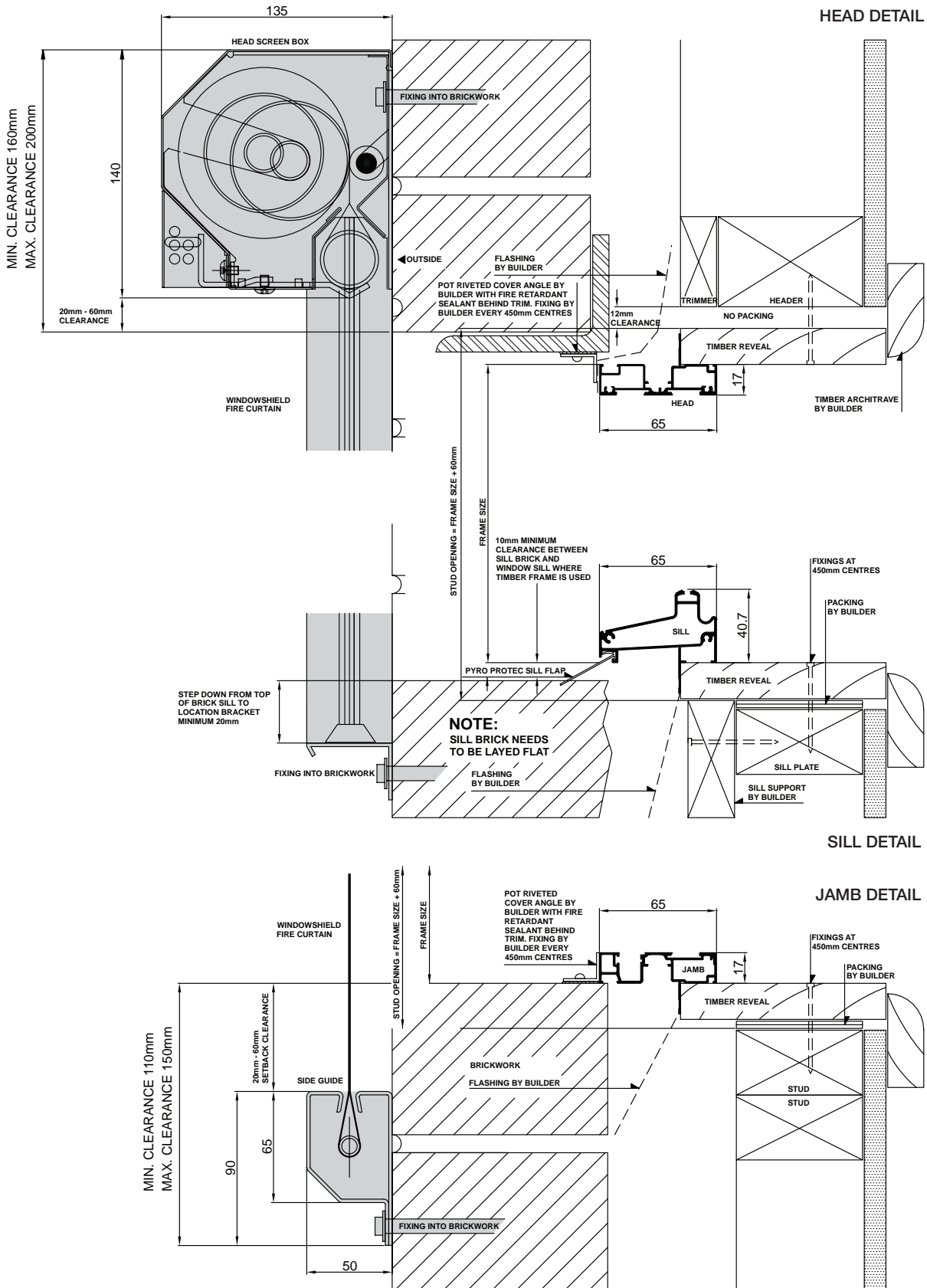
For full details of Standards requirements for individual products or for information on the above Reports, please contact Trend® Windows & Doors Technical Department on (02) 9840 2000.

Please note that drawings are not to scale

Xtreme® Flame Zone | Mk 1 | 25 Feb 2010

Installation

Xtreme® Windows & Doors Flame Zone | Xtreme® Sliding Window | Brick Veneer



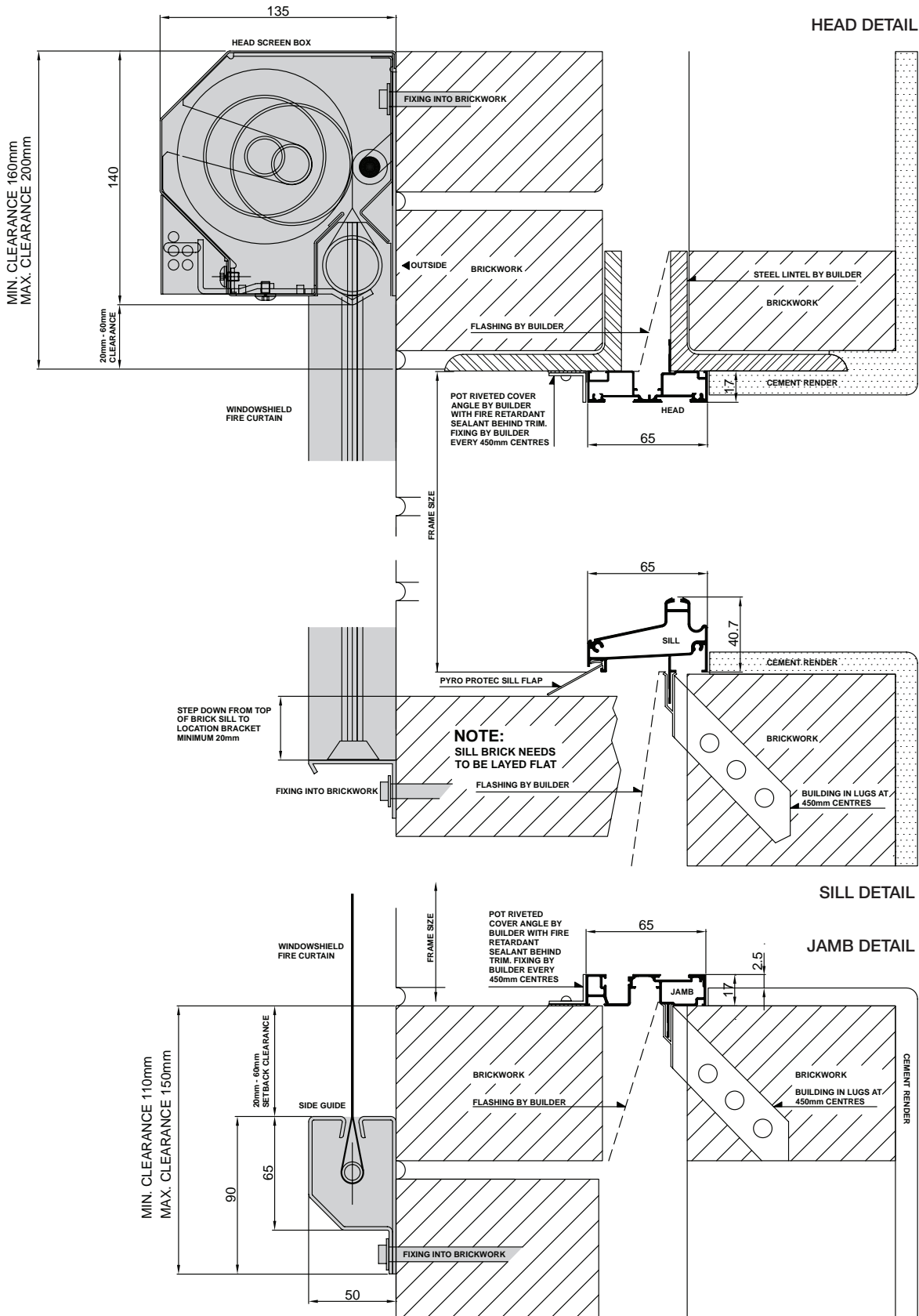
Please note that drawings are not to scale

Xtreme® Flame Zone | Mk 1 | 25 Feb 2010

Confidentiality Notice: This document and the information it contains are copyright and confidential to Trend® Windows & Doors Pty Limited. Disclosure, use and copying in any form whatsoever, except as authorised by Trend® Windows & Doors in writing, are strictly prohibited. Patents and Design Registrations pending.

Installation

Xtreme® Windows & Doors Flame Zone | **Xtreme® Sliding Window** | Double Brick

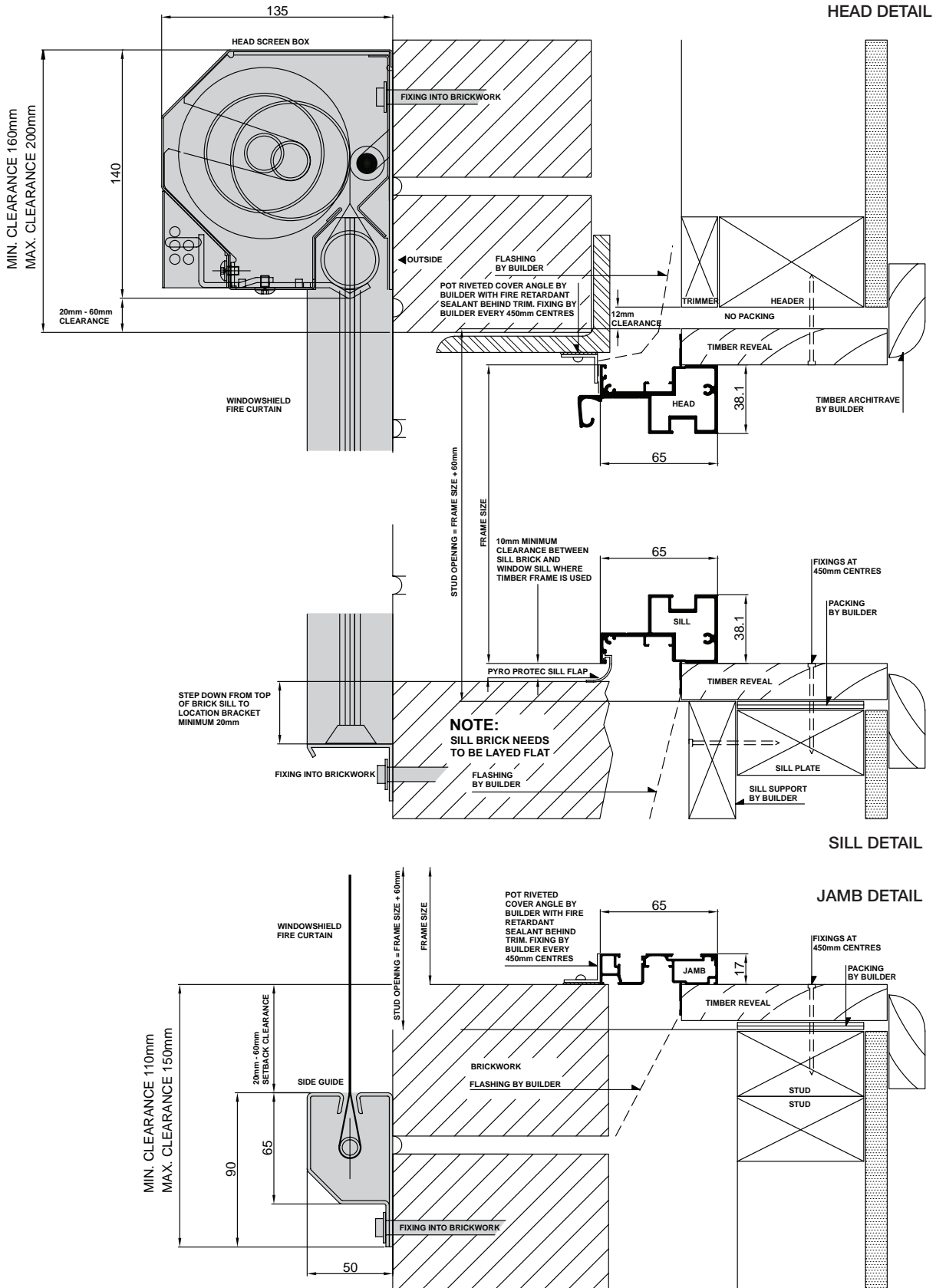


Please note that drawings are not to scale

Xtreme® Flame Zone | Mk 1 | 25 Feb 2010

Installation

Xtreme® Windows & Doors Flame Zone | Xtreme® Awning Windows | Brick Veneer



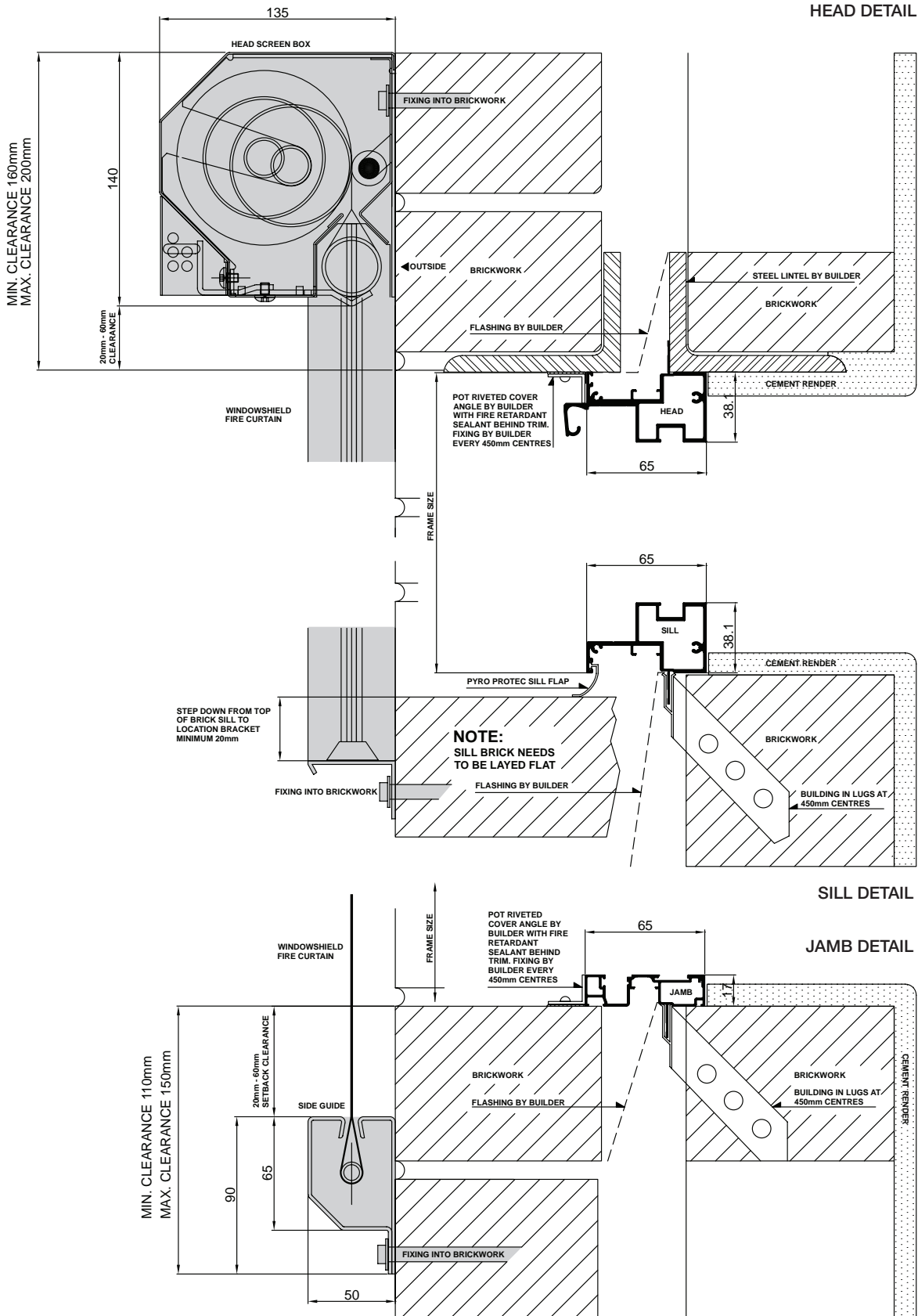
Please note that drawings are not to scale

Xtreme® Flame Zone | Mk 1 | 25 Feb 2010

Confidentiality Notice: This document and the information it contains are copyright and confidential to Trend® Windows & Doors Pty Limited. Disclosure, use and copying in any form whatsoever, except as authorised by Trend® Windows & Doors in writing, are strictly prohibited. Patents and Design Registrations pending.

Installation

Xtreme® Windows & Doors Flame Zone | Xtreme® Awning Windows | Double Brick



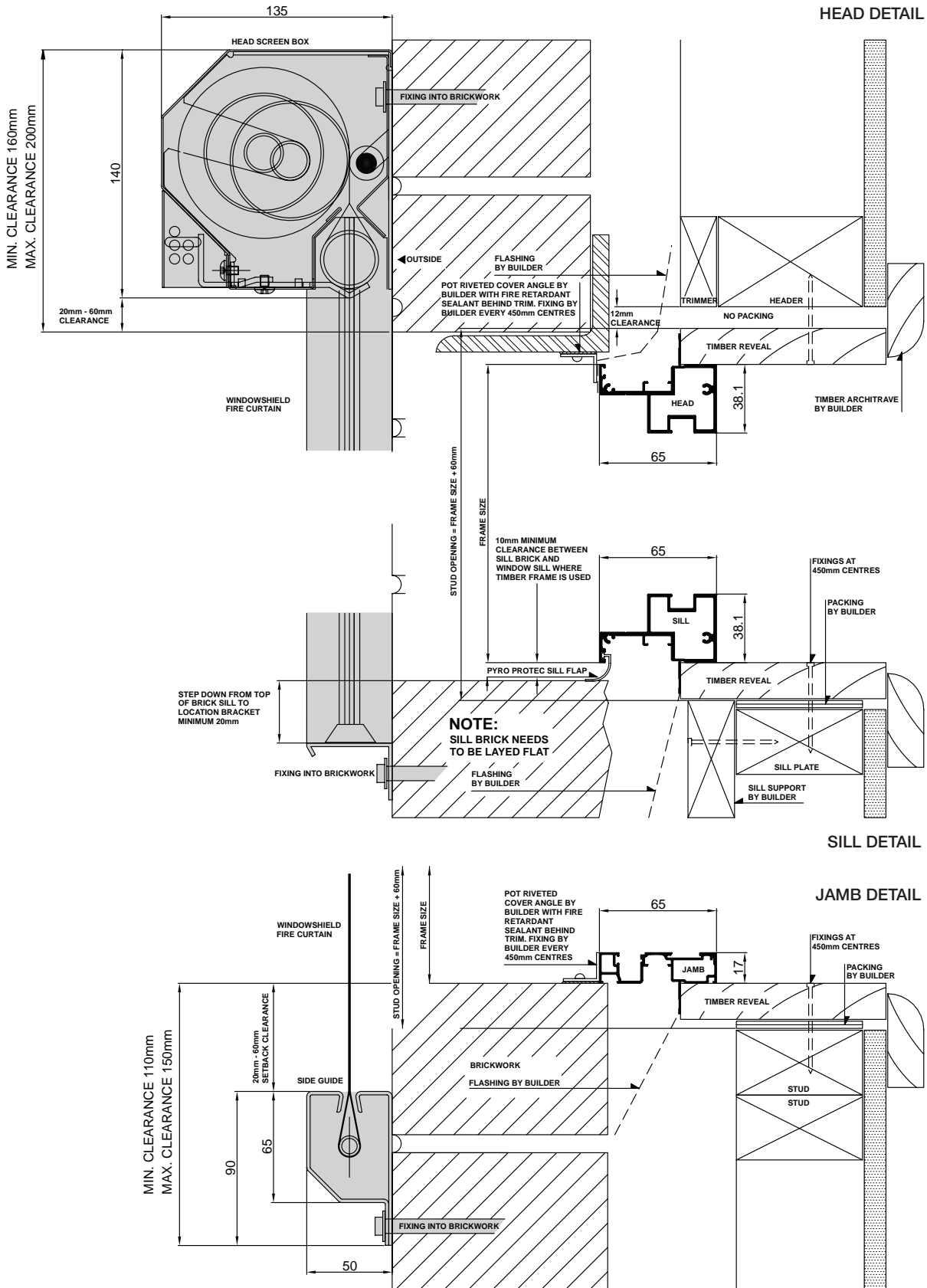
Please note that drawings are not to scale

Xtreme® Flame Zone | Mk 1 | 25 Feb 2010

Confidentiality Notice: This document and the information it contains are copyright and confidential to Trend® Windows & Doors Pty Limited. Disclosure, use and copying in any form whatsoever, except as authorised by Trend® Windows & Doors in writing, are strictly prohibited. Patents and Design Registrations pending.

Installation

Xtreme® Windows & Doors Flame Zone | Xtreme® Casement Windows | Brick Veneer



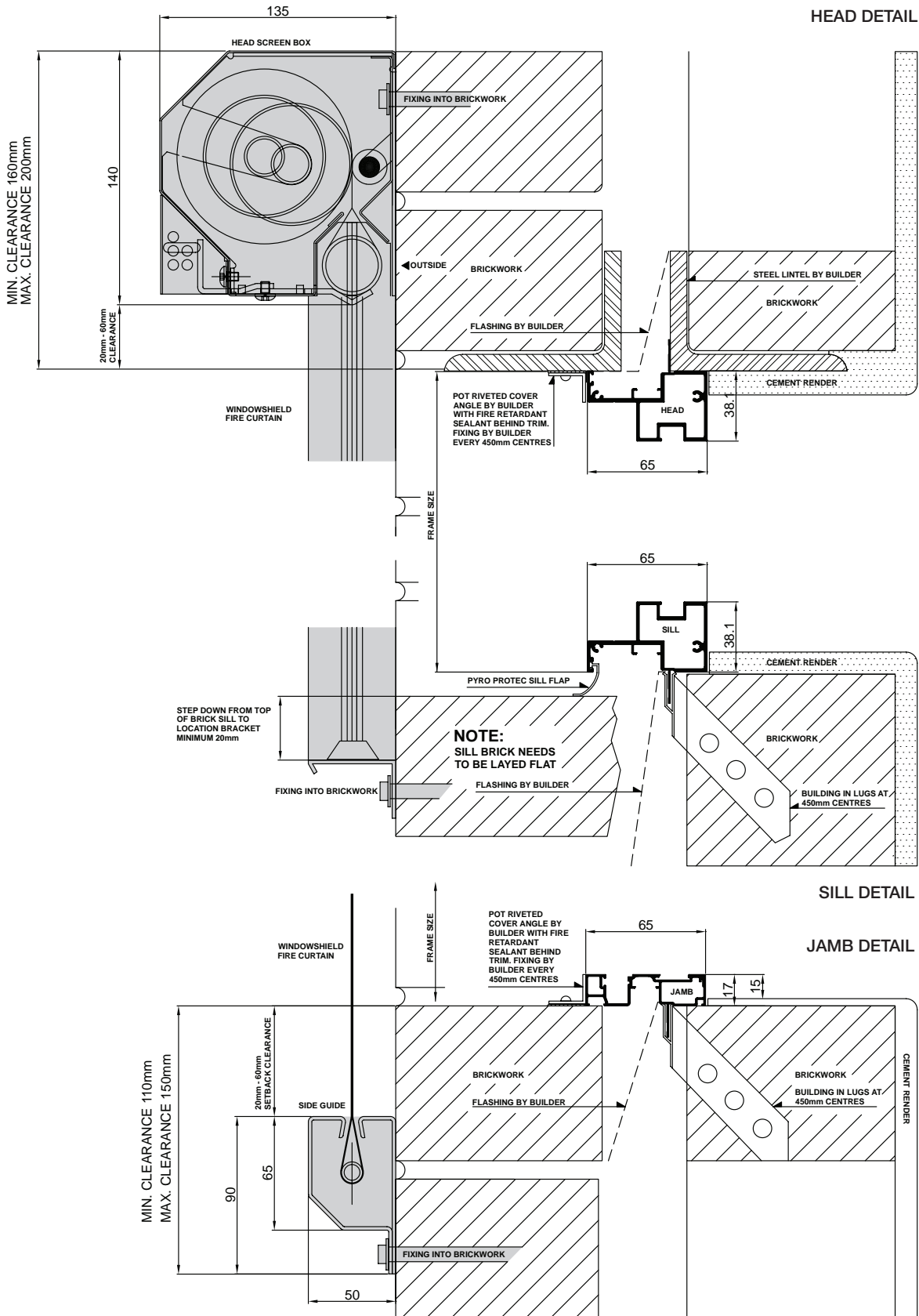
Please note that drawings are not to scale

Xtreme® Flame Zone | Mk 1 | 25 Feb 2010

Confidentiality Notice: This document and the information it contains are copyright and confidential to Trend® Windows & Doors Pty Limited. Disclosure, use and copying in any form whatsoever, except as authorised by Trend® Windows & Doors in writing, are strictly prohibited. Patents and Design Registrations pending.

Installation

Xtreme® Windows & Doors Flame Zone | Xtreme® Casement Windows | Double Brick



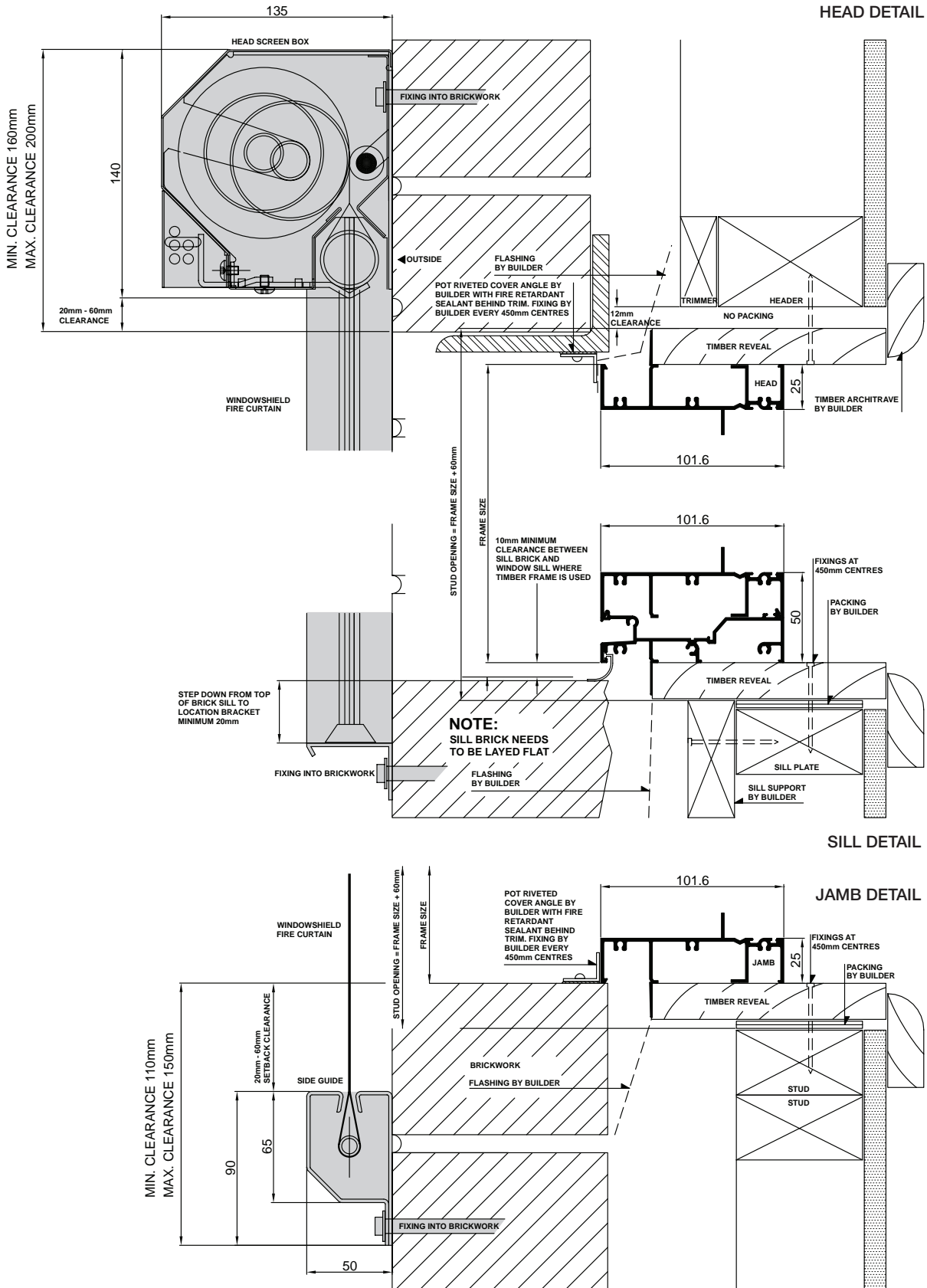
Please note that drawings are not to scale

Xtreme® Flame Zone | Mk 1 | 25 Feb 2010

Confidentiality Notice: This document and the information it contains are copyright and confidential to Trend® Windows & Doors Pty Limited. Disclosure, use and copying in any form whatsoever, except as authorised by Trend® Windows & Doors in writing, are strictly prohibited. Patents and Design Registrations pending.

Installation

Xtreme® Windows & Doors Flame Zone | **Crestlite Internal Offset** | Brick Veneer



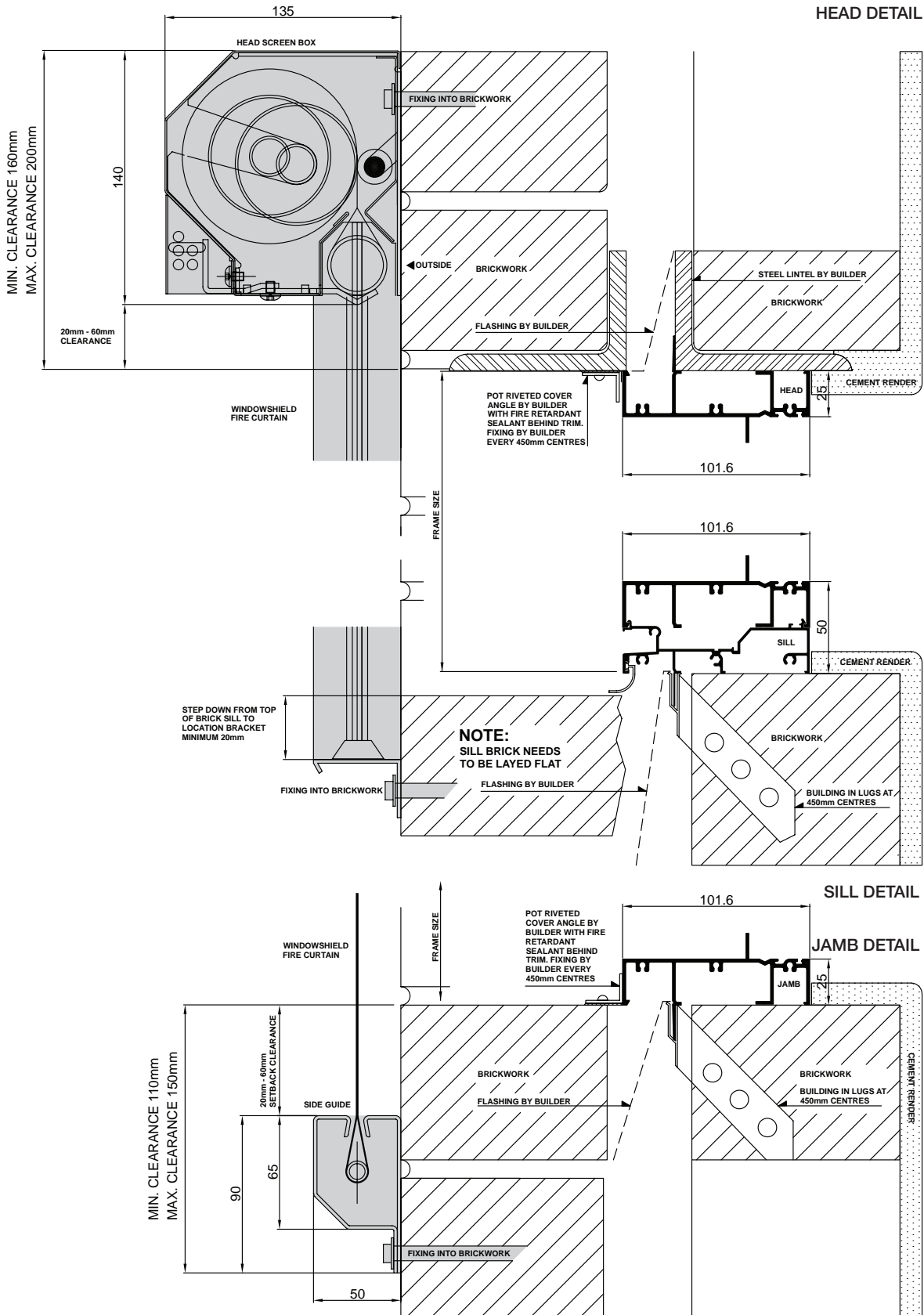
Please note that drawings are not to scale

Xtreme® Flame Zone | Mk 1 | 25 Feb 2010

Confidentiality Notice: This document and the information it contains are copyright and confidential to Trend® Windows & Doors Pty Limited. Disclosure, use and copying in any form whatsoever, except as authorised by Trend® Windows & Doors in writing, are strictly prohibited. Patents and Design Registrations pending.

Installation

Xtreme® Windows & Doors Flame Zone | **Crestlite Internal Offset** | Double Brick

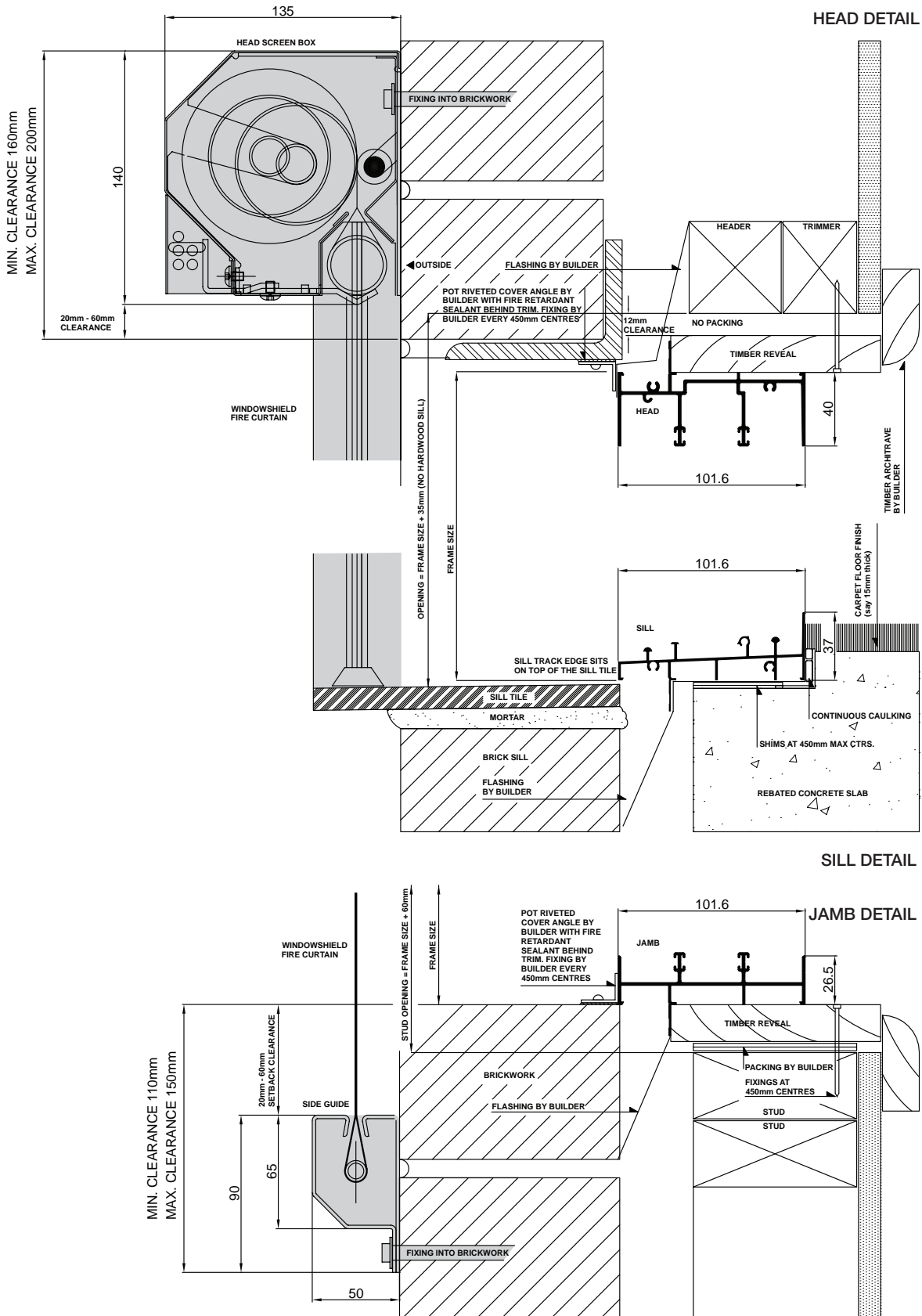


Please note that drawings are not to scale

Xtreme® Flame Zone | Mk 1 | 25 Feb 2010

Installation

Xtreme® Windows & Doors Flame Zone | Xtreme® Sliding Door | Brick Veneer



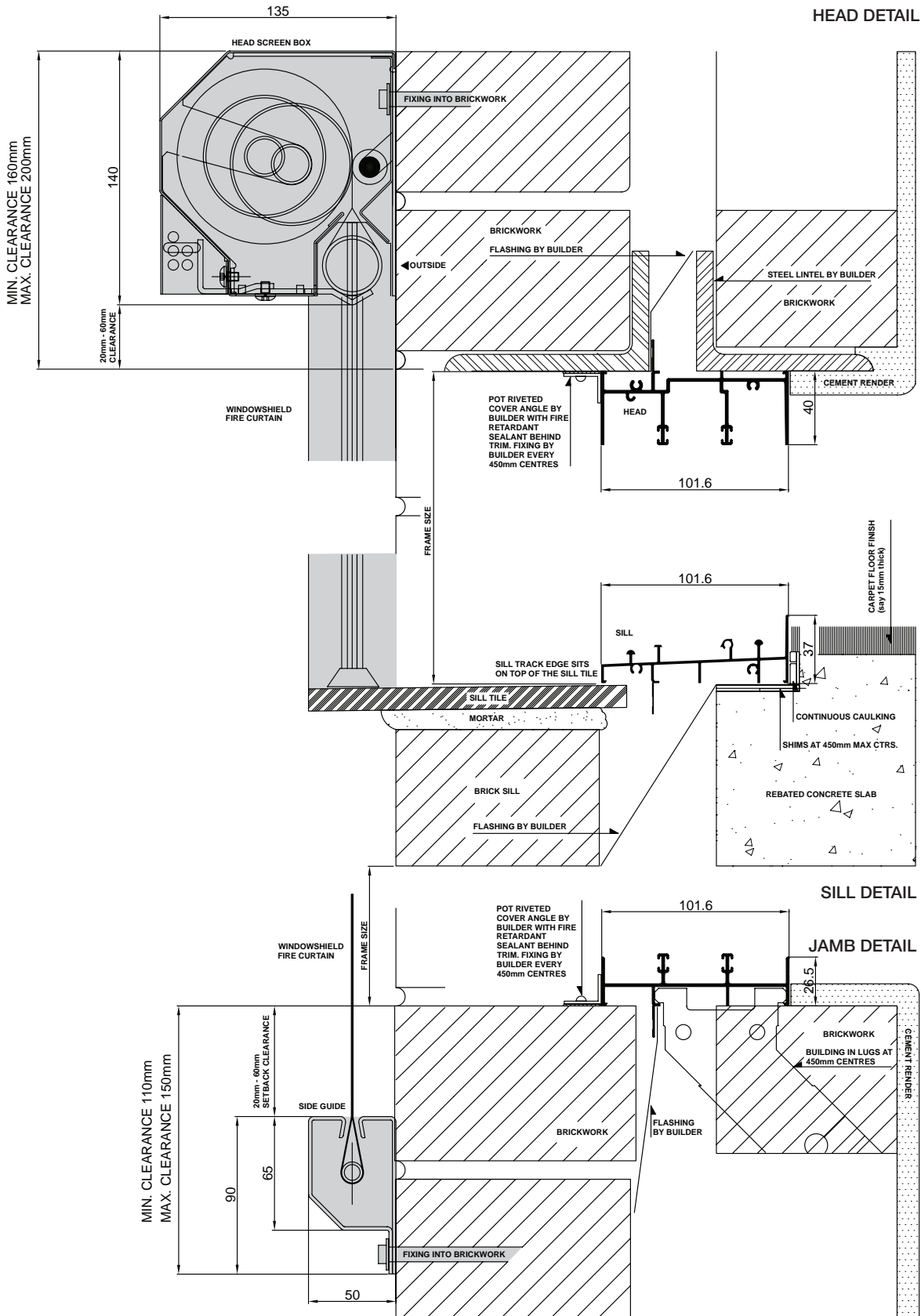
Please note that drawings are not to scale

Xtreme® Flame Zone | Mk 1 | 25 Feb 2010

Confidentiality Notice: This document and the information it contains are copyright and confidential to Trend® Windows & Doors Pty Limited. Disclosure, use and copying in any form whatsoever, except as authorised by Trend® Windows & Doors in writing, are strictly prohibited. Patents and Design Registrations pending.

Installation

Xtreme® Windows & Doors Flame Zone | **Xtreme® Sliding Door** | Double Brick



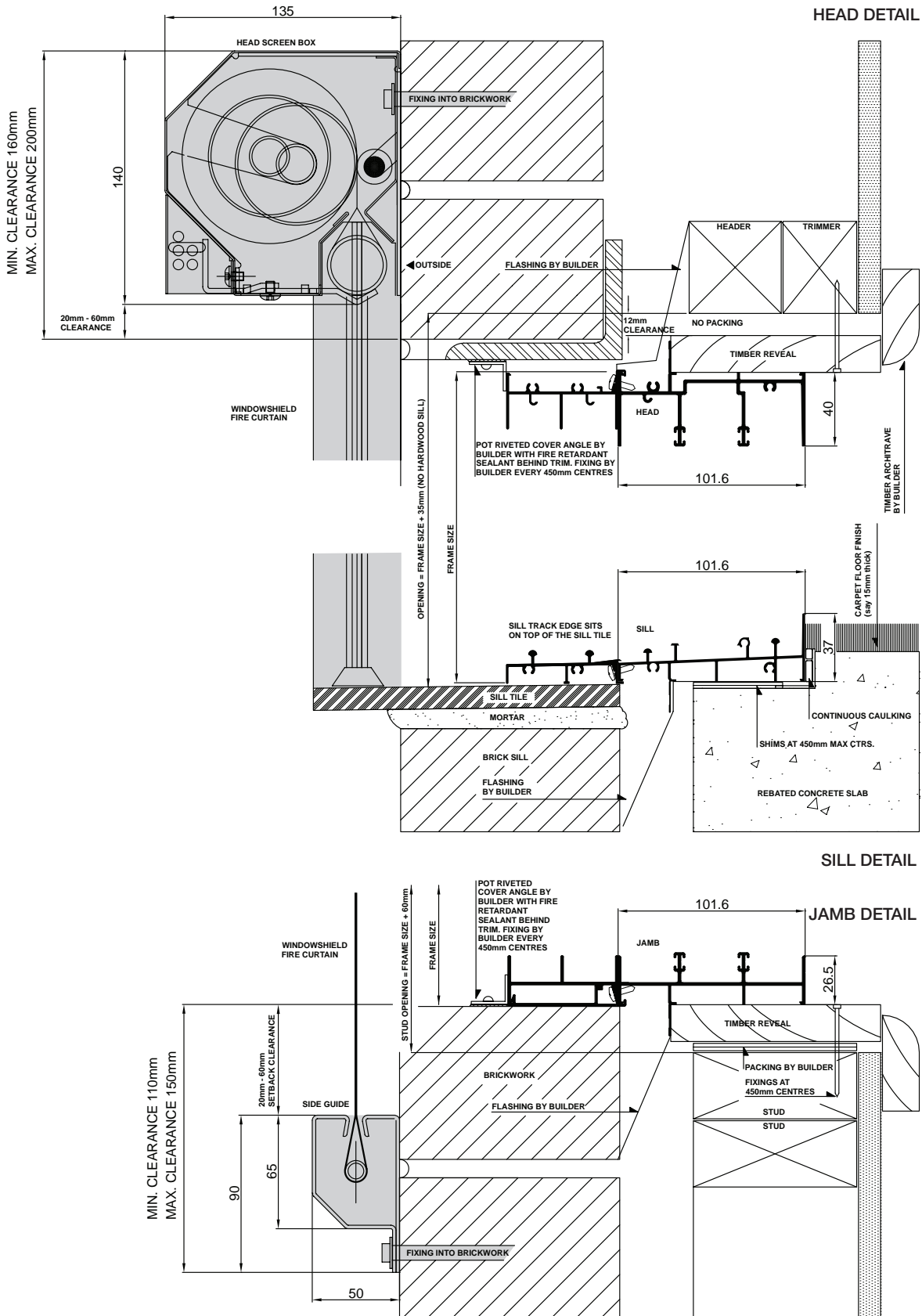
Please note that drawings are not to scale

Xtreme® Flame Zone | Mk 1 | 25 Feb 2010

Confidentiality Notice: This document and the information it contains are copyright and confidential to Trend® Windows & Doors Pty Limited. Disclosure, use and copying in any form whatsoever, except as authorised by Trend® Windows & Doors in writing, are strictly prohibited. Patents and Design Registrations pending.

Installation

Xtreme® Windows & Doors Flame Zone | Xtreme® Stacker Door | Brick Veneer



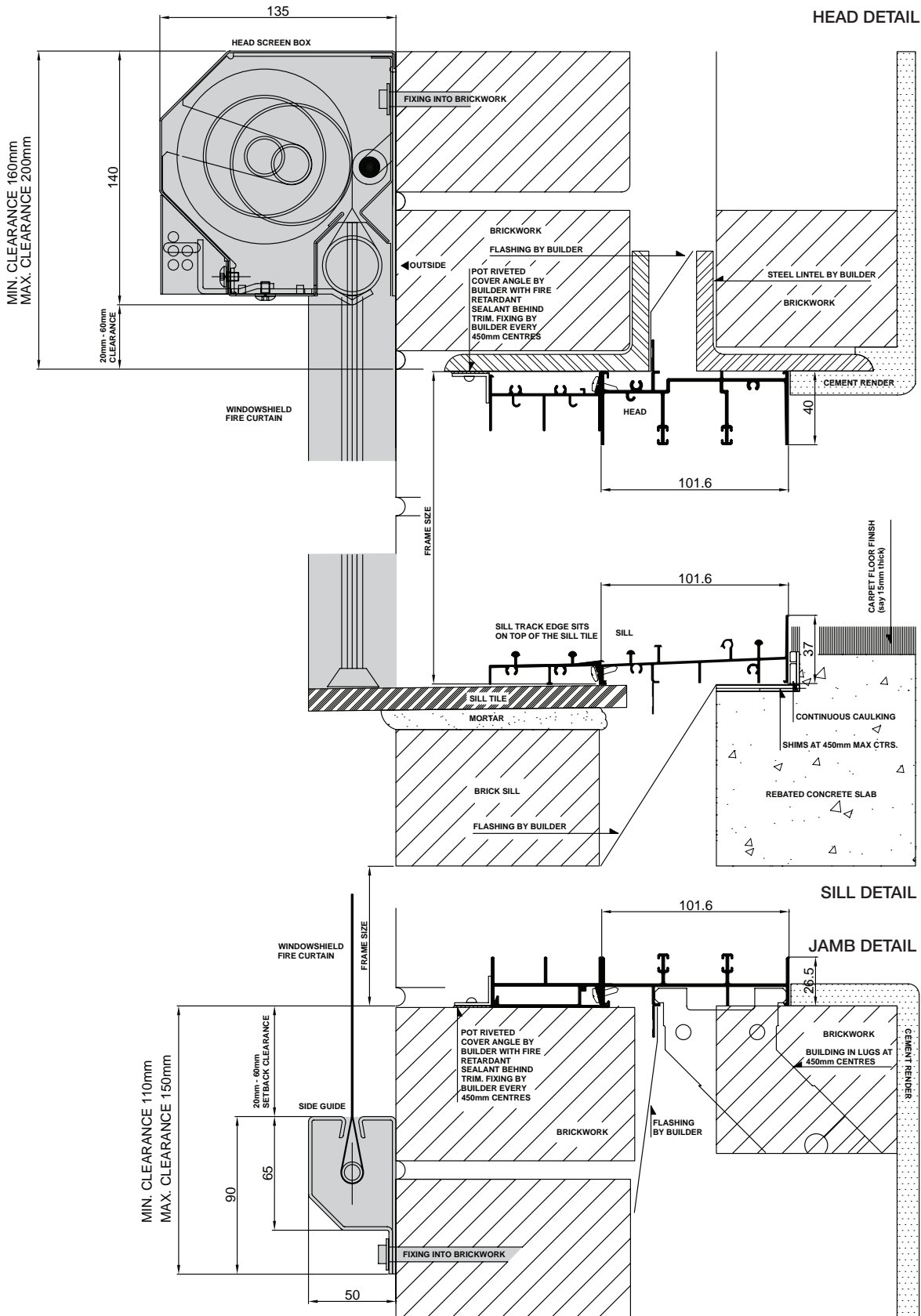
Please note that drawings are not to scale

Xtreme® Flame Zone | Mk 1 | 25 Feb 2010

Confidentiality Notice: This document and the information it contains are copyright and confidential to Trend® Windows & Doors Pty Limited. Disclosure, use and copying in any form whatsoever, except as authorised by Trend® Windows & Doors in writing, are strictly prohibited. Patents and Design Registrations pending.

Installation

Xtreme® Windows & Doors Flame Zone | Xtreme® Stacker Door | Double Brick

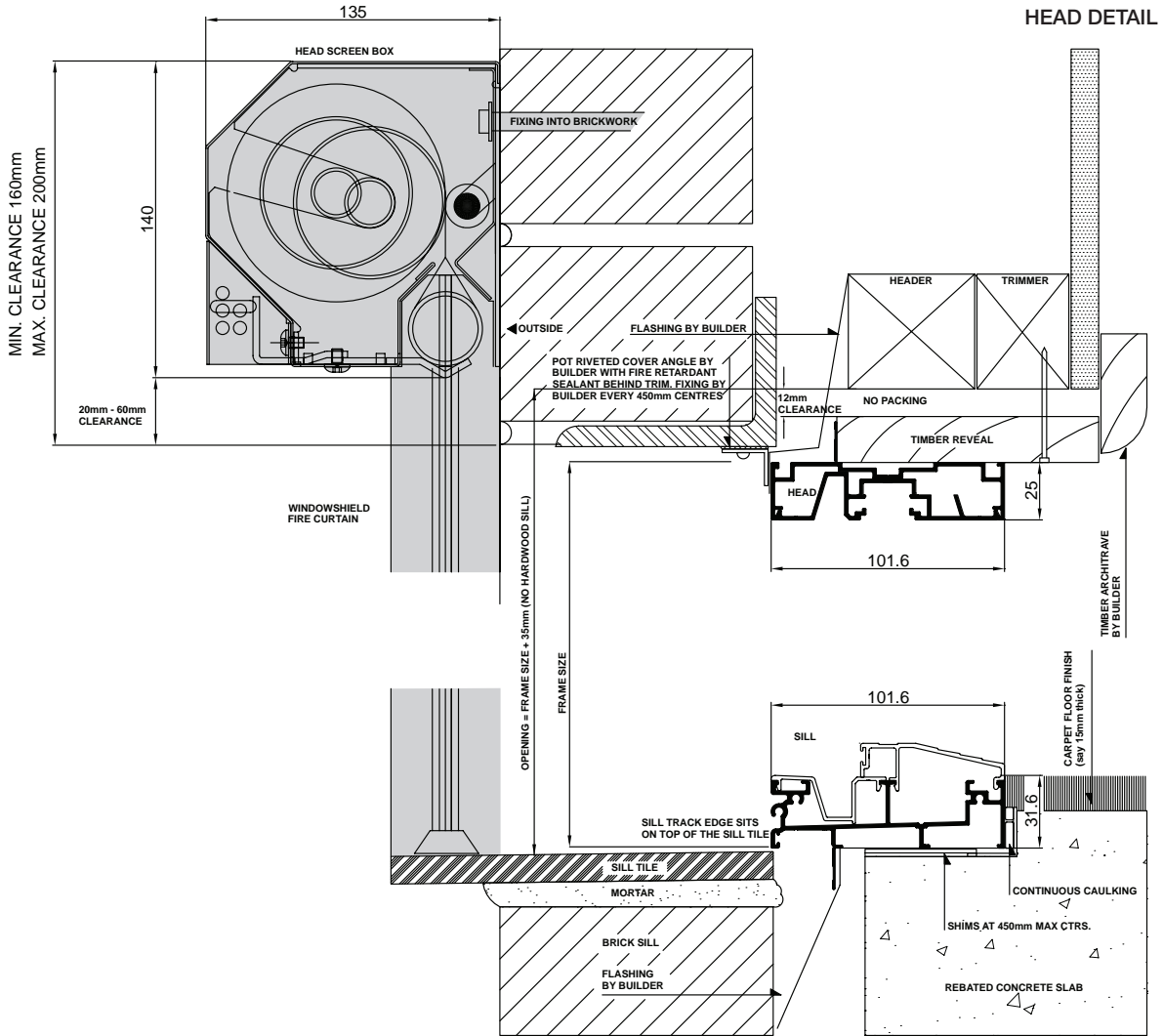


Please note that drawings are not to scale

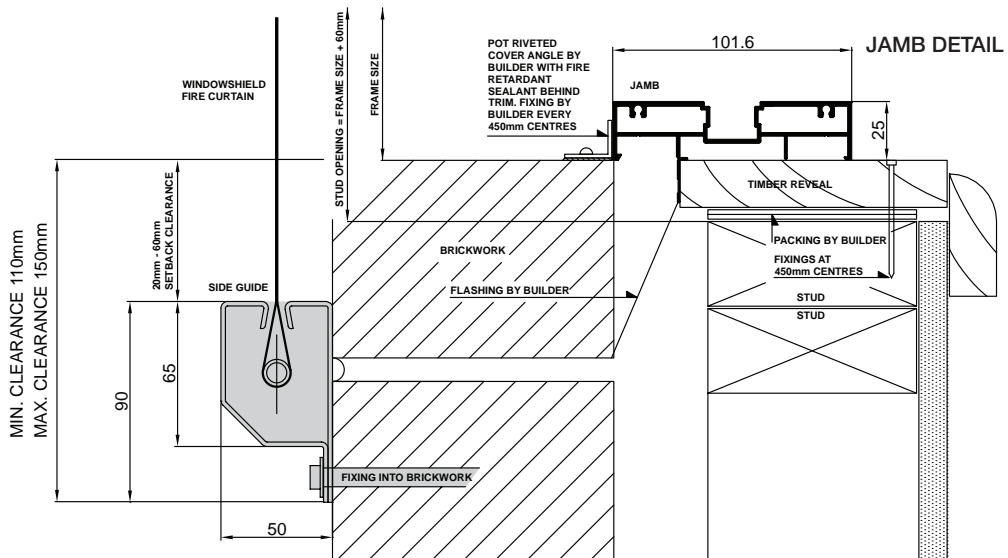
Xtreme® Flame Zone | Mk 1 | 25 Feb 2010

Installation

Xtreme® Windows & Doors Flame Zone | Xtreme® Provincial Door | Brick Veneer



SILL DETAIL



JAMB DETAIL

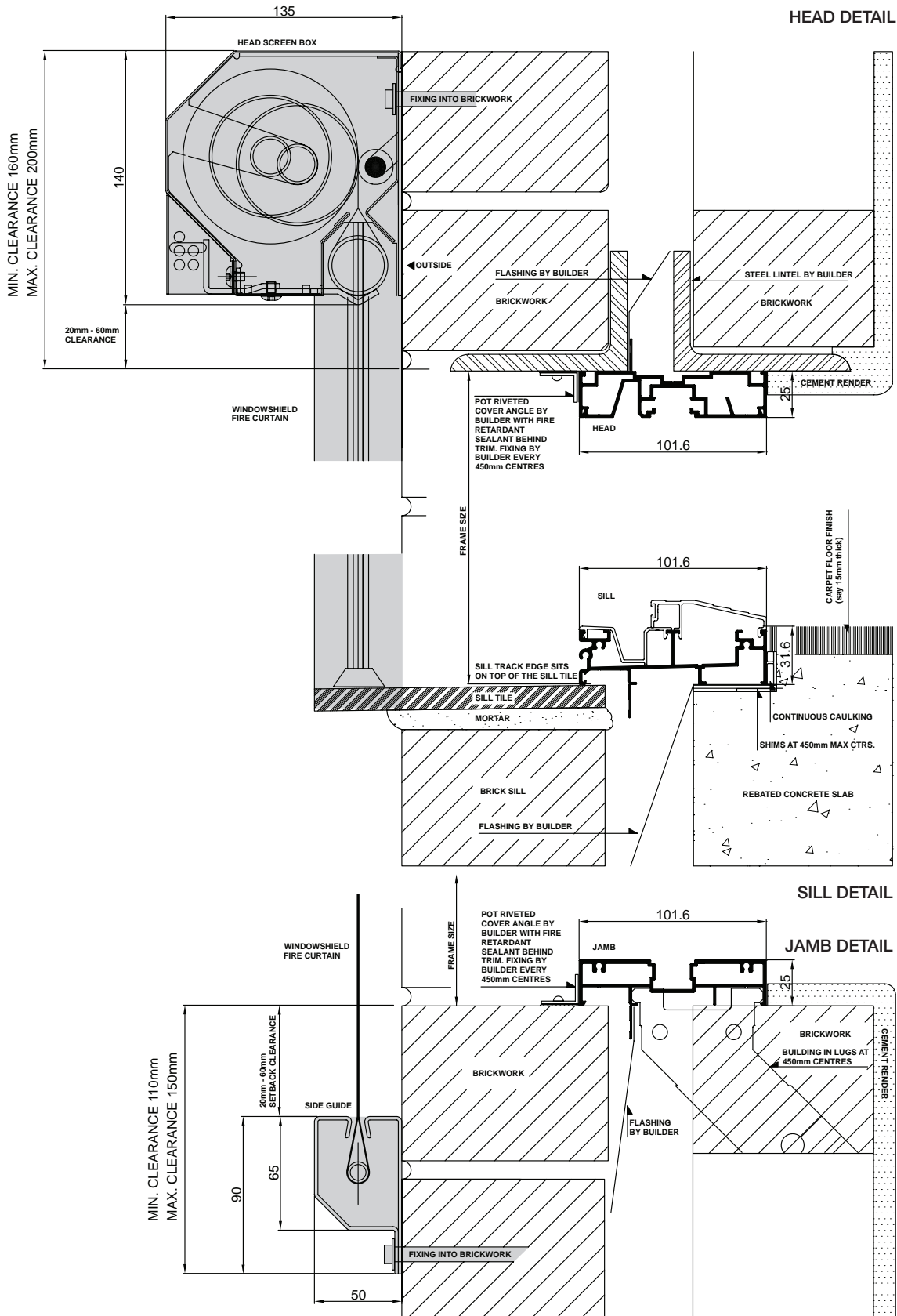
Please note that drawings are not to scale

Xtreme® Flame Zone | Mk 1 | 25 Feb 2010

Confidentiality Notice: This document and the information it contains are copyright and confidential to Trend® Windows & Doors Pty Limited. Disclosure, use and copying in any form whatsoever, except as authorised by Trend® Windows & Doors in writing, are strictly prohibited. Patents and Design Registrations pending.

Installation

Xtreme® Windows & Doors Flame Zone | Xtreme® Provincial Door | Double Brick

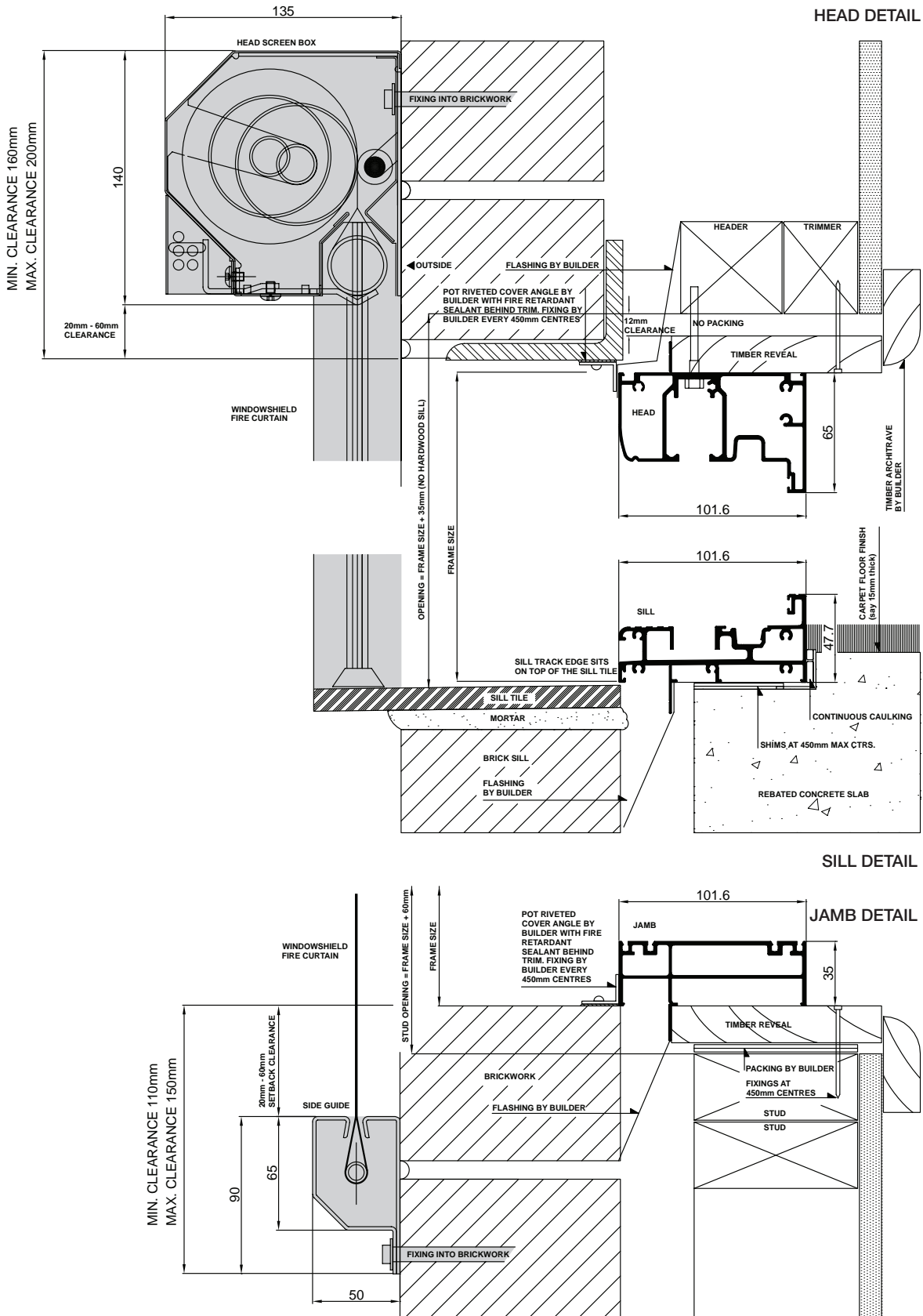


Please note that drawings are not to scale

Xtreme® Flame Zone | Mk 1 | 25 Feb 2010

Installation

Xtreme® Windows & Doors Flame Zone | Xtreme® Bifold Doors | Brick Veneer



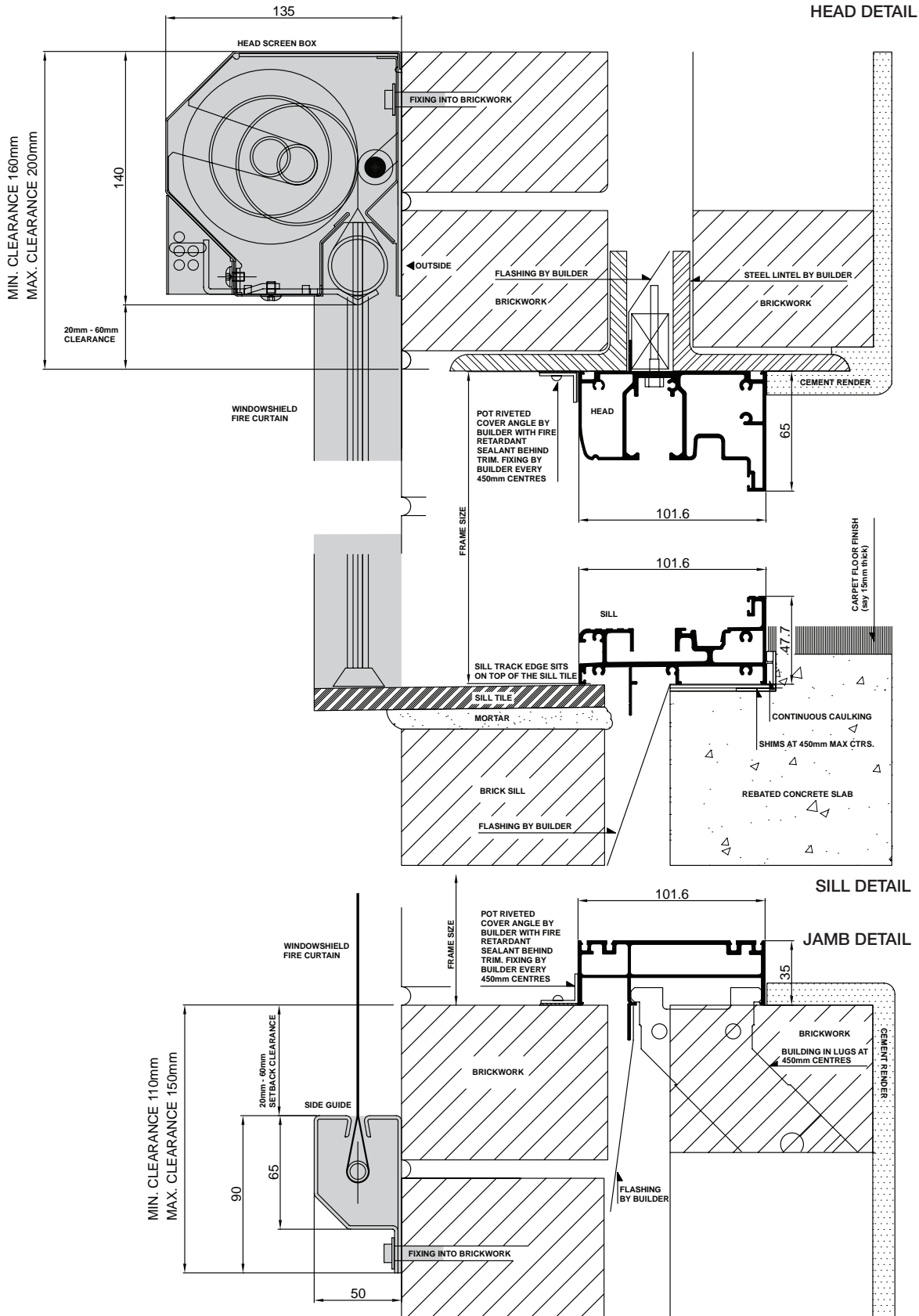
Please note that drawings are not to scale

Xtreme® Flame Zone | Mk 1 | 25 Feb 2010

Confidentiality Notice: This document and the information it contains are copyright and confidential to Trend® Windows & Doors Pty Limited. Disclosure, use and copying in any form whatsoever, except as authorised by Trend® Windows & Doors in writing, are strictly prohibited. Patents and Design Registrations pending.

Installation

Xtreme® Windows & Doors Flame Zone | Xtreme® Bifold Doors | Double Brick



Please note that drawings are not to scale

Xtreme® Flame Zone | Mk 1 | 25 Feb 2010