

Laminex®

AQUAPANEL®

- **EASY CLEAN** *grout free*
- **VIBRANT** *contemporary patterns*
- **TEXTURED**, *profiled surfaces*
- **EASY** *installation*

AQUAPANEL® colour palette



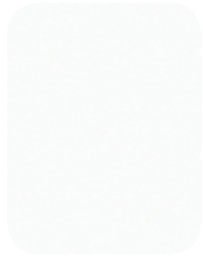
LEGEND

1 Polar White	2 White Glaze	3 Ice Mist	4 Off White	5 Champagne
6 Pewter	7 Natural	8 Peruvian Clay	9 Fossil	10 Espresso
11 Black	12 Silver Grey PVC	13 New Antique White PVC	14 Black PVC	15 White PVC

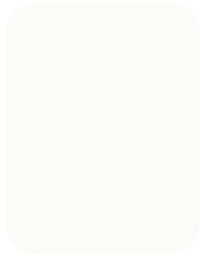
LAMINEX® AQUAPANEL® *fixing systems*

Five fixing system profiles have been developed by Laminex to stylishly integrate joins and minimise areas where mould and grime could gather. And because each profile is available in a selection of colours you'll find the perfect match for your choice of surface. The legend on the left page nominates the recommended fixing system colour to use with each **AQUAPANEL®** colour.

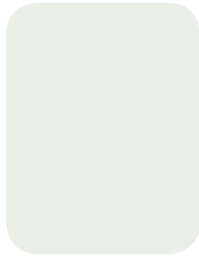
ALUMINIUM



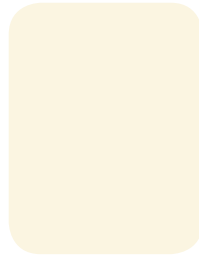
1. Polar White



2. White Glaze



3. Ice Mist



4. Off White



5. Champagne



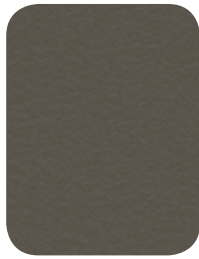
6. Pewter



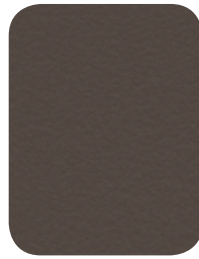
7. Natural



8. Peruvian Clay



9. Fossil



10. Espresso

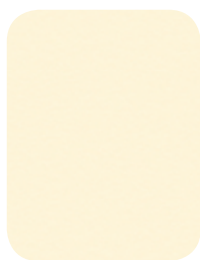


11. Black

PVC



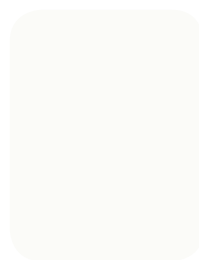
12. Silver Grey



13. New Antique White



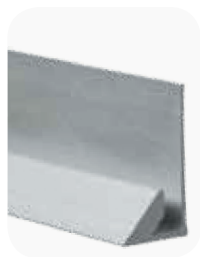
14. Black



15. White



Divisional



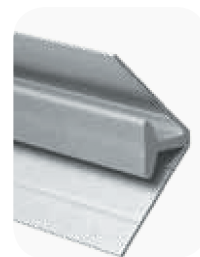
Base



Capping



External



Internal

AQUAPANEL® *sheet sizes*

The following outlines the sheet sizes available for each colour option.

		Sheet sizes			
Colour	Finish	1800x900mm	2400x900mm	2400x1200mm	3000x1200mm
Ash White	Glaze	■	■	■	
Ash White	Tile			■	■
Black	Ripple			■	■
Eggshell	Tile			■	■
Espresso	Tile			■	■
Fossil	Tile			■	■
French Wash	Glaze	■	■	■	
Limestone	Gloss	■	■	■	
Moleskin	Glaze	■	■	■	
New Antique White	Glaze	■	■	■	
New Graphite	Glaze	■	■	■	
Paper Bark	Tile			■	■
Parchment	Glaze	■	■	■	
Pearl Grey	Glaze	■	■	■	
Peruvian Clay	Tile			■	■
Platinum Lustre	Ripple			■	■
Polar White	Gloss	■	■	■	
Polar White	Ripple			■	■
Polar White	Tile			■	■
Silver Grey	Glaze	■	■	■	
Silver Lustre	Ripple			■	■
Stellar Illumina	Ripple			■	■
Stone Wash	Glaze	■	■	■	
Verde Wash	Glaze	■	■	■	
White	Glaze	■	■	■	
White	Gloss	■	■	■	
White	Tile			■	■
White Valencia	Glaze	■	■	■	
Zinc Lustre	Ripple			■	■
Zincworks	Glaze	■	■	■	

Please check with your local branch for sheet size availability.

Please note that some colour options were previously included in the Laminex Vizage Vertical Surfaces range.

ALTERNATIVE SHEET SIZES are also available for some decors as a made-to-order (MTO).

LAMINEX® WALL *system silicones*

Available in a range of complementary colours. Please check with your local branch for availability.

For more **INFORMATION** contact your sales representative or customer service on **132 136**.

Whether you want to create a simple backdrop or make a statement, **LAMINEX® AQUAPANEL®** can create the desired look. Laminex Aquapanel is a wall surfacing solution that is aesthetically pleasing and immensely practical with **ENDLESS APPLICATIONS**. Laminex Aquapanel is also the ideal home renovator's wall surfacing material. Economical and durable, it exceeds all the requirements for wet area wall surfaces, such as shower recesses and laundry walls. Because it is non-porous and grout free, it is **EASY to CLEAN** with general cleaning regimes in both **DOMESTIC and COMMERCIAL** environments. Laminex Aquapanel is available in a large selection of contemporary colours and finishes with colour coordinated fixing systems and silicones. And the Laminex **7 YEAR limited warranty*** means you can have the confidence that the effect you create will be a lasting one. For installation instructions and technical information, refer to the installation guide and DVD. Call 1800 002 204 or visit laminex.com.au to obtain a free copy.



*Please obtain a copy of the Laminex Aquapanel 7 year limited warranty from The Laminex Group or an approved supplier.



When finalising colour selections, please use actual **LAMINEX® AQUAPANEL®** sample chips rather than printed examples. These are far more accurate and are also useful when making decisions on surface finishes and wall colours.

For a free sample chip call **1800 002 204**. For more information visit laminex.com.au or call **132 136**.

LAMINEX® AQUAPANEL® is marketed, distributed and manufactured by The Laminex Group. A division of Laminex Group Pty Limited ABN 98 004 093 092. The colours of the photographs depicted in the brochure are as close to the **LAMINEX AQUAPANEL** range as photographic lighting and modern printing processes allow. Dark colours and gloss finishes require more care and maintenance than light-coloured and lower-gloss surfaces. The Laminex Group recommends the use of laminate cleaning products or mild household cleaning products for dark colours and gloss finishes, please visit laminex.com.au for specific care and cleaning information. Please note in certain lights or from different angles wipe down marks may be visible. **LAMINEX AQUAPANEL** is no different than any other material in that darker colours will always show scratches and superficial wear and tear more readily than lighter colours. **LAMINEX AQUAPANEL** should be protected from strong direct sunlight as continuous exposure may cause discolouration or fading to the surface over time. *Please obtain a copy of the terms and conditions of the **LAMINEX AQUAPANEL** 7 year limited warranty from The Laminex Group or visit laminex.com.au. This warranty is in addition to any rights that may exist under the Trade Practices Act. **Laminex®, Aquapanel®**

Laminex®
Inspire your space