

PN25 CSP



PN25 PSF



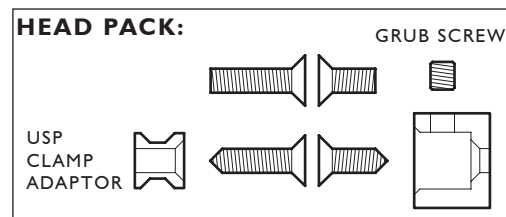
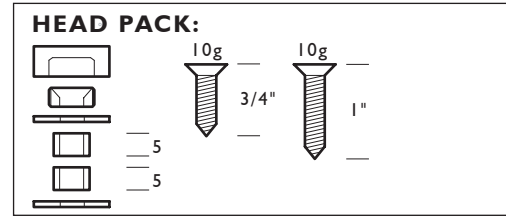
PN32 STD HEAD / 25MM BODY / 50MM BODY



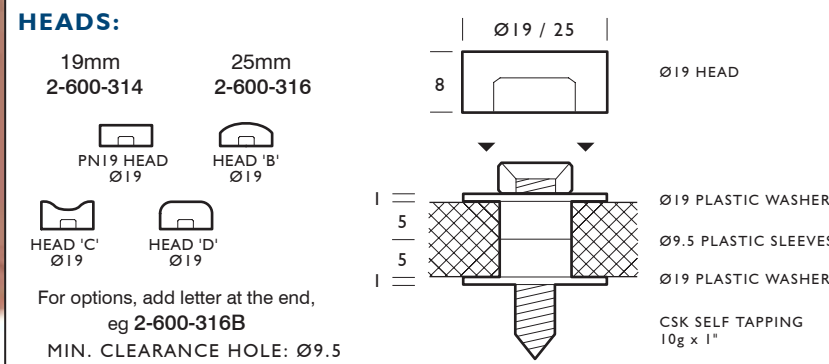
PN32 TRI PLUS



INTERIOR USE - 303 GRADE STAINLESS STEEL

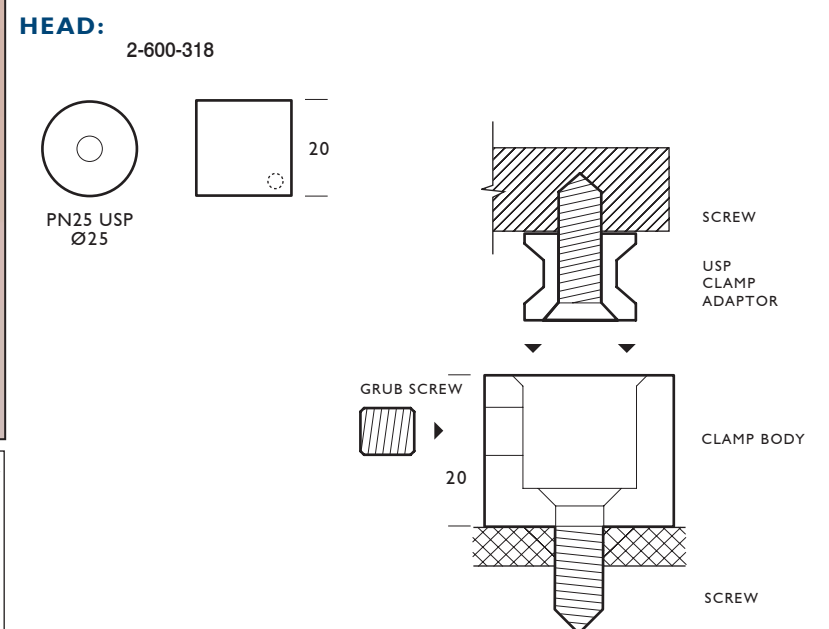


PN19 & 25 PSF - PANEL SCREW FIXING



HEADS:
 19mm 2-600-314
 25mm 2-600-316
 PN19 HEAD Ø19
 HEAD 'B' Ø19
 HEAD 'C' Ø19
 HEAD 'D' Ø19
 For options, add letter at the end, eg 2-600-316B
 MIN. CLEARANCE HOLE: Ø9.5

PN25 USP - UNSEEN PIN



HEAD: 2-600-318
 PN25 USP Ø25

TOOLS



Australian Capital Territory Canberra (02) 6297 3844 New South Wales Sydney (02) 8784 4422 Coffs Harbour (02) 6651 2488 Gosford (02) 4389 2800 Newcastle (02) 4953 6666 Northern Territory Darwin (08) 8947 4789	Queensland Brisbane (07) 3244 3222 Bundaberg (07) 4151 1171 Cairns (07) 4035 2316 Gold Coast (07) 5596 3855 Mackay (07) 4952 3737 Rockhampton (07) 4928 0000 Sunshine Coast (07) 5493 8188 Toowoomba (07) 4634 3733 Townsville (07) 4779 0717	South Australia Adelaide (08) 8381 0888 Victoria Melbourne (03) 9722 5422 Wodonga (02) 6024 3344 Bendigo (03) 5444 4594 Geelong (03) 5277 3388 Gippsland (03) 5133 6111	Western Australia Perth (08) 9347 3888 Tasmania Launceston (03) 6326 5981 New Zealand Auckland +64 9 476 4445
---	---	--	---



Best Service. Best Value. Best Advice.
 www.lincolnsentry.com.au



PIN SYSTEM
 ARCHITECTURAL HARDWARE FITTINGS



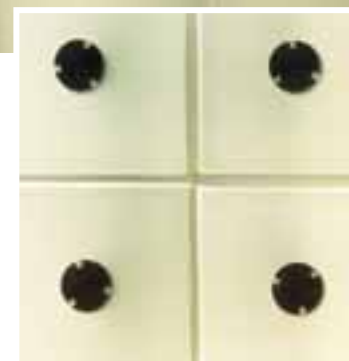
Best Service. Best Value. Best Advice.



PN25 STD HEAD / 30MM BODY / BODY WASH



PN25 TRI



PN19 OPTION C HEAD



PN32 STD HEAD



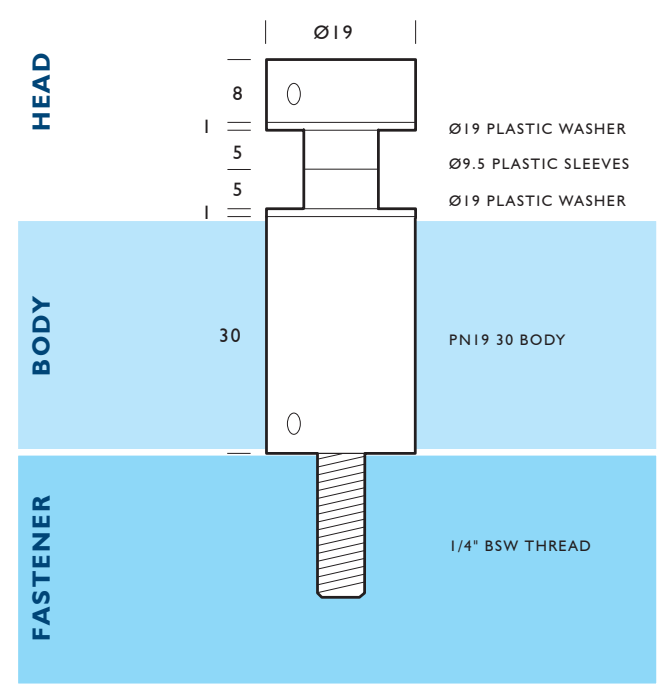
PIN SYSTEM

The Pin System is an elegant and clean alternative to your fixing requirements. Incorporated into any design, pins can be transformed into design features. Made from 303 stainless steel (interior use) or 316 stainless steel (exterior use) they are suitable for a range of architectural applications. The modular construction and availability makes the Pin System easy to specify for a diverse range of applications.

...as easy as 1. 2. 3.

Select the combination of **Head, Body and Fasteners** that match together from the shaded areas to create an assembly that meets your specific project requirements. It is now as easy as...

1. Select the **Head Size and Type**
(Head pack will be supplied with washer, spacer and stud)
2. Select the **Body Size**
3. Select the **Stud and Fastener Type** to suit your application



Please note the stainless steel grade and hole clearance required for each head option. Tools for tightening the pin assemblies are also available (see back page).

PN19, 25 and 32 are all available in BACK to BACK (BTB) Packs. Specify head size required, head option and length of stud fastener.

PRODUCT COMPLIANCY:
This Pin System is not manufactured by Certified Engineers. It is the buyer's responsibility to ensure that the application of all PIN products are suitable for their intended use and are compliant with all relevant standards.



PN12	PN19	PN25	PN25 TRI	PN25 TRI PLUS	PN25 CSP
HEAD: 2-600-105	HEADS: 2-600-110	HEADS: 2-600-112	HEAD: 2-600-116	HEAD: 2-600-118	HEAD: 2-600-114
MIN. CLEARANCE HOLE: Ø7	MIN. CLEARANCE HOLE: Ø10	MIN. CLEARANCE HOLE: Ø13	MIN. CLEARANCE HOLE: Ø13	MIN. CLEARANCE HOLE: Ø13	MIN. CLEARANCE HOLE: Ø16

INTERIOR USE - 303 GRADE STAINLESS STEEL (Suits 6, 8 and 10mm glass)		INTERIOR USE - 303 GRADE STAINLESS STEEL (Suits 6, 8 and 10mm glass)					
BODIES:	BODIES:	BODIES:	BODIES:	BODIES:	BODIES:	BODIES:	BODIES:
2-600-030 PN12 20 BODY	2-600-032 PN12 30 BODY	2-600-010 PN19 10 BODY	2-600-012 PN19 20 BODY	2-600-018 PN25 10 BODY	2-600-020 PN25 20 BODY	2-600-022 PN25 30 BODY	2-600-024 PN25 50 BODY
2-600-014 PN19 30 BODY	2-600-016 PN19 50 BODY						
OPTIONAL LOAD SPREADING BODY WASHER	OPTIONAL LOAD SPREADING BODY WASHER	NOTE: PN25 CSP ALSO AVAILABLE AS CSF, CSA, CSG OR CSB.					

FASTENERS: FASTENERS COME WITH COMPATIBLE 1/4" BSW STUD				1/4" WHITWORTH THREADED STUDS AVAILABLE:			
2-603-116	2-603-120	20mm 13mm	2-603-112 2-603-110	2-603-132	2-603-122	2-603-118	2-603-114
CUSTOM LENGTHS AVAILABLE							

PN32	PN32 TRI	PN32 TRI PLUS	PN50
HEADS: 2-600-200	HEAD: 2-600-210	HEADS: 2-600-218	HEAD: 2-600-219
MIN. CLEARANCE HOLE: Ø16	MIN. CLEARANCE HOLE: Ø20	MIN. CLEARANCE HOLE: Ø20	MIN. CLEARANCE HOLE: Ø16

EXTERIOR USE - 316 STAINLESS STEEL (Suits 10 and 12mm glass)					EXTERIOR USE - 316 STAINLESS STEEL (Suits 10 and 12mm glass)			
BODIES:	BODIES:	BODIES:	BODIES:	BODIES:	BODIES:	BODIES:	BODIES:	BODIES:
2-600-070 PN32 15 BODY	2-600-075 PN32 25 BODY	2-600-080 PN32 35 BODY	2-600-081 PN32 50 BODY	2-600-082 PN32 100 BODY	2-600-220 PN50 15 BODY	2-600-222 PN50 25 BODY	2-600-224 PN50 35 BODY	2-600-226 PN50 50 BODY
NOTE: PN32 CSP ALSO AVAILABLE AS CSF, CSDUO, CSG OR CSB. PN32 TRI PLUS CAN ALSO USE Ø50 BODIES								

FASTENERS: FASTENERS COME WITH COMPATIBLE M10 STUD				M10 THREADED STUDS AVAILABLE:			
25mm 13mm	2-603-128 2-603-126	2-603-124	2-603-130	2-603-125	2-202-720	2-202-702	2-603-032 2-603-034 2-603-036 2-600-038 2-603-040 2-603-042 2-603-044 2-603-048 2-603-052 2-603-056
CUSTOM LENGTHS AVAILABLE *PILOT = PILOT DRILL SIZE							

