

forbo

forbo

Furniture Linoleum

has been awarded with following design awards:



red dot



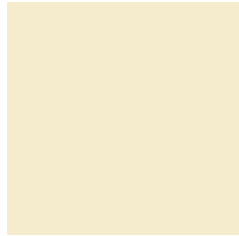
intelligent
material
and design
2003

www.forbo.com



Furniture Linoleum by Forbo

DESK TOP®
eleganza



4157



4151



4155



4132



4150



4158



4162



4140



4159



4160



4163



4146



4154



4161



4164



4023

DESK TOP®
metallica



M4140



M4155



M4154



M4023



S4151



S4150



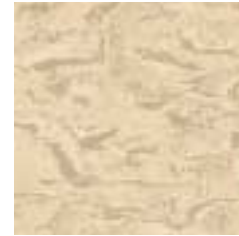
S4132



S4023

DESK TOP®
sabbato

ARTOLEUM®



5050



5051

MARMOLEUM®



3859



3863



3860



3866



3135



2939

In interior and furniture design the choice of the materials is of paramount importance when it comes to the appreciation and success of the product. Forbo offers interior and furniture designers an extensive range of contemporary linoleum products suitable for countless applications for decorative surfacing.

Furniture Linoleum

Made from natural raw materials, Furniture Linoleum is not only highly durable but also pleasing to the eye. And what's more, its unique tactile qualities make it a pleasure to touch. Furniture Linoleum is the aesthetic choice for today's discerning designer, satisfying the growing demand among design specialists everywhere for alternative materials that add an inherent quality and natural beauty to the finished product.

The following pages show why renowned designers, architects and furniture manufacturers can rely on Furniture Linoleum to bring added value to their interior and furniture designs.





BULO, Belgium

GUBI, Denmark



UNIFOR, Italy

DYES, Germany



LENSVELT, The Netherlands; design: Paolo Rizzatto, Italy



BERCO, USA



ALIAS, Italy; design: Paolo Rizzatto

GUBI, Denmark

Furniture Linoleum

contemporary yet classic





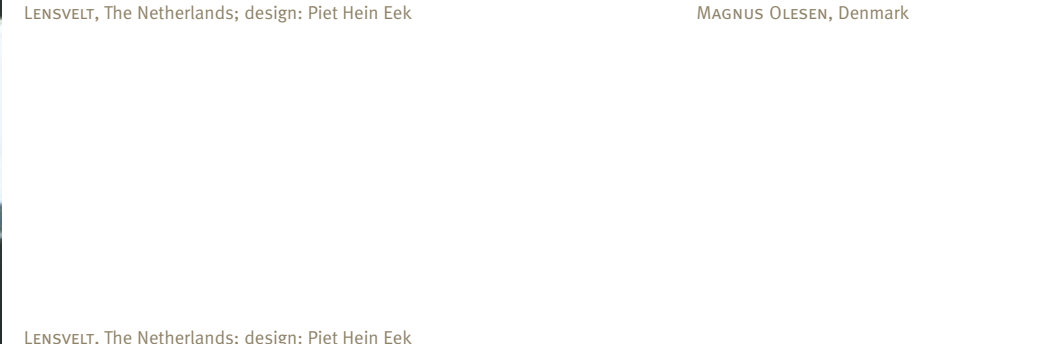
WILKHAHN, Germany



LENSVELT, The Netherlands; design: Piet Hein Eek



MAGNUS OLESEN, Denmark



LENSVELT, The Netherlands; design: Piet Hein Eek

10



E2, Denmark



11

Furniture Linoleum

natural character





HOLLEROD LIBRARY, Denmark; design: PO Inventar



HOUSE OF PARLIAMENT, Scotland

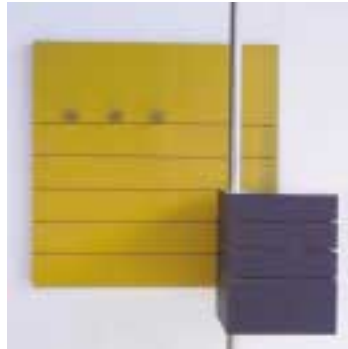


SKYTOWER "SKYCITY", New Zealand; architect: Craig Moller Auckland Ltd.



CHARLES STURT UNIVERSITY, Albury NSW, Australia architect: CSU office of Design

PERFORMA, Germany



PERFORMA, Germany



Forbo Flooring meeting room, The Netherlands



MAERSK, Denmark; design: PO Inventar



EXECUTIVE OFFICE

LATHAM LEGAL OFFICE, Belgium; architect: ???



EXECUTIVE OFFICE; manufacturer: Tischlerei Elbers, Germany



EXECUTIVE OFFICE; manufacturer: Tischlerei Elbers, Germany

Furniture linoleum

highlight or harmonise





MEN FASHION SHOP, The Netherlands; interior architect: Merx + Girod BV architecten



TACO BELL, USA



BURGER KING, USA



MARKS & SPENCER, UK

Furniture linoleum

a rewarding alternative



26



RUUD JAN KOKKE, Netherlands

Ycami, Italy



VITRA, Germany



27

ARTEK, Finland; design: Alvar Aalto



“MARMOLEUMTAFEL”; design: Richard Hutten, The Netherlands

Furniture linoleum

endless combinations



Tvis, Denmark



30

Tvis, Denmark



TRIPLEX, Switzerland



ELBAU, Switzerland



BULTHAUP KITCHENS, Germany

31