

ColoRex<sup>®</sup>plus



**A unique flooring solution**

forbo



## Combined added values...

- **Avoids expensive restorations.**
- **Quick and easy loose laid installation without downtimes, disturbing odours and dust.**
- **Immediately trafficable after installation, with high point resilience. Suitable for heavy loads\*.**
- **Slip resistant and comfortable to walk on.**
- **Can be installed on defective, scruffy or oily subfloors.**
- **Covered dovetailing system and suitable for heat welding.**
- **Electrostatic conductive (EC version).**
- **Reusable.**
- **Suitable for installation on subfloors with high moisture, thanks to the ventilated honeycomb backing structure.**
- **Easy machine cleaning for cost effective maintenance.**

\* Pallet jacks: up to 1.5 T. Forklifts: Hard wheels up to 2.5 T. - Air tires up to 5.0 T.  
Static loads: 50kg/cm<sup>2</sup> – Dynamic loads: 90 kg/cm<sup>2</sup>. Subject to actual conditions.



## ...the solution!





















ColoRex<sup>®</sup>plus is a high performance floor covering system in tiles for all those areas of application where other flooring products would simply be overstressed, making expensive subfloor preparation and production downtimes necessary.

ColoRex<sup>®</sup>plus is a homogeneous floor covering system that can be loose laid on nearly every kind of subfloor, regardless of their condition. ColoRex<sup>®</sup>plus comes in three different versions, meeting a large variety of performance requirements: the standard ST tiles with a studded and slip resistant surface, the AS version featuring a genuine ColoRex<sup>®</sup> surface in various colours and the EC version with specific conductive properties. All three versions can be seamlessly combined together. As an addition, tiles can be heat welded for hygiene critical applications.

ColoRex<sup>®</sup>plus can be loose laid and it is immediately accessible. Tiles are dovetailed, with the dovetail connection system remaining covered under the surface. Due to the unique structure of this product, electrical conductivity is guaranteed for the first time also on a loose laid flooring system. ColoRex<sup>®</sup>plus is a patented solution from Forbo.

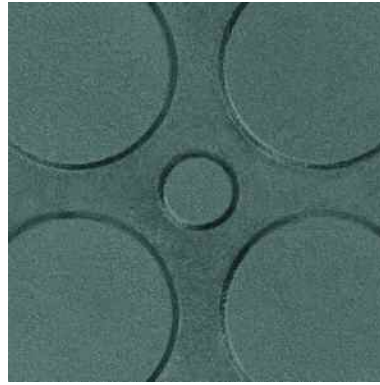


## Performance data

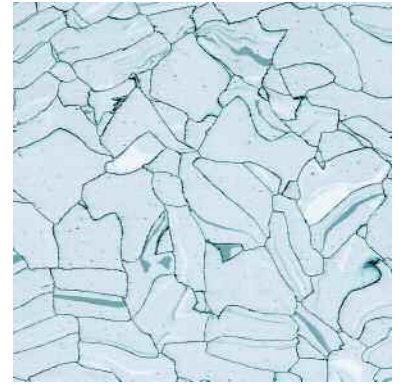
		ST	AS	EC
 Classification	EN 649	34 / 43 	34 / 43 	34 / 43 
CE marking	EN 14041	Compliant	Compliant	Compliant
Surface		Studded	Smooth	Smooth
 Collection size		1	5	5
 Total thickness	EN 428	10.5 mm	10.5 mm	10.5 mm
 Tile size (without dove tails)	EN 427	608 x 608 mm	608 x 608 mm	608 x 608 mm
 Weight	EN 430	11.4 kg/m <sup>2</sup>	12.4 kg/m <sup>2</sup>	12.4 kg/m <sup>2</sup>
 Tile weight		4.2 kg	4.6 kg	4.6 kg
 Burning behaviour	EN 13501-1	B <sub>fl</sub> - s 1	B <sub>fl</sub> - s 1	B <sub>fl</sub> - s 1
Critical heat flux	EN ISO 9239-1	≥ 8.0 kW/m <sup>2</sup>	8.9 kW/m <sup>2</sup>	8.9 kW/m <sup>2</sup>
Smoke density	EN ISO 9239-1	≤ 750 % .min	465 % .min	465 % .min
Flame spread	EN ISO 11925-2	< 150 mm	< 150 mm	< 150 mm
 Slip resistance	EN 13893 – dry surfaces DIN 51131 – wet surfaces	μ: 0.6 R11	μ: 0.6 R9	μ: 0.6 R9
 Wear resistance	EN 660-1	n.a.	Group M	Group M
 Electrical resistance	IEC 61340-4-1 EN 1081	–	–	< 1 x 10 <sup>6</sup> Ω
 Body voltage generation – Walking test	IEC 61340-4-5 ANSI/ESD STM 97.2 EN 1815	< 2 kV	< 2 kV	< 70 V
 Impact sound reduction	EN ISO 140-8	12 dB	12 dB	12 dB
 Colour fastness	EN 20 105-B02 method 3	≥ 6	≥ 6	≥ 6
 Thermal dilatation coefficient		0.11 mm/m°C	0.11 mm/m°C	0.11 mm/m°C
 Resistance to loads (performance may vary, subject to local conditions)		Powered pallet trucks and forklifts: total weight up to 2.5 t with hard wheels and up to 5 t with air tires. Static loads: 50 kg/cm <sup>2</sup> – Dynamic loads: 90 kg/cm <sup>2</sup>		
 Chemical resistance	EN 423	Excellent (details available upon request)		
 Shipping units		160 tiles = 59.14 m <sup>2</sup> /crate 5 tiles = 1.84 m <sup>2</sup> /carton		

# Colours

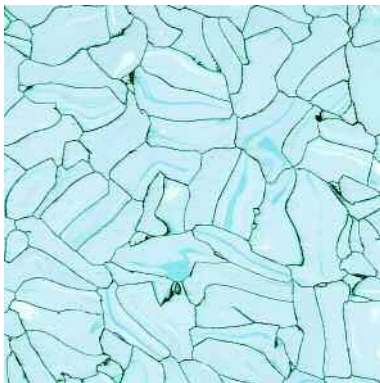
Additional colours from the ColoRex® collection available upon request. Inlaid company logos and signs possible on AS and EC tiles.



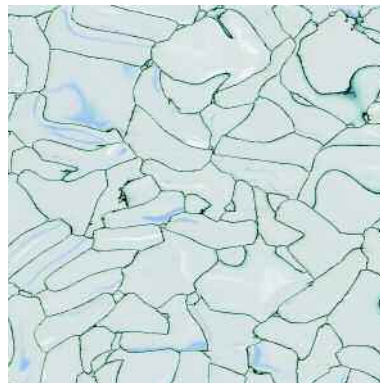
Dark grey  ST 60 10 60



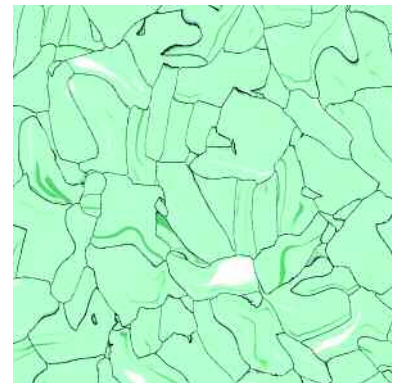
Montblanc  EC 62 10 04




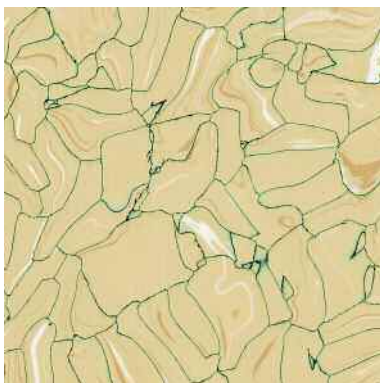
Pacific  EC 62 10 21



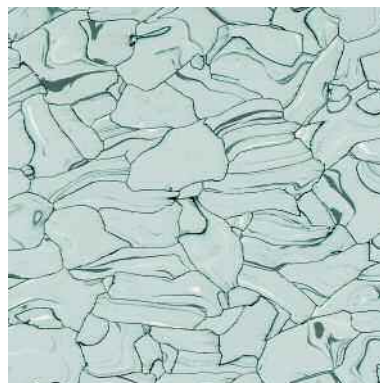
Gobi  EC 62 10 11



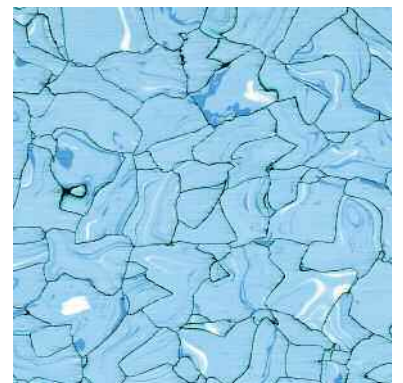
Kiwi  EC 62 10 25



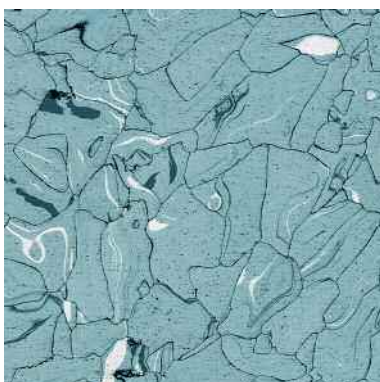
Oasis  EC 62 10 15



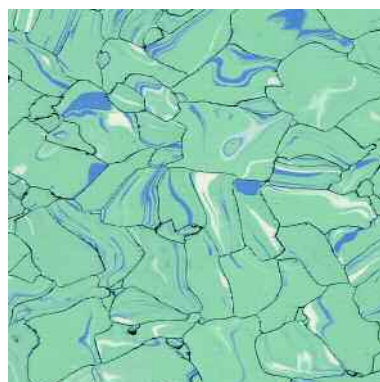
Adula  AS 61 10 05



Niagara  AS 61 10 22



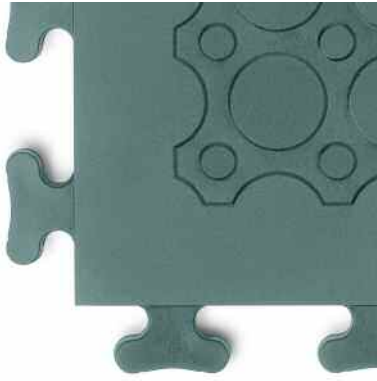
Quartz  AS 61 10 07



Jasmine  AS 61 10 27



Sahara  AS 61 10 13



ST tile, surface



EC/AS tile, surface



Honeycomb structure, back side





## Fields of application

- Commercial and industrial areas
- Production areas and workshops
- Warehouses and distribution centres
- Food industry
- Large shopping centres
- Exhibition halls and booths
- Shops and showrooms
- Printing plants
- Pharmaceutical and biotech industry
- ESD protected areas

Especially suitable for the restoration of:

- High traffic areas
- Areas requiring high slip resistance
- Areas with high moisture
- Temporary floorings
- Raised and hollow space floors





**Manufactured by**

**Forbo-Giubiasco SA**

Via Industrie 16  
CH-6512 Giubiasco  
Switzerland

Tel. +41 91 850 01 11

Fax +41 91 850 01 31

[plus@forbo.com](mailto:plus@forbo.com)

[www.colorexplus.com](http://www.colorexplus.com)

