

creating better environments

project vinyl

**eternal
smaragd
effect**

HETEROGENEOUS VINYL

forbo

FLOORING SYSTEMS

Content

Introduction	3
Product ranges	4
effect	6
Colour overview	10
eternal	16
smaragd	20
Forbo FloorCare method	22
Technical specifications	23



For colours, for design, for choice.

This collection places an even greater choice at the fingertips of architects, flooring contractors and end-users. Enabling you to create interior environments that are both functional and inspiring, today, and for years to come.



Innovative collections

PUR Pearl™

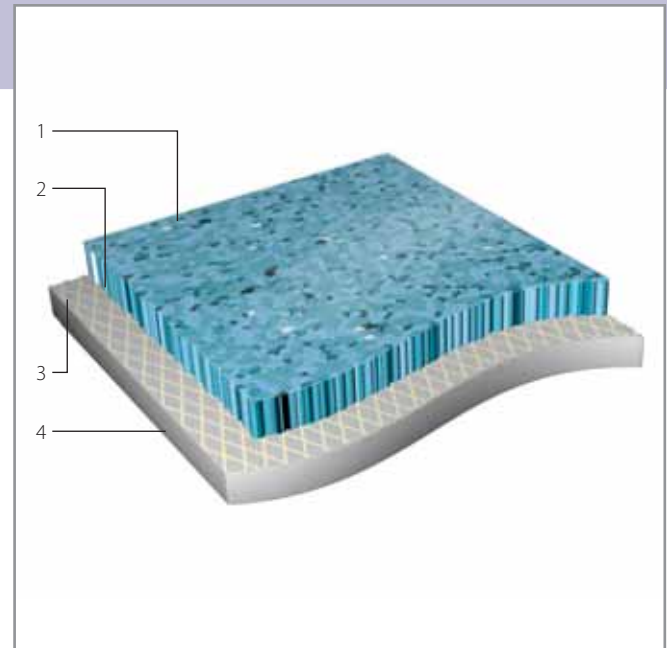
The floors in our collections are protected by the **PUR Pearl™** lacquered surface providing Effect, Eternal and Smaragd with their superior and proven performance.

Attributes of the PUR Pearl™ surface are:

- Distinctive, smooth and lustrous matt finish
- Superior long-lasting appearance
- High scratch and scuff resistance
- Easy cleaning and maintenance
- Overall increased wear resistance

Design characteristics and performance

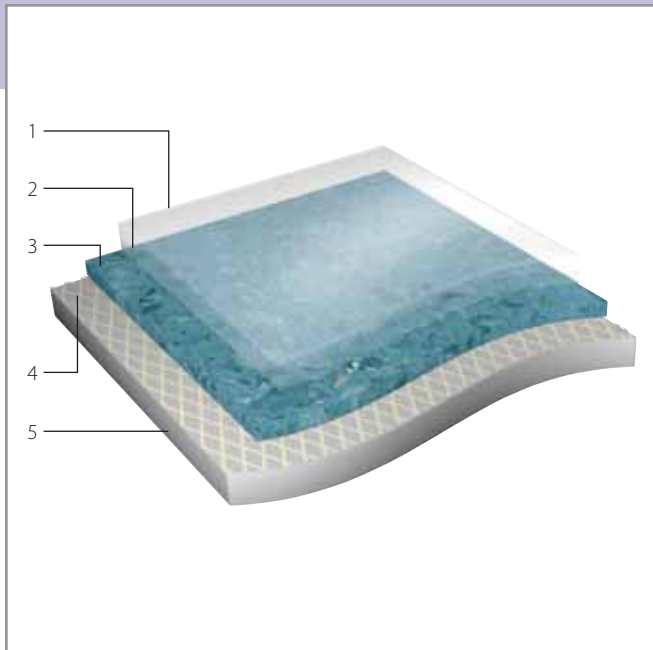
- Elaborate choice of ranges and designs
- Unlimited combination possibilities
- Disguises wear and dirt
- State of the art technical performance
- Effect and Smaragd have dissipative electrical properties
- Acoustic selection in Eternal Wood designs
- R10 in antislip performance
- Recycled content
- Optimal environmental profile



effect

1. PUR Pearl™ lacquered surface gives the floor its superior appearance while reducing scratch and dirt visibility and offering excellent cleaning properties. Slip resistance rating – R10.
2. The 1 mm homogeneous compact wear layer ensures the durability of the product, making it extremely wear resistant while protecting the design.
3. Fully impregnated glass fleece carrier makes the flooring stable and compact.
4. Solid compact backing adds strength, ensures easy installation and improves the floor's dissipative properties.

There are 3 product ranges in the Forbo project vinyl collection for all types of general application flooring. Here's an overview.



eternal

1. PUR Pearl™ lacquered surface gives the floor its superior appearance while reducing scratch and dirt visibility and offering excellent cleaning properties. Slip resistance rating – R10.
2. 0.7 mm 100% PVC compact wear layer is extremely durable, protecting the design layer against heavy use.
3. Printed using environmentally friendly water-based inks that ensure colours remain vibrant and beautiful throughout the lifetime of the product.
4. Fully impregnated glass fleece carrier makes the flooring stable and compact.
5. Calandered backing adds additional stability and its smooth surface has excellent adhesion properties for easy installation, comprising of 70% recycled PVC.



smaragd

1. PUR Pearl™ lacquered surface gives the floor its superior appearance while reducing scratch and dirt visibility and offering excellent cleaning properties. Slip resistance rating – R10.
2. 0.7 mm 100% PVC compact wear layer is extremely durable, protecting the design layer against heavy use.
3. Designs are printed on a coloured substrate, providing Smaragd products with their classical, timeless looks.
4. Fully impregnated glass fleece carrier makes the flooring stable and compact.
5. Solid compact backing adds strength, ensures easy installation and improves the floor's dissipative properties.

effect - inspirational durability

Imagine flooring that's both exciting and practical – that's Effect. Not only are the patterns fresh and original. This range is manufactured using our granule process that forms high-density 2 mm products that are exceptionally resistant to wear, abrasion and indentation. The PUR Pearl™ matt finish adds to the aesthetic appeal, and provides a surface that is incredibly easy to clean and maintain, lasting a lifetime.



effect linea

This is a range that challenges convention.

Choose from 6 metallic, luminous colours

each with a linear structure that offers a

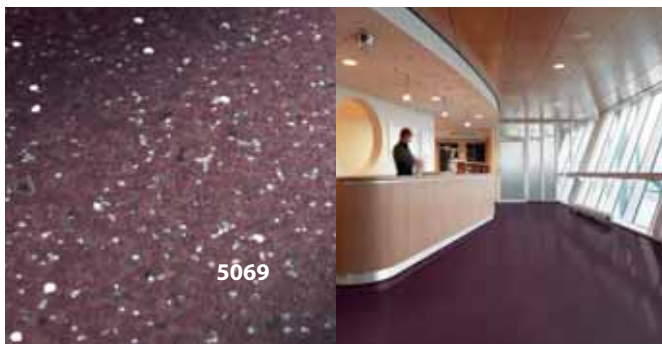
strikingly different look compared with

more typical non-directional patterns.



effect volta

Fresh and original, rich and distinctive, this is flooring with universal appeal. The 20 designs form a universal colour palette designed to complement interiors in a wide variety of sectors.



effect contrast

Graphic, eye-catching and expressive; these patterns exploit black and white in a way that's rarely been seen before. Used in combination with other products they create memorable flooring feature areas.

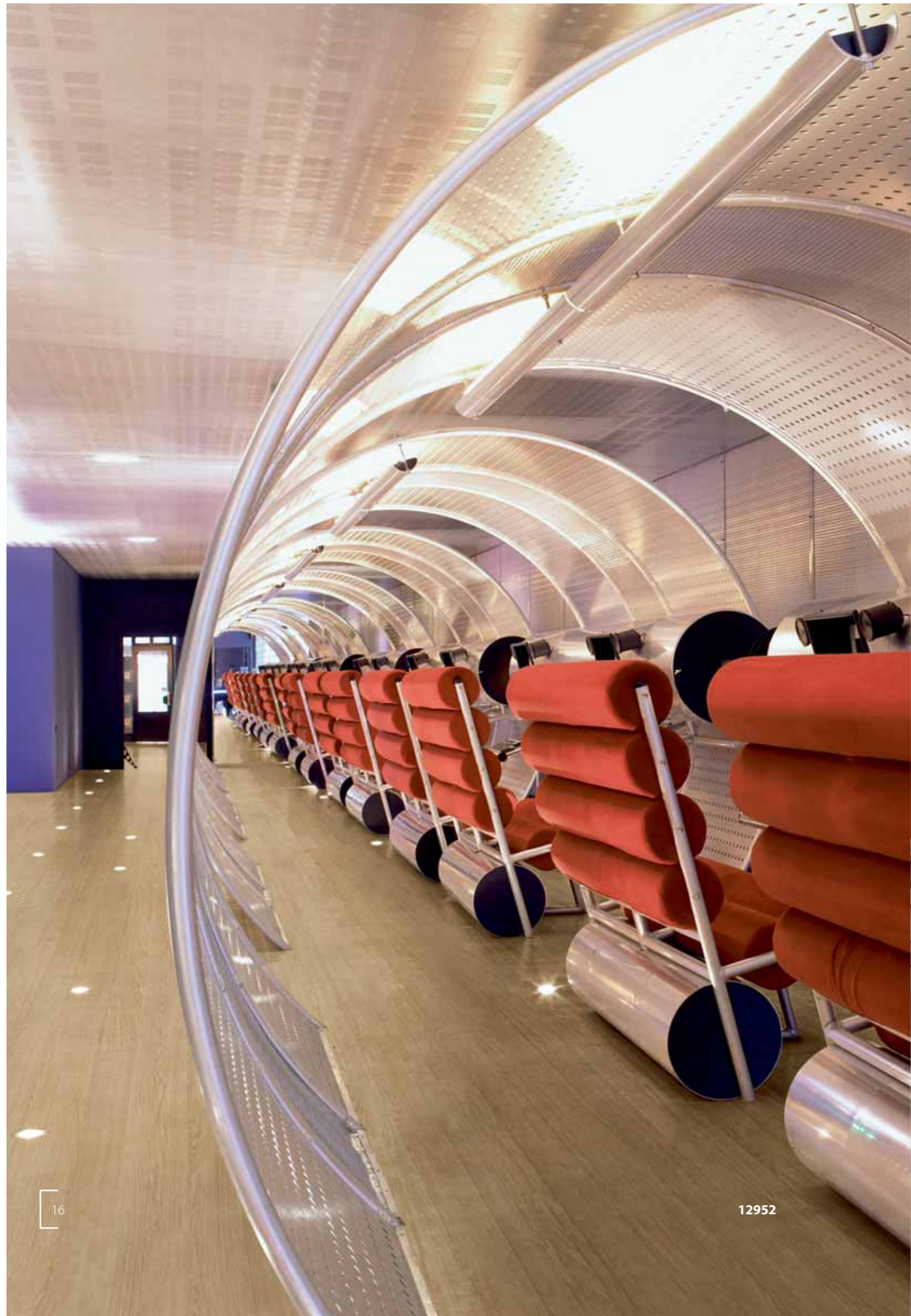




Forbo Flooring Collections

Forbo Flooring Systems offers you the most comprehensive range in commercial resilient floor coverings. Below you will find the overview of our core ranges.

	General purpose	Acoustic	Conductive	Dissipative	Tiles	Slip resistant
Marmoleum	•				•	
Marmoleum Acoustic		•				
Marmoleum Ohmex				•		
Marmoleum Decibel		•				
Marmoleum Sport						•
Marmoleum Dual					•	
Artoleum	•					
Cork linoleum		•				
Eternal	•					•
Smaragd	•			•		•
Effect	•			•		•
Surestep	•			•		•
Safestep				•		•
Sarlon Tech	•	•				•
Sarlon Quartz		•				
Sarlon Traffic		•			•	
Eternal Decibel		•				•
Allura	•				•	
Flex SL	•				•	
Colorex Concept	•				•	
Colorex SD				•	•	
Colorex EC			•		•	
Colorex Plus EC			•		•	
Colorex Plus AS	•				•	
Colorex Plus ST					•	



Three distinctive, durable product ranges. Together they make one superb collection.



eternal wood



eternal stone



eternal impact



eternal mica



smaragd classic



smaragd marble



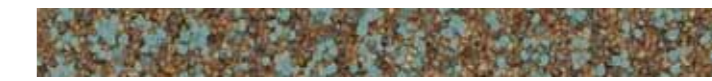
smaragd new original



effect volta



effect contrast



effect linea

Colour overview

Matching welding rods are available in all collection colours.

eternal wood



12802 - Elegant oak



11482 - Limed cherry



11462 - Light maple



11442, (11432*) - Washed beech



11512, (11532*) - Natural oak



11592 - Dark maple



12582 - Wengé



12722, (12792*) - Small-plank teak



12952 - Three-width oak



11562, (11762*) - Tropical beech



11542, (11552*) - Traditional oak



11492 - Warm cherry



12662 - Merbau

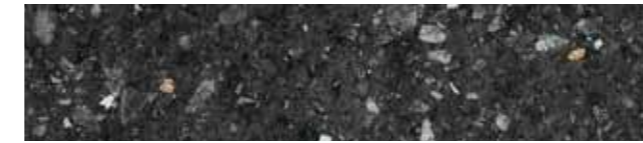


11522, (11822*) - Black oak

eternal stone



12022



12032



12012



12082



12062



12042

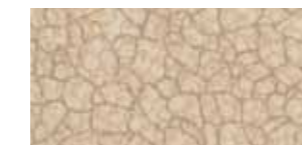


12072



12052

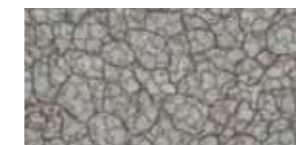
eternal impact



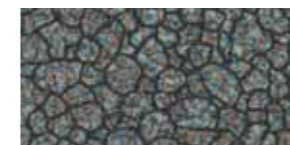
12362



12352



12342



12332



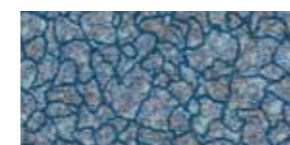
12372



12382



12312



12322

eternal mica



12112



12142



12172



12162



12122



12132



12102



12152



12192



12202



12212



12182

Matching welding rods are available in all collection colours.

smaragd classic



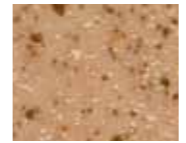
6101



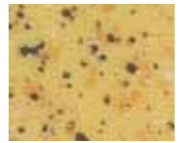
6151



6110



6134



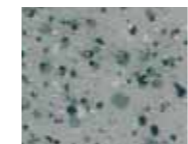
6133



6192



6104



6191



6130



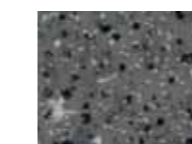
6125



6183



6175



6196



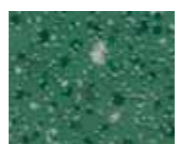
6108



6113



6127



6185



6174



6198



6109



6122



6155



6186



6176

smaragd marble



6452



6400



6412



6416



6436



6493



6497



6476

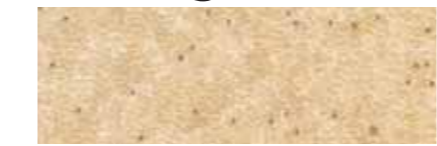


6403



6482

smaragd new original



6211



6270



6202



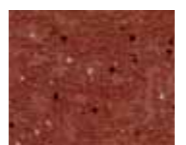
6299



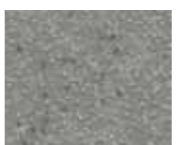
6280



6278



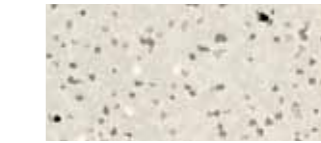
6245



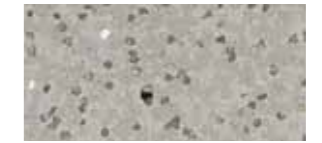
6207

Matching welding rods are available in all collection colours.

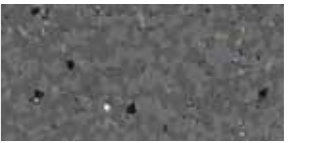
effect volta



5002



5004



5096



5097



5043



5012



5014



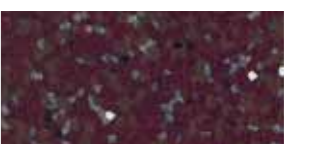
5024



5046



5027



5069



5055



5080



5086



5084



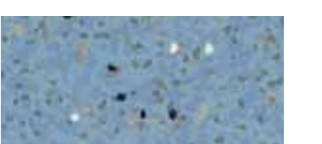
5079



5070



5075



5073

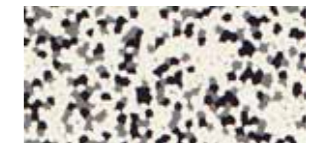


5077

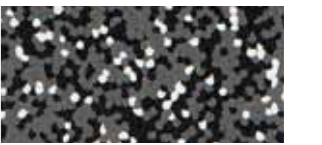
effect contrast



5100



5105



5195



5199

effect linea



5226



5252



5204



5286

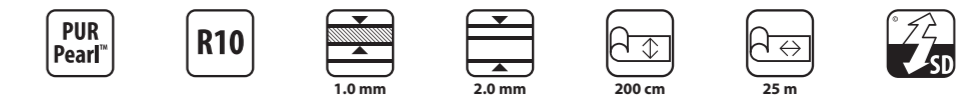
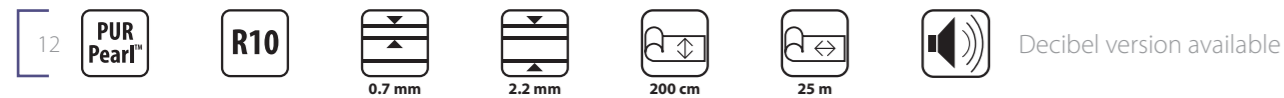


5209



5296

Matching welding rods are available in all collection colours.



eternal - unique, authentic, tough

Eternal utilises the very best from nature, with authentic designs and organic shapes of alluring beauty. The lacquered PUR Pearl™ matt finish adds to the overwhelming feeling of quality and provides a superior long-lasting solution.

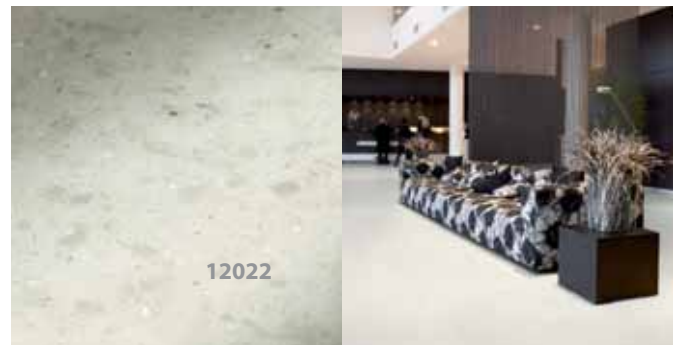
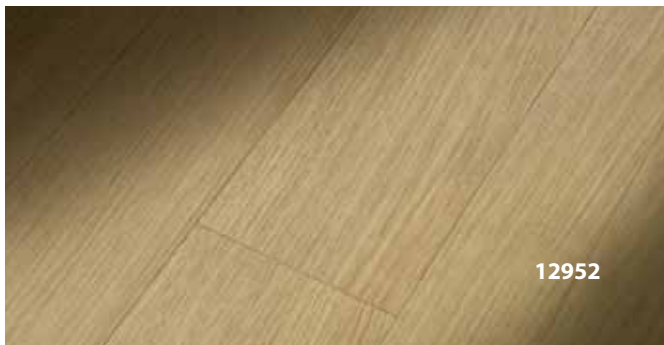
eternal wood

Create a warm, inviting classical or contemporary atmosphere with a realistic Eternal Wood floor.

The 14 designs are inspired by the world's finest hardwoods and range in colour from light beech, to middle oak and dark tropical woods.

eternal stone

Marvel at the classic, timeless appeal of polished stone flooring. The 8 elegant, subtle colours give each design a 3-dimensional authentic stone look varying in appearance from light granite to dark, solid colours with a more stony character.



Eternal Wood Decibel

A selection of 6 designs from the Eternal Wood range also come in an acoustic version. Eternal Wood Decibel combines comfort and strength by providing an excellent impact sound reduction of 17 dB without concessions to the performance.



17 dB



eternal impact

Taking its inspiration from the sea this intricate pattern is reminiscent of ocean coral. The refined multi-layered feel comes in 8 sophisticated colours to create the perfect ambience in any setting.



eternal mica

A vibrant pattern that's naturally pleasing to the eye, in 12 colours designed to add life to any interior. The range comprises a vivid palette of almost outspoken shades, of green, red, blue and yellow, complemented by natural grey and beige tones.



smaragd - subtle and hard wearing

Smaragd flooring has been proven, tried and tested for many years. The composition makes optimal use of each layer, culminating in a tough commercial product capable of withstanding everything a modern floor has to endure. What's more, Smaragd's PUR Pearl™ reinforced surface is more durable and requires less cleaning and maintenance.

smaragd classic

This beautiful flooring offers proven performance and refreshing choice. The range has been updated to offer all of the most fashionable colours, allowing the 24 timeless colours to fit effortlessly into a range of contemporary interiors.

smaragd marble

This classic Marble patterned range is both impressive and versatile. The natural, quiet structure adds style to a room without dominating it. What's more, marble can be used in combination with Forbo Marmoleum products to create stunning flooring features.



smaragd new original

8 new sensational colours have been conceived with architects in mind. The gentle, non-directional pattern has a flowing, organic appearance that blends effortlessly into a wide range of environments.



6211



Forbo FloorCare method

The Forbo project vinyl collections are easy to clean and maintain, thanks to their smooth and highly durable PUR coated surface.

Cleaning after installation



- Clean with neutral cleaner and mop
- Pick up dirty water with wiper and mop or water vac
- Rinse with clean water and mop
- Pick up water with wiper and mop or water vac
- No initial polymer required

Regular cleaning



- Wipe with dust mop, or vacuum the floor
- Remove spots with a damp mop

Periodic cleaning



- Spray clean with a rotary machine and a red buffing pad
- Use spray, only where necessary

Occasional maintenance





















- Scrub with water and neutral cleaner, rotary machine and scrub pad
- Pick up dirty water with wiper and mop or water vac
- Rinse with clean water and mop
- Pick up water with wiper and mop or water vac

Detailed information is available in our "Forbo FloorCare system" brochure. Please contact your sales office or download from www.forbo-flooring.com.au

Technical specifications






Eternal, Smaragd and Effect meet the requirements of EN 649

Eternal Wood Decibel meets the requirements of EN 651

		Eternal	Eternal Wood Decibel	Smaragd	Effect
 Total thickness	EN 428	2.2 mm	3.4 mm	2.0 mm	2.0 mm
 Thickness wear layer	EN 429	0.7 mm	0.7 mm	0.7 mm	1 mm
 Collection size		42	6	42	30
 Commercial very heavy	EN 685	Class 34	Class 34	Class 34	Class 34
 Industrial heavy	EN 685	Class 43	Class 42	Class 43	Class 43
 Roll width	EN 426	2.00 m	2.00 m	2.00 m	2.00 m
 Roll length	EN 426	± 25 m	± 20 m	± 25 m	± 25 m
 Total weight	EN 430	2.85 kg/m ²	3.1 kg/m ²	2.9 kg/m ²	2.9 kg/m ²
 Dimension stability	EN 434	< 0.1 %	< 0.1 %	< 0.1 %	< 0.1 %
 Indentation residual	EN 433	0.05 mm*	< 0.15 mm	0.03 mm*	0.03 mm*
 Abrasion resistance	EN 660-1	Group T	Group T	Group T	Group P
 Castor chair continuous use	EN 425	No effect	No effect	No effect	No effect
 Light fastness	ISO 105 B-02	≥ 6	≥ 6	≥ 6	≥ 6
 Flexibility	EN 435	ø 10 mm	ø 10 mm	ø 10 mm	ø 10 mm
 Resistance to chemicals	EN 423	Very good	Very good	Very good	Very good
 Slip resistance	DIN 51130	R10	R10	R10	R10
 Suitable for floor heating		yes**	yes**	yes**	yes**
 Acoustical impact noise reduction	EN ISO 717-2		17 dB		

Eternal, Smaragd and Effect meet the requirements of EN 14041



 Reaction to fire	EN 13501-1	B _{f1} -s ₁	B _{f1} -s ₁	B _{f1} -s ₁	B _{f1} -s ₁
 Slip resistance	EN 13893	DS: ≥ 0.30	DS: ≥ 0.30	DS: ≥ 0.30	DS: ≥ 0.30
 Body voltage	EN 1815	≤ 2kV	≤ 2kV	≤ 2kV	≤ 2kV
 Electrical resistance	EN 1081			R1 < 10 ⁹ Ω	R1 < 10 ⁹ Ω
 Thermal conductivity	EN 12524	0.25 W/m-K	0.25 W/m-K	0.25 W/m-K	0.25 W/m-K

* Typical value

** Temperature < 30 °C

Service products

As a total flooring solutions provider, Forbo offers a collection of products to complement the installation, finishing and maintenance of our products. An optimal assortment of adhesives, levelling compounds, primers, welding rods, subfloors and installation tools can be offered. To give the floor the finishing touch, we provide a collection of skirtings, profiles and stair nosings.

To ensure the floor remains in good condition in all circumstances, we also offer cleaning and maintenance products and entrance mats.

For more information please contact your sales office or visit www.forbo-flooring.com.au or www.halstead.co.nz

Forbo Flooring Systems is part of the Forbo Group, a global leader in flooring, bonding and movement systems, and offers a full range of flooring products for both commercial and residential markets. High quality linoleum, vinyl, needle punch and hardwood floors combine functionality, colour and design, giving you total flooring solutions for any environment.



Australia

Forbo Floorcoverings Pty Ltd
23 Ormsby Place
Wetherill Park, NSW 2164
Tel: +61 2 9828 0200
Fax: +61 2 9725 3456
E-mail: info.au@forbo.com
www.forbo-flooring.com.au

New Zealand

James Halstead Flooring New Zealand Ltd
PO Box 98943, S.A.M.C
Auckland 2140
Ph: 0800 425 783
Fax: 0800 846 737
E-mail: sales@halstead.co.nz
www.halstead.co.nz