

CREATING
PRE - CAST
CONCRETE
PRODUCTS
TO EXACT
SPECIFICATIONS
ON **PRESTIGE &
HIGH PROFILE
PROJECTS.**

The process of realizing an architectural vision, in full and complete certainty, can be a trying process. Suppliers need to work with architects, understanding and servicing their exact needs, rather than merely supplying goods for an end cause. With an exhaustive range of products and a rigorous process of manufacture, Chelmstone is able to customise and adapt to meet even the most complex and sophisticated specifications of your vision.

STATE LIBRARY OF QUEENSLAND





Our unique versatility lies in our ability to customize our product range to suit your defined requirements, enabling us to support a project from inception to completion. This versatility guarantees consistency of product and efficiency in supply, promising a seamless, refined finish to your overall vision.

Each Chelmstone product comes in a variety of styles and colours, including Quarriedstone, Limestone, Ashlarstone, Satinstone, Warwickstone, Antiquestone and Cobblestone. The characteristics of these variations range from the tactile, non-slip exposed aggregate finish of the Warwickstone and the pre-constructed old-style Cobblestone

matting, to the super-fine sandstone surface of the Antiquestone. Each style is fully customisable with colour selection available from a CCS colour chart, but also comes in up to nine pre-defined and popular tones. Our unique processes in aggregate selection allow us to modify our existing products to any colour necessary for your project. All Chelmstone pre-cast products are to your exact specifications, are individually inspected in our Brisbane workshops, and of the highest-grade raw materials available. Our exacting processes ensure that all Chelmstone products are highly durable, as they are significantly denser and less porous than other

products, and are completely free of contaminants and defects. In addition to this each piece is hand screeded to achieve maximum consistency in thickness and texture.

To realize a vision there must be no compromise. Chelmstone provides high quality, durable, and respected pre-cast concrete products to your exact specifications every time. Our willingness to undertake complex and sophisticated projects, our extensive and highly adaptable product range, and our commitment from start to finish all guarantee that the prestige, the value and the aesthetic that is Chelmstone will be realised in your vision.



GoMA

MUCH fanfare greeted the opening of the Gallery of Modern Art at South Bank. The latest and grandest Queensland icon, GoMA and its cohabitant, the State Library of Queensland, help make up the massive cultural jigsaw spreading across the South Bank precinct.

While GoMA, the largest contemporary art museum in Australia, and the State Library, command the attention of thousands of patrons, the surrounding landscape has not been left in the shade.



Architects Donovan Hill Peddle Thorp, architects in association, were handed the library site infrastructure works. Architect Damian Eckersley played a key role in the stunning vision that greets visitors.

"We came up with the colour scheme for the overall project and settled on shades of green, based on the tree species selected for the grounds," he said.

"We were looking at a deep vibrant colour for the concrete pavements, which are the largest area on the site, and are of pigmented concrete."

"The cappings to the planter beds were supplied by Chelmstone and were also of pigmented concrete."

"They had to be honed to provide a definite surface finish which brought out the colour of the pigment."

Mr Eckersley said the colour of the aggregate, the mixture of stone and sand was green with a myriad of shades."

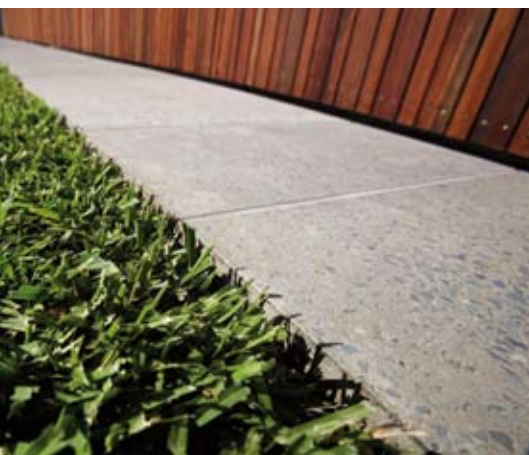
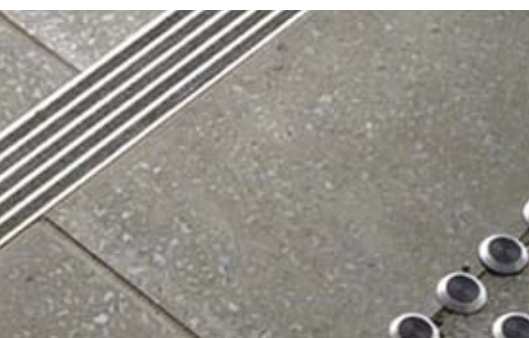
"We wanted the colours of the project to flow from the ground up into the building, which I believe we have achieved quite successfully," he said. Mr Eckersley said various aspects of the capping order required specialist tooling from Chelmstone.

"Of course, there was the custom colour which was designed specifically for the project," he said.

"Then there was the size of the capping pieces, which also were non-standard. We elected to go with two different sizes ... a small and a large module."

"With that we were able to place them at random with a hit and miss pattern. The two sizes gave us some flexibility and some texture."

"When we turned a corner or came up against stairs we were able to cut the tiles and they did not look out of place. It was pragmatism crossed with an aesthetic approach."



PORTSIDE

PORTSIDE WHARF BRISBANE

Portside Wharf Brisbane is the latest urbanite development located on the riverfront of the Brisbane River's north bank. Tastefully designed from an architectural and social perspective, Portside Wharf exhibits the best in boutique shopping, dining and waterfront living.

Chelmstone provided custom made pavers and pool coping for the

Portside Wharf Penthouses, which were completed in the first stages on construction. Chosen to emphasise the urbane, sophisticated style of the Portside area, the pool coping and pavers were made from classic Warwickstone.

Warwickstone is a classic commercial strength paver, notable for its exposed aggregate finish, its durability and

its non-slip characteristics. A unique feature of Chelmstone's Warwickstone is their use of Limestone aggregate, which provides an exposed light-white colouration over the surface of the stone. Classic Warwickstone has an exposed finish, and due to the grit level applied during the screeding process, delivers excellent slip-resistance in environments prone to water exposure and pooling.

KINGSCLIFF BEACH

Kingscliff, a public beach at the high end of the market, approached Chelmstone to help provide surface solutions for a large area of publicly accessible land. It needed to complement the surf-and-sand feel of the environment, but to also retain the sophistication and class that the retailers and local service providers brought to the region. The solution was Chelmstone Cobblestones.

Chelmstone Cobblestones are unique primarily due to the method of manufacture and installation.

While they retain the classic aesthetic and tactile characteristics that are associated with cobblestones, they differ in their manufacturing convenience and application. Chelmstone creates this product as a series of 'mats' – 765 x 385 x 40mm squares, interconnected by nylon fibres and constructed from randomly selected stones.

This approach makes the installation of cobblestones cost and labour efficient, and retains the design integrity desired by developers and

architects alike. It also allows the use of cobblestones over very large areas, and simplifies the transport and installation phases.

NORTH LAKES

Northlakes is an housing development spanning 1000 hectares, and although it is not yet fully developed, it is expected to eventually home around 20, 000 people, and provide employment for up to 13, 000.

Though Chelmstone's involvement in the overall development of Northlakes is small, they do provide a highly visible and important product that must represent everything embodied by this housing community. Chelmstone, along with Boral, are charged with creating the entry statements to Northlakes, located at every entrance of the estate. As Northlakes continues to expand, so does the need for the creation of further entry statement.

To cap the statements, Northlakes uses Chelmstone's Warwickstone in the Whitlock wall-capping style. These pre-cast concrete wall-capping products can be customized to fit any size and shape of a wall, and can be further customized by colour and style.



REFLECTION ON THE SEA

Reflection On The Sea is a 5-star luxury apartment complex located on the beachfront of Coolangatta. The Niceon Developments team of architects who were responsible for creating Reflection approached Chelmstone with a completely pre- envisaged design for the project. By working closely with the Niceon architects, Chelmstone customised a special-mix concrete that catered to the exact needs and colour specifications of the project.



OCEANS MOOLOOLABA

Oceans Mooloolaba Resort is Mooloolaba's only 5-star resort. Located in the centre of the esplanade, and directly opposite the Beachfront, it is the ultimate in Mooloolaba accommodation. Oceans was a 2007 Finalist for the 'Best Luxury Accommodation in Queensland' award, based on the stellar work that Architect Mike Swanson from the Place Design Group did, and the professional relationship he shares with Chelmstone,

which also includes work on the Sebel at Noosa, and other projects. Chelmstone was involved with Oceans based on their ability to manufacture custom pavers, coping and capping to exact specification. The level of customisation needed for the pool copings of this job meant that it had to be accurately assessed, measured, and produced to specification. The result was the successful completion of one

of Chelmstone's most sophisticated and ambitious projects. The pool required over 40 individual moulds to be created, to ensure the integrity of design was maintained.

The pool was coped with a customized pre-cast concrete mix manufactured to specification.

PALLAZO VERSACE

Palazzo Versace on the Gold Coast is the first 5-star hotel for the signature brand Versace. It boasts 3 award winning restaurants, a private marina, and an elegant ambiance of 'renaissance splendour'

Palazzo Versace is primarily designed to incorporate the aesthetic beauty that only comes from the use of natural stone. As the creation of this

architectural vision neared completion, it became evident that they lacked the facilities, supplies and expertise to adequately finish construction. Given Chelmstone's reputation for being able to work to specification, they were called and briefed on the requirements.

The Versace project had underestimated the required quantities of natural stone,

and needed a company capable of replicating the size, shape and texture to complete the job. By creating entirely new stone products, and adhering closely to the custom specifications provided by the architects and builders, Chelmstone was able to allow the seamless completion of the project and ensure that the elegance and aesthetic of the 5-star hotel was maintained.

CORONATION DRIVE

Coronation Drive is a significant stretch of main road joining the Brisbane CBD to the suburb of Toowong. It hugs the bank of the Brisbane River, and thousands of commuters travel on it every day.

Working with Moggill Construction, Chelmstone produced the wall capping used in the Coronation Drive Expansion Project. The job required the custom manufacture of three capping moulds to suit the pitched blue stone wall.



BRISBANE SYDNEY MELBOURNE

HEAD OFFICE
10 Neon Street
Sumner Park
Qld 4074

.....
p. (07) 3279 3177

f. (07) 3279 0301
.....

e. info@chelmstone.com.au

.....
WWW.CHELMSTONE.COM.AU