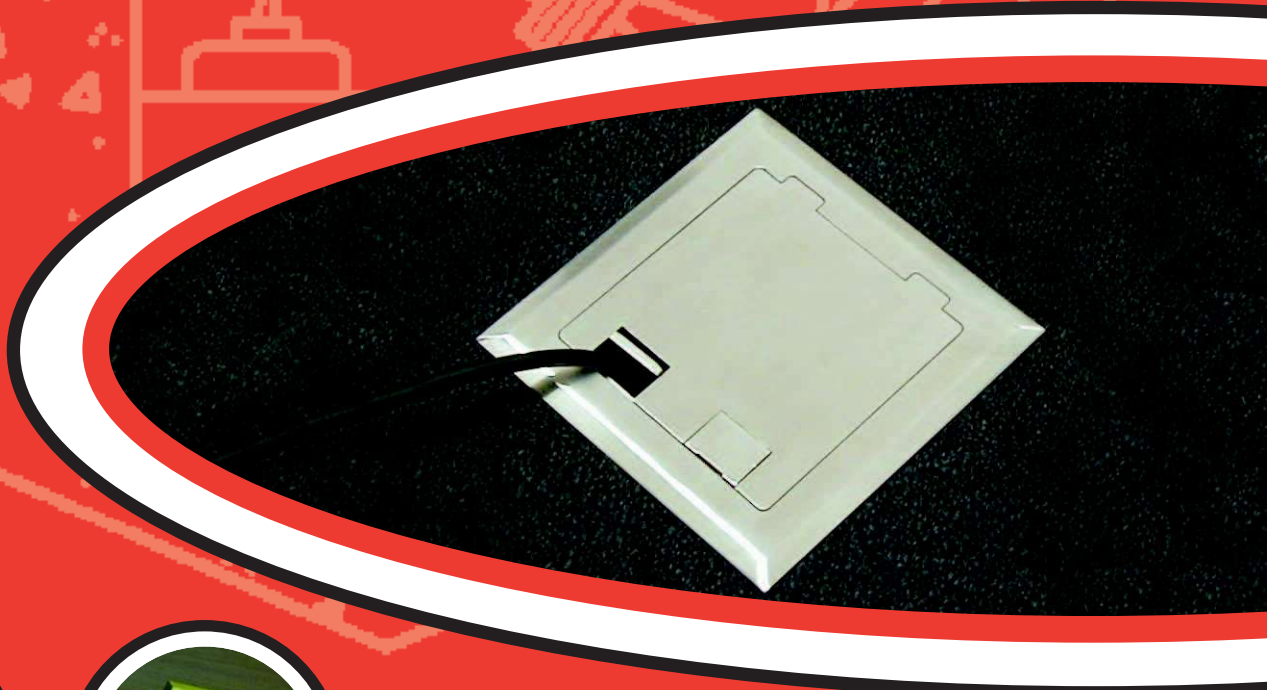
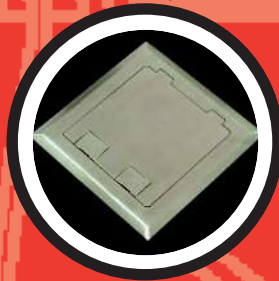


# 140 SERIES FLOOR BOXES

- In-Floor Power Outlets & Communications Sockets
- Bring power to open-plan areas without extension cords
- Supply power to areas with full height windows
- Connect to floor lamps and home theatre equipment
- Stylish & Compact Stainless Steel & Brass look Covers
- Versatile, Practical & Decorative Open-Plan Cabling



135mm

## 140 SERIES FLOOR BOXES

Compact and stylish, the 140 Series of Floor Boxes provide ready access to power and communication outlets recessed in the floor.

Ideal when locating floor lamps and home theatre equipment away from walls or when outlets are required adjacent to full height windows or balustrades.

Suitable for use in modern open plan living areas, showrooms, shop-front displays, boardroom tables, schools, universities and public buildings.

Available in Stainless Steel and Brass\*, the hard wearing 145x145mm cover bevels down to a fine edge under foot and is suitable for use with polished floor boards, carpet, ceramic tiles and vinyl floor coverings (not suitable for use in wet areas).

Two small flaps allow cords out of the box when in use and close flat when not in use.

The conduit fed recessed box body measures 126mm ~~135~~ x 135 x 100mm deep and will house a variety of electrical, communications and TV / AV sockets.

A versatile, practical and decorative solution to your open plan cabling needs.

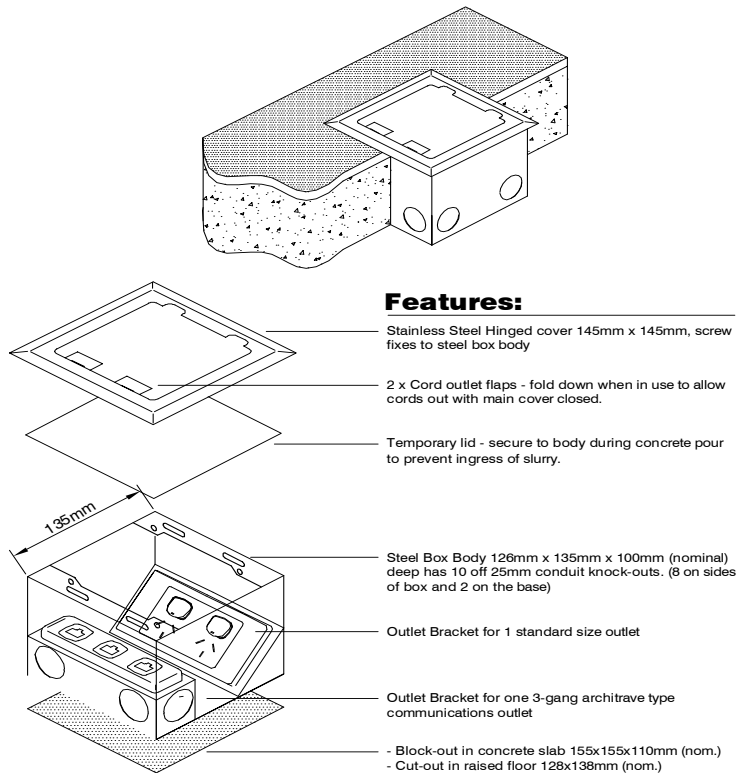
### At a glance ...

FFOB-144	:	Brass* single compartment floor box
FFOB-145	:	Stainless Steel single compartment floor box
FFOB-147	:	Brass* two compartment floor box
FFOB-148	:	Stainless Steel two compartment floor box

\*Brass look – made of composite materials predominantly Cuprum.

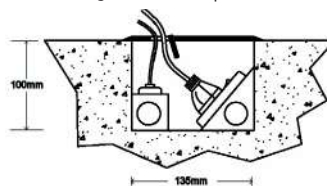


### Assembly Diagram

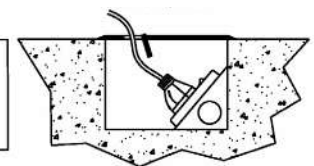


Assembled side view FFOB-147 and FFOB-148 two compartment format showing cord outlet flap in use.

Assembled side view FFOB-144 and FFOB-145 single compartment format showing cord outlet flap in use.



Single Compartment Floor Outlet Box  
FFOB-144 - Floor Box with Brass Look cover  
FFOB-145 - Floor Box with Stainless Steel cover  
Two Compartment Floor Outlet Box  
FFOB-147 - Floor Box with Brass Look cover  
FFOB-148 - Floor Box with Stainless Steel cover



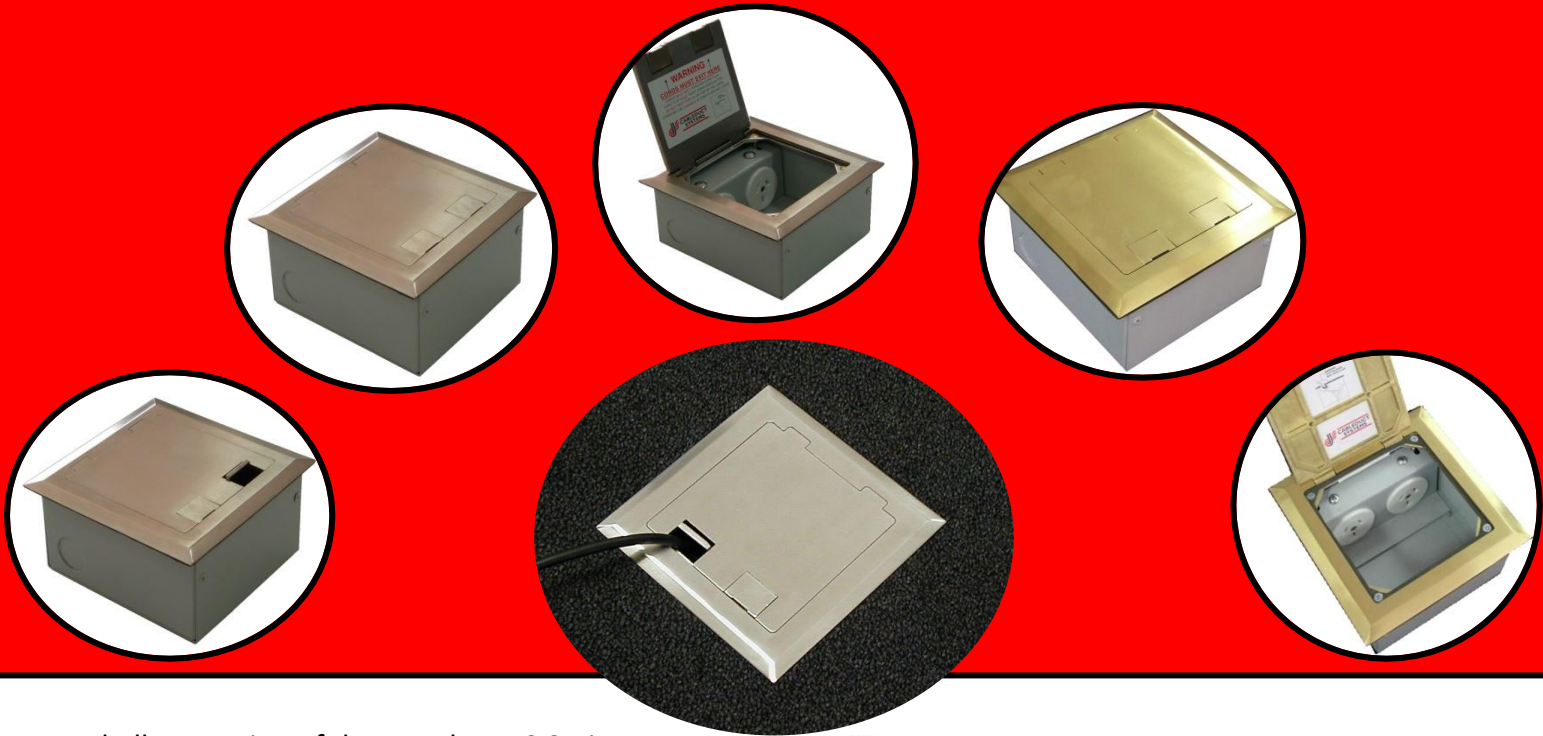
### Cableduct Systems Pty Ltd

ABN: 44 009 331 962  
Tel: (08) 9204 4444  
Fax: (08) 9204 4455  
Web: [www.cableduct.com.au](http://www.cableduct.com.au)  
Email: [info@cableduct.com.au](mailto:info@cableduct.com.au)

All dimension quoted are nominal only. Drawings, images and text are for illustrative purposes only and product details and dimensions are subject to change without notice.

This product is not suitable for use in wet areas, is intended for use with fixed wiring only and must be installed by a licensed Electrical Mechanic in accordance with AS 3000, SAA Wiring Rules and Austel requirements.

# SHALLOW 140 SERIES FLOOR BOXES

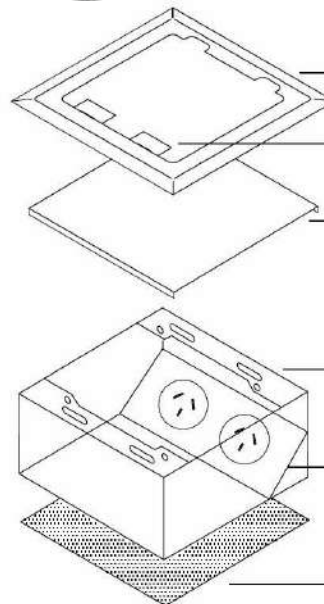


A shallow version of the popular 140 Series floor outlet boxes. These models have a depth of only **65mm**.

Available in either Stainless Steel or Brass look finish, the covers bevel down to a fine edge under foot. The covers are suitable for a variety of floor finishes.

Two small cord outlet flaps allow cables to exit the box when in use and fold flat when not in use.

Standard supply includes two 10A autoswitched power sockets.



### Features:

- Stainless Steel Hinged cover 145mm x 145mm, screw fixes to steel box body
- 2 x Cord outlet flaps - fold down when in use to allow cords out with main cover closed.
- Temporary lid - secure to body during concrete pour to prevent ingress of slurry.
- Steel Box Body 130mm x 135mm x 65mm (nominal) deep has 5 off 25mm conduit knock-outs - feeding bracket. (4 on sides of box and 1 on the base)
- Outlet Bracket for 2x autoswitched power outlet
- Block-out in concrete slab 155x155x75mm (nom.)
- Cut-out in raised floor 132x138mm (nom.)

### At a glance...

Part #: FFOB-142 - Shallow Brass look Floor Box  
Part #: FFOB-143 - Shallow Stainless Steel Floor Box  
each supplied with 2x 10A autoswitched power sockets

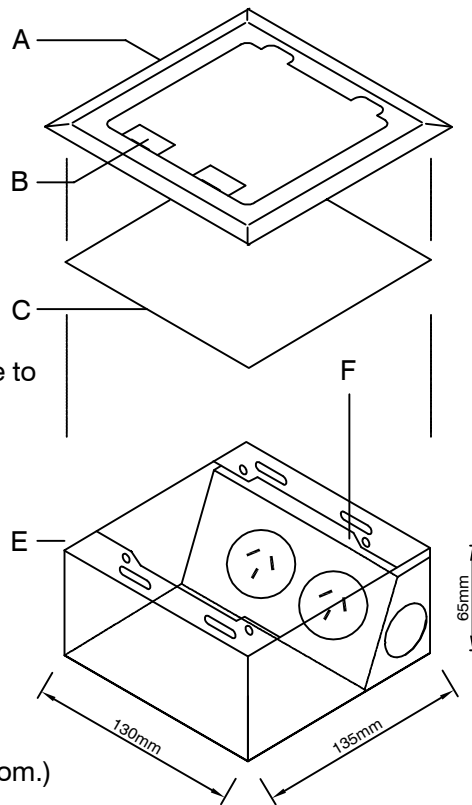
Cover Size: 145 x 145mm Box Body Size: 130 x 135mm

# Assembly Diagram Shallow 140 Series

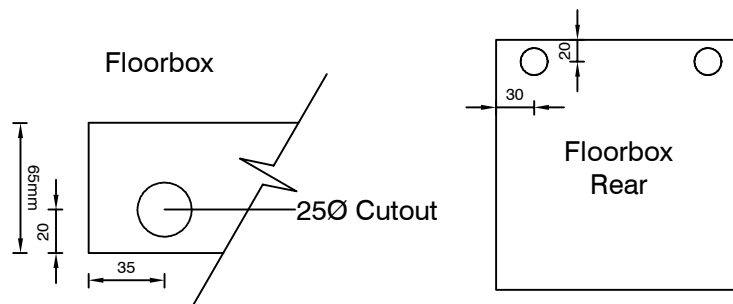
## Features:

- A. Hinged cover 145mm x 145mm, screw fixes to steel box body
- B. 2 x Cord outlet flaps - fold down when in use to allow cords out with main cover closed.
- C. Temporary lid - secure to box body during concrete pour to prevent ingress of slurry.
- E. Steel Box Body 130mm x 135mm x 65mm (nominal) deep has 6 off 25mm conduit knock-outs. (4 on sides of box and 2 on the base)
- F. Outlet Bracket for 2x autoswitched Power sockets

Block-out in concrete slab 155x155x75mm (nom.)  
Cut-out in raised floor 132x138mm (nom.)



**FFOB-142 & FFOB-143**



**Typical Conduit Knockout Location and size**

**Single Compartment Floor Outlet Box**  
**FFOB 142** - Floor Box with Brass Look Cover  
**FFOB 143** - Floor Box with S/Steel Cover

All dimension quoted are nominal only. Drawings, images and text are for illustrative purposes only and product details and dimensions are subject to change without notice.

This product is not suitable for use in wet areas, is intended for use with fixed wiring only and must be installed by a licensed Electrical Mechanic in accordance with AS 3000, SAA Wiring Rules and A.C.A. requirements.

**\*Brass Look** - made of composite materials predominantly Cuprum.