

Washroom Accessories



BOBRICK

BUILDING VALUE SINCE 1906



BOBRICK INVENTED THE SOAP DISPENSER IN LOS ANGELES, CALIFORNIA, USA, IN 1908.

OUR STAINLESS REPUTATION.

Reputation for Excellence.

Since 1906, Bobrick has led the industry in designing and manufacturing quality washroom accessories. We offer the broadest range of commercial accessories available anywhere, supported by six manufacturing plants and a full-service distribution network serving more than 80 countries. Strategically-located warehouses enable Bobrick to meet construction deadlines and opening schedules with timely deliveries. Our multi-lingual staff takes great pride in providing fast, reliable and courteous customer service.

Reputation for Value.

Bobrick products feature innovations that reduce maintenance and replacement costs. Non-proprietary designs facilitate cost-effective sourcing of paper and soap refills. Advanced manufacturing techniques and high-volume economies of scale ensure competitive prices.

Reputation for Durability.

Heavy-gauge, type 304 stainless steel results in long-lasting, corrosion-resistant products. Piano hinges and robust tumbler locks are designed for use in heavy traffic and vandal-prone facilities, reducing building owners' maintenance costs.

FOUR CORE VALUES.

Bobrick's international success is a result of the Company's outstanding relationships with our employees, architects, building developers, contractors, property managers, suppliers, sales representatives, and channel partners.

Do the right thing; conduct all aspects of the business honestly, ethically and responsibly.

Offer the best value; provide products and services which best meet each customer's needs.

Treat each person with dignity and as an individual; help each person develop and achieve the maximum of their potential.

Continuously improve everything we do.

THREE DISTINCT WASHROOM ACCESSORY SERIES ENGINEERED TO MEET YOUR DESIGN, DURABILITY AND BUDGET REQUIREMENTS.

ConturaSeries® Gentle arcs and radiuses, uni-directional grain, seamless monoform draws.

TrimLineSeries™ Bauhaus minimalism with flush architectural surfaces, concealed flanges.

ClassicSeries™ Industry standard for value offering the widest selection of models.

- Type 304 satin-finish stainless steel
- Design-integrated families of models
- Dispense nonproprietary consumables
- Quality construction, hemmed edging
- Barrier-free compliance for disabled
- 50%–70% recycled stainless steel

BUILDING TYPES AND OCCUPANCY NEEDS.

Prestige Buildings

Signature projects and Class A properties such as corporate headquarters, museums and civic icon buildings where a distinctive design statement and a coordinated, high-quality finish are desired. Examples: London's Canary Wharf, the Sydney Opera House, embassy buildings and first-class airline lounges worldwide.

Heavy Traffic Buildings

Airports, stadiums, shopping malls, amusement and recreational centers, schools and other buildings that experience heavy use, abuse and vandalism require durable, high-capacity washroom accessories. Examples: Disneyland Hong Kong, London Underground, McDonald's.



PETRONAS TWIN TOWERS (KLCC), KUALA LUMPUR



DUBAI INTERNATIONAL AIRPORT



POLICE HEADQUARTERS, AUSTRALIA

Standard Use Buildings

Commercial, government, health care and industrial buildings with moderate traffic flows and sensitive budgets benefit from the increased life expectancy and practicality of stainless steel. A broad selection of recessed and surface-mounted accessories permits the use of quality products even when budgets are tight.

PRODUCT SELECTION GUIDE

PRODUCT CATEGORY	MODEL NO.	SERIES	PRODUCT DESCRIPTION	PRESTIGE	HEAVY TRAFFIC	STANDARD USE	COST
Combination	B-4369	Contura	Recessed	✓			\$\$
Paper Towel	B-43944	Contura	Recessed	✓			\$\$\$\$
Dispensers and Waste Receptacles	B-43949	Contura	Surface Mounted	✓			\$\$\$\$
	B-36903	TrimLine	Recessed	✓		✓	\$
	B-38033	TrimLine	Incorporates Automatic Hand Dryer	✓		✓	\$\$\$
	B-38034	TrimLine	Recessed	✓		✓	\$\$
	B-369	Classic	Recessed			✓	\$
	B-3699	Classic	Surface Mounted			✓	\$\$
	B-3942	Classic	Semi-Recessed Convertible			✓	\$\$\$
	B-3944	Classic	Recessed Convertible			✓	\$\$
	B-3949	Classic	Surface Mounted Convertible			✓	\$\$\$
	B-3947	Classic	Recessed Convertible		✓		\$\$
	B-39617	Classic	Recessed Convertible Roll		✓		\$\$\$
Soap Dispensers	B-4063	Contura	Recessed	✓			\$\$\$\$
	B-4112	Contura	Surface Mounted	✓			\$\$\$
	B-822	Contura	Lavatory Mounted	✓	✓	✓	\$
	B-26607	TrimLine	Surface Mounted Cartridge Liquid	✓	✓	✓	\$\$
	B-26627	TrimLine	Surface Mounted Cartridge Foam	✓	✓	✓	\$\$
	B-2111	Classic	Surface Mounted		✓	✓	\$
	B-2112	Classic	Surface Mounted		✓	✓	\$
Paper Towel Dispensers	B-4262	Contura	Surface Mounted	✓		✓	\$\$
	B-4362	Contura	Recessed	✓		✓	\$\$\$\$
	B-318	TrimLine	Concealed	✓			\$\$
	B-35903	TrimLine	Recessed	✓		✓	\$\$\$\$
	B-526	TrimLine	Countertop Recessed	✓		✓	\$\$
	B-262	Classic	Surface Mounted			✓	\$
	B-2621	Classic	Surface Mounted			✓	\$
	B-359	Classic	Recessed			✓	\$\$
	B-2860	Classic	Surface Mounted Roll		✓		\$\$\$
Waste Receptacles	B-277	Contura	Surface Mounted	✓			\$\$\$
	B-43644	Contura	Recessed	✓			\$\$\$\$
	B-527	TrimLine	Recessed Countertop Waste Disposal Door	✓		✓	\$\$
	B-275	Classic	Surface Mounted		✓	✓	\$\$
	B-279	Classic	Surface Mounted			✓	\$
	B-3644	Classic	Recessed		✓	✓	\$\$
	B-2250		Floor Standing Swing-Top		✓		\$\$
Toilet Tissue Dispensers	B-4288	Contura	Surface Mounted	✓			\$\$\$
	B-4388	Contura	Recessed	✓			\$\$\$
	B-543		Cubicle Collection Surface Mounted	✓		✓	\$
	B-2888	Classic	Surface Mounted Multi-Roll		✓	✓	\$
	B-3888	Classic	Recessed Multi-Roll		✓	✓	\$\$
	B-386		Partition Mounted Dual-Sided		✓	✓	\$\$\$
	B-2892	Classic	Surface Mounted Twin Jumbo-Roll		✓		\$\$\$\$
	B-2890		Surface Mounted Single Jumbo-Roll			✓	\$
Sanitary Product Waste Disposal	B-270	Contura	Surface Mounted	✓		✓	\$
	B-4354	Contura	Partition Mounted	✓			\$\$\$\$
	B-35303	TrimLine	Recessed	✓		✓	\$\$\$
	B-3541		Surface Mounted Disposal Bag Dispenser	✓	✓	✓	\$\$
	B-254	Classic	Surface Mounted		✓	✓	\$\$
	B-353	Classic	Recessed		✓		\$\$
	B-354	Classic	Partition Mounted		✓		\$\$\$
Grab Bars	B-5806		Concealed Mount - 32mm (1 ¼") diameter	✓	✓	✓	\$
	B-6806		Concealed Mount - 38mm (1 ½") diameter	✓	✓	✓	\$
Mirrors	B-290		Angle-Frame	✓			\$\$\$
	B-165		Channel-Frame		✓	✓	\$
Shower Accessories	B-6107	Classic	Surface Mounted Heavy Duty Shower Curtain Rod				\$\$
	B-5181		Reversible Folding Shower Seat	✓	✓	✓	\$\$
	B-5191		Folding Shower Seat		✓	✓	\$
	B-207	Classic	Shower Curtain Rod			✓	\$
	B-6047	Classic	Extra-Heavy-Duty Shower Curtain Rod		✓		\$
Warm Air Hand Dryers	B-715		Elan Surface Mounted	✓		✓	\$\$
	B-740		Eclipse Surface Mounted		✓	✓	\$\$
	B-748		Eclipse Surface Mounted	✓			\$\$\$
	B-709		AirPro Surface Mounted		✓		\$\$
	B-750		AirCraft Recessed		✓		\$\$
Baby Changing Stations	KB110-SSRE-INB	Koala Kare	Horizontal Recessed with Stainless Steel Finish	✓			\$\$\$\$
	KB100-00-INB	Koala Kare	Horizontal Wall Mounted		✓	✓	\$



TABLE OF CONTENTS

INDEX BY PRODUCT SERIES

BATHROOM ACCESSORIES	21-27
Ash Trays	
Bar Soap Holders	
Clothes Lines	
Door Bumper	
Facial Tissue Dispensers	
Hooks	
Medicine Cabinets	
Shelves	
Shower Curtains	
Shower Curtain Hooks	
Shower Curtain Rods	
Shower Seats	
Soap Dishes	
Spare Toilet Roll Holder	
Toilet Brush Holder	
Towel Bars	
CHILD CARE PRODUCTS	34-35
Koala Kare Baby Changing Stations	
Koala Kare Bed Liners	
Koala Kare Child Protection Seat	
COMBO. TOWEL/WASTE UNITS	10-12
CUBICLE COLLECTION	21
GRAB BARS	28-29
MIRRORS	30-31
PAPER TOWEL DISPENSERS	16-17
PRODUCT SELECTION GUIDE	4
SANITARY NAPKIN DISPOSALS	20
SOAP DISPENSERS	6-9
TOILET TISSUE DISPENSERS	13-15
WARM-AIR HAND DRYERS	32-33
WASTE RECEPTACLES	18-19
WARRANTIES/LIMITATIONS	35

CONTURA		TRIMLINE		CLASSIC			
MODEL NO.	PAGE NO.	MODEL NO.	PAGE NO.	MODEL NO.	PAGE NO.	MODEL NO.	PAGE NO.
B-270	20	B-26607	6	B-132	9	B-353	20
B-277	18	B-26617	6	B-155	9	B-354	20
B-319586	7	B-26627	6	B-207	25	B-359	17
B-4063	8	B-26637	6	B-2111	8	367-60	11
B-4112	8	B-306	8	B-2112	8	368-60	11
B-4262	16	B-318	16	B-2250	19	B-369	12
B-4288	13	B-35303	20	B-2260	19	B-3644	18
B-4354	20	B-35903	16	B-2280	19	B-3699	12
B-4362	16	B-36903	12	B-254	20	B-386	14
B-43644	18	B-3803	10	B-261	19	B-3888	13
B-4369	10	B-38032	10	B-262	16	B-3942	11
B-43699	10	B-38033	10	B-2621	17	B-3944	11
B-4388	13	B-38034	10	B-263	17	3944-52	11
B-43944	10	B-380349	10	B-272	13	B-3947	11
B-43949	10	B-39003	12	B-2721	13	B-3949	11
B-822	7	B-526	16	B-273	13	B-3961	11
B-8221	7	B-527	18	B-2730	13	3961-50	11
B-82216	7	B-529	18	B-27313	15	B-39617	11
B-8226	7	B-532	18	B-274	13	B-39619	11
B-922	7	815969	10	B-2740	13	B-40	9
B-9226	7			B-275	19	B-6047	25
				B-279	18	B-6107	25
				B-2860	17		
				B-2888	13		

THREE WAYS TO RECEIVE BOBRICK TECHNICAL DATA SHEETS:

1. Check the inside front cover of your Bobrick Binder for a Technical Data CD.
2. Contact your local Bobrick Representative.
3. Go to www.bobrick.com.

INDEX BY MODEL NUMBER

MODEL NO.	PAGE NO.	B-2730	13	B-3803	10	B-4998	29	B-680	26	B-7672	22
		B-27313	15	B-38032	10	B-4998.99	29	B-6806	28	B-76727	22
B-132	9	2733-103	15	3803-100	10	B-5181	26	B-6806.99	28	B-7673	23
B-155	9	B-274	13	B-38033	10	B-5191	26	B-6807	26	B-76737	23
B-165 Series	30	B-2740	13	B-38034	10	B-526	16	B-681	27	B-7674	23
B-166 Series	30	B-275	19	B-380349	10	B-527	18	B-68137	28	B-76747	23
B-1658 Series	31	B-277	18	B-386	14	B-529	18	B-68137.99	28	B-7676	23
204-1	25	B-279	18	B-3888	13	B-532	18	B-682	22	B-76767	23
204-2	25	283-604	15	B-39003	12	B-541	15	B-6827	22	B-7680	26
204-3	25	B-2860	17	B-3942	11	B-542	21	B-683	23	B-76807	26
B-207	25	B-287	26	B-3944	11	B-543	15	B-685	14	B-7681	27
B-211	22	B-2888	13	3944-52	11	B-544	21	B-6857	14	B-7682	22
B-2111	8	B-2890	15	B-3947	11	B-5806	29	B-686	14	B-76827	22
2111-79	9	B-2892	15	B-3949	11	B-5806.99	29	B-6861	28	B-7685	14
B-2112	8	B-290 Series	30	B-3961	11	B-5845	29	B-6861.99	28	B-76857	14
B-2116	22	B-2908 Series	31	3961-50	11	B-5855	29	B-68616	28	B-7686	14
B-212	22	B-292 Series	30	B-39617	11	B-58616	29	B-68616.99	28	B-76867	14
B-2250	19	B-293 Series	31	B-39619	11	B-58616.99	29	B-6867	14	805355	27
B-2260	19	B-294 Series	31	B-397	24	B-5891	26	B-687	26	815969	10
B-2280	19	B-297	24	B-398	24	B-6047	25	B-699	14	B-822	7
B-2300	19	B-299	24	B-40	9	B-6107	25	B-6997	14	B-8221	7
B-233	22	B-306	8	B-4063	8	B-6699	14	B-6999	14	B-82216	7
B-240	25	B-318	16	B-4112	8	B-66997	14	B-69997	14	B-8226	7
B-2400	19	B-319586	7	4112-79	9	B-670	23	B-700	32	B-8397	24
B-254	20	B-353	20	B-4262	16	B-6707	23	B-705	33	B-8601	9
B-261	19	B-35303	20	B-4288	13	B-671	23	B-705/E	33	B-922	7
B-262	16	B-354	20	B-4354	20	B-6717	23	B-709	33	B-922-45	7
B-2621	17	B-3541	24	B-4362	16	B-672	22	B-710	33	B-9226	7
B-263	17	B-355	24	B-43644	18	B-6727	22	B-710/E	33	KB100-00-INB	34
B-26607	6	B-359	17	B-4369	10	B-673	23	B-715	32	KB101-00-INB	35
B-26617	6	B-35903	16	B-43699	10	B-6737	23	B-715/E	32	KB102-00-INB	35
B-26627	6	B-3644	18	B-4380	27	B-674	23	B-740	32	KB110-SSRE	34
B-26637	6	367-60	11	B-4388	13	B-6747	23	B-748	32	-INB	
B-270	20	368-60	11	B-4390	27	B-676	23	B-750	33	KB110-SSWM	34
B-272	13	B-369	12	B-43944	10	B-677	22	B-7636	25	-INB	
B-2721	13	B-36903	12	B-43949	10	B-6777	22	B-7671	23	KB150-99-INB	35
B-273	13	B-3699	12					B-76717	23		

SOAP DISPENSERS

TRIMLINE SERIES

LIQUID OR FOAM CARTRIDGE SOAP DISPENSERS



ACCEPTS SOAP CARTRIDGES



DISPENSES BULK SOAP

EASY MAINTENANCE

- Non-proprietary design dispenses any brand of foam or liquid soap
- Interchangeable soap modules can be retrofitted in the field
- Cartridge or bulk-fill lets facility managers choose

FLEXIBLE DESIGN

- Foam or liquid soap models respond to building owner preferences
- 500ml and 1L models for light, medium and heavy-traffic restrooms
- Heavy-duty construction is durable and vandal-resistant

NEW

B-26607 SURFACE MOUNTED LIQUID CARTRIDGE SOAP DISPENSER

Satin-finish stainless steel. Accepts many commercially available liquid soap cartridges or useable as bulk-fill module. Push activated with less than 22.2N (5 lbs of force). Capacity: 500ml (16.9 fl oz). Concealed wall fastening. Hinged housing with key lock and soap refill window. Vandal-resistant.

B-26617 Similar to B-26607, but with 1L (33.8 fl oz) capacity.

Model No.	Unit			
	B-26607		B-26617	
	mm	Inches	mm	Inches
Width	96	3 ¾	96	3 ¾
Height	298	11 ¾	336	13 ¾
Projection	116	4 ⅞	116	4 ⅞
Capacity	500ml	16.9oz	1L	33.8oz

NEW

B-26627 SURFACE MOUNTED FOAM CARTRIDGE SOAP DISPENSER

Satin-finish stainless steel. Accepts many commercially available foam soap cartridges or useable as bulk-fill module. Push activated with less than 22.2N (5 lbs of force). Capacity: 500ml (16.9 fl oz). Concealed wall fastening. Hinged housing with key lock and soap refill window. Vandal-resistant.

B-26637 Similar to B-26627, but with 1L (33.8 fl oz) capacity.

Model No.	Unit			
	B-26627		B-26637	
	mm	Inches	mm	Inches
Width	96	3 ¾	96	3 ¾
Height	298	11 ¾	336	13 ¾
Projection	116	4 ⅞	116	4 ⅞
Capacity	500ml	16.9oz	1L	33.8oz

SOAP DISPENSERS

CONTURA SERIES

B-822 SERIES LAVATORY-MOUNTED SOAP DISPENSER



B-822



B-8221



B-82216



B-8226



TOP-FILLING BASIN MOUNTED SOAP DISPENSERS

- For ease of maintenance and labor savings.
- Vandal-resistant locking cover and free-turning spout.
- Corrosion-resistant.
- Bright-polished spout, cover and escutcheon.
- High-impact-resistant ABS body and shank.
- Shatter-resistant polyethylene container.

SOAP REQUIREMENTS

All Bobrick B-822 Series Soap Dispensers are designed to dispense commercially marketed all-purpose hand soaps including liquid and lotion soaps, synthetic detergents, and antibacterial soaps containing PCMX and/or Triclosan.

SPECIAL DIMENSIONAL NOTE

1. Mount through 25mm (1 in) diameter hole in lavatory or countertop.
2. Diameter of escutcheon: 50mm (2 1/16 in).
3. Maximum height from base of body to bottom of container: 370mm (14 5/8 in) for B-822, B-8226; 210mm (8 1/4 in) for B-8221, B-82216. Allow clearance below basin for 90mm (3 1/2 in) diameter container.
4. Mount so end of spout extends over inner edge of bowl.

FOR DISPENSING LIQUID & LOTION SOAPS, AND SYNTHETIC DETERGENTS

Model Number	Capacity	Spout Length	Maximum Mounting Thickness
B-822	1.0L (34 fl oz)	102mm (4 in)	102mm (4 in)
B-8221	0.6L (20 fl oz)	102mm (4 in)	25mm (1 in)
B-8226	1.0L (34 fl oz)	150mm (6 in)	102mm (4 in)
B-82216	0.6L (20 fl oz)	150mm (6 in)	25mm (1 in)

CONTURA SERIES

B-922 LAVATORY-MOUNTED RESERVOIR SOAP DISPENSER

Model Number	Spout Length
B-922	102mm (4 in)
B-9226	150mm (6 in)

SPECIAL PARTS: B-922-45 ABS End Cap (set of 2 caps) B-319586 Connecting Pipe

UNDER-COUNTER RESERVOIR SOAP SYSTEM

- Eliminates frequent refilling of single soap dispensers, reducing maintenance time and labor costs; check and top-fill from any dispenser.
- Features B-822 Series soap dispensers with 915mm (36 in) long supply tube which can be cut-to-fit in the field.
- Equipped with 255mm (10 in) long, translucent plastic elbow for visible soap level and 840mm (33 in) flexible connector hose which can be cut-to-fit in the field.
- Specify one unit for each basin; each providing 3.3L (0.9 gal) soap capacity, plus capacity of pipe connections.



SOAP DISPENSERS



CONTURA SERIES

B-4112 SURFACE MOUNTED SOAP DISPENSER

Corrosion-resistant valve dispenses commercially marketed all-purpose hand soaps. Container is satin-finish stainless steel. Capacity: 1.2L (40 fl oz). Soap refill window. Concealed wall fastening. Hinged filler-top requires special key to open. Vandal-resistant.

B-4112	Unit	
	mm	Inches
Width	180	7
Height	155	6 1/8
Depth Wall to Pushbutton	85	3 5/16
Barrier-Free Mounting Height	1245	49



CONTURA SERIES

B-4063 RECESSED SOAP DISPENSER

Corrosion-resistant valve dispenses commercially marketed all-purpose hand soaps. Front of dispenser drawn, 1.0mm (20-gauge), one-piece, satin-finish stainless steel with covered, plastic soap vessel attached to back. Capacity: 1.5L (50 fl oz). Pulls out for filling and maintenance. Concealed locking device. Vandal resistant. Soap refill window.

B-4063	Unit		Wall Opening	
	mm	Inches	mm	Inches
Width	185	7 1/4	150	5 7/8
Height	160	6 3/8	140	5 1/2
Recess	100	3 7/8	102	4
Projection Wall to Pushbutton	40	1 5/8	N/A	
Barrier-Free Mtg. Ht.	1245	49	1230	48 1/2



TRIMLINE SERIES

B-306 RECESSED SOAP DISPENSER

Satin-finish stainless steel. Door has 90° return, conceals flange. Enclosed plastic soap vessel on back of door swings open for easy filling. Full-length hinge and tumbler lock secure door to cabinet. Capacity: 1.3L (45 fl oz). Corrosion-resistant valve dispenses commercially marketed all-purpose hand soaps. Soap refill window.

B-306	Unit		Wall Opening	
	mm	Inches	mm	Inches
Width	240	9 1/2	215	8 3/8
Height	140	5 1/2	110	4 3/8
Recess	95	3 13/16	100	3 7/8
Projection Wall to Pushbutton	75	3	N/A	
Barrier-Free Mtg. Ht.	1215	47 3/4	1195	47



CLASSIC SERIES

B-2111 SURFACE MOUNTED SOAP DISPENSER

Vertical tank is satin-finish stainless steel. Corrosion-resistant valve dispenses commercially marketed all-purpose hand soaps. Capacity: 1.2L (40 fl oz). Soap refill window. Concealed wall fastening. Hinged filler-top requires special key to open. Vandal resistant.

B-2111	Unit	
	mm	Inches
Width	120	4 3/4
Height	205	8 1/8
Depth Wall to Pushbutton	90	3 1/2
Barrier-Free Mounting Height	1290	50 7/8



CLASSIC SERIES

B-2112 SURFACE MOUNTED SOAP DISPENSER

Horizontal tank is satin-finish stainless steel. Corrosion-resistant valve dispenses commercially marketed all-purpose hand soaps. Capacity: 1.2L (40 fl oz). Soap refill window. Concealed wall fastening. Hinged filler-top requires special key to open. Vandal resistant.

B-2112	Unit	
	mm	Inches
Width	205	8 1/8
Height	120	4 3/4
Depth Wall to Pushbutton	90	3 1/2
Barrier-Free Mounting Height	1205	47 1/2

NOTES: Bobrick stainless steel soap dispensers are not designed to dispense alcohol-based hand sanitizers or iodine-based surgical soaps. To help prevent corrosion and extend the service life of B-2111, B-2112, B-4112, and B-4063 soap dispensers, liquid soaps should be chloride-free and pH-neutral.

SOAP DISPENSERS



CLASSIC SERIES

B-132 SURFACE MOUNTED POWDER SOAP DISPENSER

Container is satin-finish stainless steel. Capacity: 0.9L (32 fl oz). Dispensing mechanism with stainless steel lever dispenses any free-flowing powdered soap. Agitator spring prevents soap build-up. Top opens with special key provided. Concealed wall fastening.

B-132	Unit	
	mm	Inches
Width	120	4 ¹³ / ₁₆
Height	205	8 ¹ / ₈
Depth Wall to Lever	100	3 ⁷ / ₈
Barrier-Free Mounting Height	1285	50 ⁵ / ₈



CLASSIC SERIES

B-40 SURFACE MOUNTED SOAP DISPENSER

Two-tone styling in black and grey. Corrosion-resistant valve dispenses commercially marketed all-purpose hand soaps. Vandal-resistant lid has unique keyless locking device. Lid pivots up after lock is disengaged for easy top filling. Large-capacity, translucent container provides visible soap level. Capacity: 1.2L (40 fl oz). Concealed wall fastening. Unit is removable from wall for cleaning.

B-40	Unit	
	mm	Inches
Width	150	5 ¹³ / ₁₆
Height	175	6 ⁷ / ₈
Depth Wall to Pushbutton	80	3 ³ / ₁₆
Barrier-Free Mounting Height	1270	50



CLASSIC SERIES

B-155 SURFACE MOUNTED LIQUIDMATE® SOAP DISPENSER

Bright-polished, chrome-plated ABS mounting bracket. Corrosion-resistant valve dispenses thin, free-flowing commercially marketed all-purpose hand soaps. Translucent polyethylene container provides visible soap level. 0.7L (24 fl oz) capacity.

B-155	Unit	
	mm	Inches
Width	102	4
Height	195	7 ⁵ / ₈
Depth	105	4 ¹ / ₈
Wall to Pushbutton	70	2 ³ / ₄
Barrier-Free Mounting Height	1285	50 ¹ / ₂



B-8601 PANEL MOUNTED SOAP DISPENSER

Corrosion-resistant valve mounts into 18mm (²/₃₂ in) diameter hole through 32 to 51mm (1¹/₄–2 in) thick panel; projects 85mm (3¹/₄ in). Dispenses liquid and lotion soaps, and synthetic detergents. Translucent, shatter-resistant polyethylene container mounts on opposite side of panel and feeds soap valve through supply tube. Capacity: 1.0L (34 fl oz).



2111-79 SUREFLO® RETROFIT SOAP VALVE

For Models B-2111 and B-306. Valve operates with less than 22.2N (5 lbs of force).



4112-79 RETROFIT ALL-PURPOSE SOAP VALVE

Available for Models B-4063, B-4112, B-2111, and B-2112. Field-replaceable corrosion-resistant valve dispenses commercially marketed all-purpose hand soaps. Valve operates with less than 22.2N (5 lbs of force).

COMBINATION TOWEL/WASTE UNITS



CONTURA SERIES

B-43944 RECESSED PAPER TOWEL DISPENSER/WASTE RECEPTACLE

Satin-finish stainless steel. Flush tumbler lock. Dispenses 600 C-fold or 800 multifold towels. Waste receptacle has 53.7L (14.2 gal) capacity. Removable front panel for easy cleaning.

B-43949 Similar to B-43944, but with stainless steel skirt for surface mounting.

Model No.	Unit				Wall Opening	
	B-43944		B-43949		B-43944	
	mm	Inches	mm	Inches	mm	Inches
Width	445	17 7/16	445	17 7/16	405	16
Height	1430	56 3/4	1430	56 3/8	1390	54 3/4
Recess	100	3 15/16	N/A		102	4
Projection	130	5 1/8	230	9 1/8	N/A	
Typical Mtg. Ht.	1700-1880	67-74	1700-1880	67-74	1675-1855	66-73
Barrier-Free Mtg. Ht.	1555	60 3/4	1555	61 1/4	1530	60 1/4



CONTURA SERIES

B-4369 RECESSED PAPER TOWEL DISPENSER/WASTE RECEPTACLE

Satin-finish stainless steel. Flush tumbler lock. Dispenses 350 C-fold or 475 multifold towels. Waste receptacle has 9.8L (2.6 gal) capacity. Removable front panel for easy cleaning.

B-43699 Similar to B-4369, but with stainless steel skirt for surface mounting.

Model No.	Unit				Wall Opening	
	B-4369		B-43699		B-4369	
	mm	Inches	mm	Inches	mm	Inches
Width	325	12 3/4	325	12 7/8	290	11 5/8
Height	710	28	715	28 1/8	675	26 5/8
Recess	100	3 15/16	N/A		102	4
Projection	65	2 1/2	170	6 5/8	N/A	
Typical Mounting Height	1805	71	1805	71	1780	70
Barrier-Free Mounting Height	1340	52 3/4	1340	52 3/4	1315	51 3/4



TRIMLINE SERIES

B-3803 RECESSED PAPER TOWEL DISPENSER/WASTE RECEPTACLE

Satin-finish stainless steel. Door has 90° return, conceals flange. Dispenses 600 C-fold, 800 multifold or 1100 single-fold towels. Removable, leak-proof, 24L (6.3 gal) waste container.

B-38032 Similar to B-3803, but with 51mm (2 in) stainless steel skirt for semi-recessing.

3803-100 CONVERSION KIT
Adds cover to waste receptacle on models B-3803 and B-38032 only.

B-38034 Similar to B-3803, but only dispenses C-fold and multifold towels. Waste capacity: 14.4L (3.8 gal).

B-380349 Similar to B-38034, but with stainless steel skirt for surface mounting.

Model No.	Unit				Wall Opening			
	B-3803		B-38034		B-3803		B-38034	
	mm	Inches	mm	Inches	mm	Inches	mm	Inches
Width	330	13	330	13	290	11 1/2	290	11 1/2
Height	1400	55 1/8	1400	55 1/8	1360	53 5/8	1360	53 5/8
Recess	140	5 5/8	90	3 5/8	145	5 3/4	95	3 3/4
Projection	14	9/16	14	9/16	N/A		N/A	
Typical Mtg. Ht.	1700-1880	67-74	1700-1880	67-74	1675-1855	66-73	1675-1855	66-73
Barrier-Free Mtg. Ht.	1545	60 3/4	1545	60 3/4	1520	59 3/4	1520	59 3/4



TRIMLINE SERIES

B-38033 RECESSED PAPER TOWEL DISPENSER/AUTOMATIC HAND DRYER/WASTE RECEPTACLE

Satin-finish stainless steel. Door has 90° return, conceals flange. Dispenses 450 C-fold, 600 multifold or 850 single-fold towels. Removable leak-proof, 12.5L (3.3 gal) waste container. Hand dryer: 220-240V AC, 7 Amp., 1500-1700 Watts, 50/60 Hz, Single Phase, VDE approved, CE marked and CCC approved.

B15969 Similar to B-38033, but unit is narrower and taller.

Model No.	Unit				Wall Opening			
	B-38033		815969		B-38033		815969	
	mm	Inches	mm	Inches	mm	Inches	mm	Inches
Width	385	15 1/8	330	13	350	13 3/4	290	11 1/2
Height	1415	55 3/4	1830	72	1380	54 3/8	1795	70 5/8
Recess	140	5 5/8	145	5 5/8	145	5 3/4	145	5 3/4
Projection	14	9/16	14	9/16	N/A		N/A	
Typical Mtg. Ht.	1930-2185	76-86	2080-2260	80-90	1905-2160	75-85	2005-2260	79-89
Barrier-Free Mtg. Ht.	1545	60 3/4	1740	68 1/2	1520	59 3/4	1740	67 1/2

COMBINATION TOWEL/WASTE UNITS



CLASSIC SERIES

B-3944 RECESSED CONVERTIBLE PAPER TOWEL DISPENSER/WASTE RECEPTACLE

Unit includes convertible folded paper towel module and 45.4L waste receptacle module which can be interchanged with a universal touch-free roll towel module and 68.1L waste receptacle module, respectively. Cabinet is not replaced when changing modules. Satin-finish stainless steel. Seamless beveled flange. Dispenses 600 C-fold or 800 multifold towels. Removable waste receptacle is locked into cabinet. Receptacle is 203mm (8 in) deep with capacity of 45.4L (12 gal).

B-3942 Similar to B-3944, but with a 51mm (2 in) stainless steel skirt for semi-recessed mounting.

B-3947 Similar to B-3944, but with 68.1L (18 gal) waste receptacle.

B-3949 Similar to B-3944, but with a stainless steel skirt for surface mounting.



CLASSIC SERIES

B-3961 RECESSED CONVERTIBLE PAPER TOWEL DISPENSER/WASTE RECEPTACLE

Unit includes convertible universal, touch-free roll towel module and 45.4L waste receptacle module which can be interchanged with a folded towel module and 68.1L waste receptacle module, respectively. Cabinet is not replaced when changing modules. Satin-finish stainless steel. Seamless beveled flange. Touch-free, pull-towel mechanism dispenses 305mm (12 in) length per pull of economical, non-perforated, universal roll paper towels. Accommodates 205mm (8 in) wide, up to 205mm (8 in) diameter rolls, 244m (800 ft) long, plus 90mm (3½ in) diameter stub roll with automatic transfer. Removable waste receptacle is locked into cabinet. Receptacle is 203mm (8 in) deep with capacity of 45.4L (12 gal).

B-39617 Similar to B-3961, but with 68.1L (18 gal) waste receptacle.

B-39619 Similar to B-3961, but with a stainless steel skirt for surface mounting.

Model No.	Unit								Wall Opening			
	B-3944		B-3942		B-3949		B-3947		B-3944/B-3947		B-3942	
	mm	Inches	mm	Inches	mm	Inches	mm	Inches	mm	Inches	mm	Inches
Width	437	17 ³ / ₁₆	443	17 ⁷ / ₁₆	443	17 ¹ / ₁₆	437	17 ³ / ₁₆	406	16	406	16
Height	1422	56	1429	56 ¹ / ₄	1429	56 ¹ / ₄	1422	56	1391	56 ³ / ₄	1391	56 ³ / ₄
Recess	102	4	50	2	N/A	102	4	102	4	50	2	
Projection	105	4 ¹ / ₈	160	6 ⁵ / ₁₆	205	8 ¹ / ₁₆	208	8 ³ / ₁₆	N/A			
Typical Mtg. Ht.	1702-1880	67-74	1702-1880	67-74	1676-1854	66-73	1702-1880	67-74	1676-1854	66-73	1676-1854	66-73
Barrier-Free Mtg. Ht.	1537	60 ¹ / ₂	1537	60 ¹ / ₂	1511	59 ¹ / ₂	1537	60 ¹ / ₂	1511	59 ¹ / ₂	1511	59 ¹ / ₂

Model No.	Unit						Wall Opening			
	B-3961		B-39617		B-39619		B-3961		B-39617	
	mm	Inches	mm	Inches	mm	Inches	mm	Inches	mm	Inches
Width	437	17 ³ / ₁₆	437	17 ³ / ₁₆	445	17 ¹ / ₂	406	16	406	16
Height	1422	56	1422	56	1430	56 ⁵ / ₁₆	1391	54 ³ / ₄	1391	54 ³ / ₄
Recess	100	3 ¹⁵ / ₁₆	100	3 ¹⁵ / ₁₆	N/A	102	4	102	4	
Projection	130	5 ¹ / ₈	203	8	210	8 ¹ / ₄	N/A			
Typical Mtg. Ht.	1702-1880	67-74	1702-1880	67-74	1673-1699	65 ¹ / ₈ -66 ⁷ / ₈	1676-1854	66-73	1676-1854	66-73
Barrier-Free Mtg. Ht.	1537	60 ¹ / ₂	1537	60 ¹ / ₂	1508	59 ³ / ₈	1511	59 ¹ / ₂	1511	59 ¹ / ₂

INTERCHANGEABLE MODULES



3961-50 Convertible touch-free, pull-towel universal roll towel dispenser module is interchangeable with folded towel dispenser module.



3944-52 Convertible folded towel dispenser module is interchangeable with touch-free, pull-towel universal roll towel dispenser module.



367-60 Interchangeable 45.4L waste receptacle module.



367-60 Interchangeable 45.4L waste receptacle module.



368-60 Interchangeable 68.1L waste receptacle module.



368-60 Interchangeable 68.1L waste receptacle module.



COMBINATION TOWEL/WASTE UNITS



TRIMLINE SERIES

B-39003 RECESSED PAPER TOWEL DISPENSER/WASTE RECEPTACLE

Satin-finish stainless steel. Door has 90° return, conceals flange. Dispenses 600 C-fold, 800 multifold or 1100 single-fold towels. Removable leak-proof, 45.4L (12 gal) waste container.

B-39003	Unit		Wall Opening	
	mm	Inches	mm	Inches
Width	435	17 3/16	405	16
Height	1420	56	1390	54 3/4
Recess	195	7 5/8	200	7 7/8
Projection	14	9/16	N/A	
Typical Mtg. Ht.	1700-1880	67-74	1675-1855	66-73
Barrier-Free Mtg. Ht.	1535	60 1/2	1510	59 1/2



TRIMLINE SERIES

B-36903 RECESSED PAPER TOWEL DISPENSER/WASTE RECEPTACLE

Satin-finish stainless steel. Door has 90° return, conceals flange. Dispenses 300 C-fold or 400 multifold towels. Removable, leak-proof, 6.1L (1.6 gal) waste container. Cabinet does not lock.

B-36903	Unit		Wall Opening	
	mm	Inches	mm	Inches
Width	330	13	290	11 1/2
Height	790	31 1/8	750	29 1/2
Recess	90	3 5/8	95	3 3/4
Projection	14	9/16	N/A	
Typical Mtg. Ht.	1755	69	1725	68
Barrier-Free Mtg. Ht.	1295	51	1270	50



CLASSIC SERIES

B-369 RECESSED PAPER TOWEL DISPENSER/WASTE RECEPTACLE

Satin-finish stainless steel. Seamless beveled flange. Dispenses 350 C-fold or 475 multifold towels. Knob-latch retains door. Removable waste container has 7.6L (2 gal) capacity.

B-3699 Similar to B-369, but with stainless steel skirt for surface mounting.

Model No.	Unit				Wall Opening	
	B-369		B-3699		B-369	
	mm	Inches	mm	Inches	mm	Inches
Width	355	14	360	14 1/4	320	12 5/8
Height	710	28	720	28 5/16	675	26 5/8
Recess	100	3 15/16	N/A		102	4
Projection	5	3/16	110	4 1/4	N/A	
Typical Mounting Height	1880	74	1805	71	1855	73
Barrier-Free Mounting Height	1310	51 1/2	1310	51 1/2	1285	50 1/2

TOILET TISSUE DISPENSERS



CONTURA SERIES

B-4288 SURFACE MOUNTED MULTI-ROLL TOILET TISSUE DISPENSER

Satin-finish stainless steel unit with stainless steel dispensing mechanism. Flush tumbler lock. Holds two rolls up to 133mm (5¼ in) diameter (1800 sheets). Extra roll automatically drops in place when bottom roll is depleted. Theft-resistant, heavy-duty one-piece molded plastic spindles.

B-4288	Unit	
	mm	Inches
Width	155	6 1/16
Height	280	11
Depth	150	5 15/16
Typical Mtg. Ht.	710–915	28–36
Barrier-Free Mtg. Ht.	710	28



CONTURA SERIES

B-4388 RECESSED MULTI-ROLL TOILET TISSUE DISPENSER

Satin-finish stainless steel unit with stainless steel dispensing mechanism. Flush tumbler lock. Holds two rolls up to 133mm (5¼ in) diameter (1800 sheets). Extra roll automatically drops in place when bottom roll is depleted. Theft-resistant, heavy-duty spindles.

B-4388	Unit		Wall Opening	
	mm	Inches	mm	Inches
Width	190	7 9/16	160	6 1/4
Height	320	12 1/2	285	11 1/4
Recess	80	3 3/16	85	3 1/4
Projection	70	2 3/4	N/A	
Typical Mtg. Ht.	730–935	28 3/4–36 3/4	710–915	28–36
Barrier-Free Mtg. Ht.	730	28 3/4	710	28



CLASSIC SERIES

B-2888 SURFACE MOUNTED MULTI-ROLL TOILET TISSUE DISPENSER

Satin-finish stainless steel unit with stainless steel dispensing mechanism. Door has flat face with protruding tumbler lock. Holds two rolls up to 133mm (5¼ in) diameter (1800 sheets). Extra roll automatically drops in place when bottom roll is depleted. Theft-resistant, heavy-duty spindles.

B-2888	Unit	
	mm	Inches
Width	155	6 1/16
Height	280	11
Depth	150	5 15/16
Typical Mtg. Ht.	710–915	28–36
Barrier-Free Mtg. Ht.	710	28



CLASSIC SERIES

B-3888 RECESSED MULTI-ROLL TOILET TISSUE DISPENSER

Satin-finish stainless steel unit with stainless steel dispensing mechanism. Door has flat face with protruding tumbler lock. Holds two rolls up to 133mm (5¼ in) diameter (1800 sheets). Extra roll automatically drops in place when bottom roll is depleted. Theft-resistant, heavy-duty spindles.

B-3888	Unit		Wall Opening	
	mm	Inches	mm	Inches
Width	190	7 9/16	160	6 1/4
Height	320	12 1/2	285	11 1/4
Depth	80	3 3/16	85	3 1/4
Recess	70	2 3/4	N/A	
Typical Mtg. Ht.	730–935	28 3/4–36 3/4	710–915	28–36
Barrier-Free Mtg. Ht.	730	28 3/4	710	28



CLASSIC SERIES

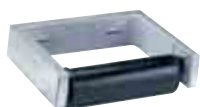
B-272 SURFACE MOUNTED TOILET TISSUE CABINET

Satin-finish stainless steel. Equipped with tumbler lock; vandal-resistant. Dispenses either single- or doublefold toilet tissue. Large capacity: 1330 singlefold tissues. Slots in cabinet indicate refill time. May be refilled with full standard pack before dispenser is empty.

B-2721 Similar to B-272, with larger cabinet (for Europe).

NOTE: Check for paper availability.

Model No.	Unit			
	B-272		B-2721	
	mm	Inches	mm	Inches
Width	125	5	130	5 1/16
Height	225	8 15/16	230	9 1/16
Depth	75	3	110	4 5/16
Typical Mounting Height	710	28	710	28



B-273

CLASSIC SERIES

B-273 SURFACE MOUNTED TOILET TISSUE DISPENSER

Heavy-duty cast aluminum, satin finish. High-impact plastic spindles have concealed locking device; theft-resistant. Holds one roll up to 150mm (6 in) diameter (2000 sheets). Controlled delivery.

B-2730 Similar to B-273, with no controlled delivery.

B-274 Similar to B-273, holds two rolls. Controlled delivery.

B-2740 Similar to B-274, with no controlled delivery.

Model No.	Unit			
	B-273		B-274	
	mm	Inches	mm	Inches
Width	165	6 1/2	320	12 1/2
Height	40	1 1/2	40	1 1/2
Depth	125	4 7/8	125	4 7/8
Typical Mounting Height	500	19 3/4	500	19 3/4



B-274



TOILET TISSUE DISPENSERS



CLASSIC SERIES

B-386 PARTITION MOUNTED MULTI ROLL TOILET TISSUE DISPENSER (SERVES TWO TOILET COMPARTMENTS)

Satin-finish stainless steel. Mounts centered through toilet partitions, 12 to 50mm (1/2–2 in) thick; used from both sides. Holds four standard core toilet tissue rolls up to 130mm (5 1/8 in) diameter; two for each side. Chrome plated plastic spindles with heavy duty internal springs.

B-386	Unit		Part. Opening	
	mm	Inches	mm	Inches
Width	324	12 3/4	292	11 1/2
Height	306	12 1/16	276	10 7/8
Partition Thickness	12–50	1/2–2	N/A	
Projection	19–44	3/4–1 3/4	N/A	
Typical Mtg. Ht.	933	36 3/4	914	36
Barrier-Free Mtg. Ht.	718	28 1/4	699	27 1/2



B-6699 SURFACE MOUNTED TOILET TISSUE DISPENSER WITH HOOD

Bright-polished stainless steel. Hood protects paper. Chrome plated plastic spindle holds rolls up to 130mm (5 1/8 in) diameter (1500 sheets).

B-66997 Similar to B-6699, but with satin finish.

B-6699	Unit	
	mm	Inches
Width	155	6 3/16
Height	155	6 3/16
Depth	120	4 3/4
Typical Mounting Height	560	22



B-6999 SURFACE MOUNTED TOILET TISSUE DISPENSER WITH HOOD FOR TWO ROLLS

Bright-polished stainless steel. Hoods protect paper. Chrome-plated plastic spindles hold rolls up to 130mm (5 1/8 in) diameter (1500 sheets).

B-69997 Similar to B-6999, but with satin finish.

B-6999	Unit	
	mm	Inches
Width	315	12 3/8
Height	155	6 3/16
Depth	120	4 3/4
Typical Mounting Height	560	22



B-699 RECESSED TOILET TISSUE DISPENSER WITH HOOD FOR TWO ROLLS

Bright-polished stainless steel. Hoods protect paper. Chrome-plated plastic spindles hold rolls up to 130mm (5 1/8 in) diameter (1500 sheets).

B-6997 Similar to B-699, but with satin finish.

B-699	Unit		Wall Opening	
	mm	Inches	mm	Inches
Width	315	12 5/16	300	11 3/4
Height	155	6 3/16	135	5 1/4
Recess	50	1 7/8	85	3 3/8
Projection	70	2 3/4	N/A	
Typical Mounting Height	560	22	545	21 1/2



B-685 SURFACE MOUNTED TOILET TISSUE DISPENSER FOR SINGLE ROLL

Bright-polished stainless steel. Support arm flanges lock to concealed stainless steel wall plate. Chrome-plated plastic spindle holds rolls up to 140mm (5 1/2 in) diameter (1800 sheets).

B-6857 Similar to B-685, but with satin finish.

B-7685 Similar to B-685.

B-76857 Similar to B-7685, but with satin finish.

B-685	Unit	
	mm	Inches
Width	185	7 1/4
Height	50	2
Depth	100	3 15/16
Typical Mounting Height	500	19 3/4



B-686 SURFACE MOUNTED TOILET TISSUE DISPENSER FOR TWO ROLLS

Bright-polished stainless steel. Support arm flanges lock to concealed stainless steel wall plate. Chrome-plated plastic spindles hold rolls up to 140mm (5 1/2 in) diameter (1800 sheets).

B-6867 Similar to B-686, but with satin finish.

B-7686 Similar to B-686.

B-76867 Similar to B-7686, but with satin finish.

B-686	Unit	
	mm	Inches
Width	320	12 1/2
Height	50	2
Depth	100	3 15/16
Typical Mounting Height	500	19 3/4

TOILET TISSUE DISPENSERS



NEW
B-541 SPARE TOILET ROLL HOLDER

Satin-finish stainless steel. Threaded flange conceals mounting plate, provides snug fit to the wall. Vertical post accommodates one roll up to 127mm (5 in) diameter and a core size from 19mm (¾ in) to 38mm (1½ in). Member of the Cubicle Collection, please see page 21 for more information.

B-541	Unit	
	mm	Inches
Flange Width	49	1 15/16
Height	202	7 31/32
Depth	88	3 15/32



NEW
B-543 SURFACE MOUNTED TOILET TISSUE DISPENSER FOR SINGLE ROLL

Satin-finish stainless steel. Threaded flange conceals mounting plate, provides snug fit to the wall. Accepts standard-core size from 19mm (¾ in) up to 38mm (1½ in) and 102mm (4 in) wide. Set screw in post prevents vandalism. Member of the Cubicle Collection, please see page 21 for more information.

B-543	Unit	
	mm	Inches
Width	140	5 ½
Height	115	4 17/32
Depth	33	1 5/16
Typical Mounting Height	597	23 ½



CLASSIC SERIES
B-27313 SURFACE MOUNTED THREE ROLL TOILET TISSUE DISPENSER

Satin-finish stainless steel. Holds 3 standard-core toilet tissue rolls up to 114mm (4½ in) diameter. Extra rolls drop into place when bottom roll is finished.

B-27313	Unit	
	mm	Inches
Width	117	4 5/8
Height	378	14 7/8
Depth	127	5
Typical Mtg. Ht.	710–915	28–36
Barrier-Free Mtg. Ht.	710	28



B-2890 SURFACE MOUNTED SINGLE JUMBO-ROLL TOILET TISSUE DISPENSER

Satin-finish stainless steel. Equipped with spring lock. Spindle holds one 255mm (10 in) diameter roll with 75mm (3 in) diameter core. Convertible for 55mm (2¼ in) and 40mm (1½ in) diameter core rolls. Powder-coated mounting plate. Slot in door reveals tissue supply.

B-2890	Unit	
	mm	Inches
Diameter	270	10 5/8
Depth	115	4 ½
Typical Mounting Height	750	29 ½



B-2892 SURFACE MOUNTED TWIN JUMBO-ROLL TOILET TISSUE DISPENSER

Satin-finish stainless steel. Equipped with tumbler lock. Spindles hold two 255mm (10 in) diameter rolls with 55mm (2¼ in) diameter core rolls; convertible for 75mm (3 in) diameter core rolls. Sliding access panel exposes one roll at a time, allows easy roll change-over. Wide viewing slot in door. Quick reloading.

B-2892	Unit	
	mm	Inches
Width	530	20 13/16
Height	290	11 3/8
Depth	135	5 5/16
Typical Mounting Height	760	30



For Models B-386, B-685, B-686, B-699, B-6699, B-6857, B-6867, B-6997, B-6999, B-7685, B-7686, B-66997, B-69997, B-76857, or B-76867.

283-604 THEFT-RESISTANT SPINDLE

Molded plastic spindle with concealed locking feature is available as an option or replacement part for Bobrick surface mounted and recessed toilet tissue dispensers. After rolls are depleted, spindle is removed with special key furnished; theft-resistant.

NOTE: Theft-resistant spindle(s) is(are) inter-changeable on all models which use the 283-504 chrome-plated plastic spindle.



For Models B-273, B-274, B-2730, or B-2740.

2733-103 THEFT-RESISTANT SPINDLE

Molded plastic spindle suitable for European cores 42mm (1½ in) is available as a new or replacement part.

NOTE: The units that are designed for controlled delivery use the same spindle as those without this feature. Changing the spindle does not change the unit to controlled or non-controlled.



PAPER TOWEL DISPENSERS

CONTURA SERIES



B-4262 SURFACE MOUNTED PAPER TOWEL DISPENSER

Satin-finish stainless steel. Top of cabinet equipped with tumbler lock. Door swings down for loading towels. Dispenses 400 C-fold or 525 multifold towels measuring 79 to 97mm (3 1/8–3 13/16 in) deep without adjustment or adapter. Furnished with internal towel tray adapter kit for dispensing narrower towels 64 to 79mm (2 1/2–3 1/8 in) deep. Cabinet slots indicate refill time.

B-4262	Unit	
	mm	Inches
Width	275	10 13/16
Height	335	13 1/4
Depth	120	4 1/16
Typical Mtg. Ht.	1675–1780	66–70
Barrier-Free Mtg. Ht.	1320	52



CONTURA SERIES

B-4362 RECESSED PAPER TOWEL DISPENSER

Satin-finish stainless steel. Flush tumbler lock. Dispenses 600 C-fold or 800 multifold towels.

B-4362	Unit		Wall Opening	
	mm	Inches	mm	Inches
Width	325	12 3/4	290	11 3/8
Height	710	28	675	26 1/2
Recess	100	3 15/16	102	4
Projection	35	1 7/16	N/A	
Typical Mtg. Ht.	1980	78	1955	77
Barrier-Free Mtg. Ht.	1510	59 1/2	1485	58 1/2



TRIMLINE SERIES

B-318 CONCEALED PAPER TOWEL DISPENSER

Satin-finish stainless steel. Dispenses 600 C-fold or 800 multifold towels. Towels load into bottom of cabinet concealed behind wall or mirror; only the towel tray is visible. Add 150mm (6 in) to wall opening to provide minimum clearance space below towel tray. Add thickness of wall finish to wall opening depth.

B-318	Unit		Wall Opening	
	mm	Inches	mm	Inches
Width	290	11 7/16	305	12
Height	455	18	465	18 1/4
Recess	110	4 5/16	115	4 1/2
Typical Mtg. Ht.	1725–1885	68–73	1725–1855	68–73
Barrier-Free Mtg. Ht.	1440	56 3/4	1440	56 3/4



TRIMLINE SERIES

B-526 COUNTERTOP MOUNTED RECESSED PAPER TOWEL DISPENSER

Satin-finish stainless steel. Flange has 90° return. Towels load into top of dispenser. Dispenses 300 C-fold or multifold towels. Mounts in countertops 19 to 38mm (3/4–1 1/2 in) thick. Housing below countertop to conceal dispenser is not included.

B-526	Unit		Countertop Opening	
	mm	Inches	mm	Inches
Width	325	12 3/4	310	12 1/4
Height	150	6	115	4 1/2
Recess	280	11 1/16	430	17
Projection	6	1/4	N/A	



TRIMLINE SERIES

B-35903 RECESSED PAPER TOWEL DISPENSER

Satin-finish stainless steel. Door has 90° return, conceals flange. Dispenses 300 C-fold or 400 multifold towels. Cabinet does not lock.

B-35903	Unit		Wall Opening	
	mm	Inches	mm	Inches
Width	330	13	290	11 1/2
Height	480	18 15/16	440	17 1/4
Recess	90	3 5/8	95	3 3/4
Projection	14	9/16	N/A	
Typical Mtg. Ht.	1700	67	1675	66
Barrier-Free Mtg. Ht.	1320	52	1295	51



CLASSIC SERIES

B-262 SURFACE MOUNTED PAPER TOWEL DISPENSER

Satin-finish stainless steel. Dispenses 400 C-fold or 525 multifold towels measuring 79 to 97mm (3 1/8–3 13/16 in) deep without adjustment or adapters. Door has tumbler lock and piano-hinge. Cabinet slots indicate refill time.

B-262	Unit	
	mm	Inches
Width	275	10 3/4
Height	355	14
Depth	102	4
Typical Mtg. Ht.	1675–1780	66–70
Barrier-Free Mtg. Ht.	1370	54

PAPER TOWEL DISPENSERS



CLASSIC SERIES

B-2621 SURFACE MOUNTED PAPER TOWEL DISPENSER

Satin-finish stainless steel. Dispenses 200 C-fold or 275 multifold towels. Door has knob-latch.

	Unit	
	mm	Inches
Width	275	10 ¾
Height	180	7 ½
Depth	102	4
Typical Mtg. Ht.	1475–1575	58–62
Barrier-Free Mtg. Ht.	1195	47



CLASSIC SERIES

B-263 SURFACE MOUNTED PAPER TOWEL DISPENSER

Satin-finish stainless steel. Top of cabinet equipped with tumbler lock. Dispenses 400 single-fold towels. Cabinet slots indicate refill time.

	Unit	
	mm	Inches
Width	310	12 ¼
Height	185	7 ¼
Depth	155	6 ½
Typical Mtg. Ht.	1675–1780	66–70
Barrier-Free Mtg. Ht.	1195	47



CLASSIC SERIES

B-2860 SURFACE MOUNTED ROLL PAPER TOWEL DISPENSER

Satin-finish stainless steel. Touch-free pull towel mechanism dispenses 305mm (12 in) length of economical, non-perforated, universal roll paper towels. Accommodates 205mm (8 in) wide, up to 205mm (8 in) diameter rolls, 244m (800 ft) long, plus 90mm (3 ½ in) diameter stub roll with automatic transfer. Pull force to operate 8.0N (1.8 lbs). Door has tumbler lock and piano-hinge. Cabinet slots indicate refill time.

	Unit	
	mm	Inches
Width	300	11 ¾
Height	380	15
Depth	230	9
Typical Mtg. Ht.	1700–1880	67–74
Barrier-Free Mtg. Ht.	1525–1675	60–66



CLASSIC SERIES

B-359 RECESSED PAPER TOWEL DISPENSER

Satin-finish stainless steel. Seamless beveled flange. Dispenses 350 C-fold or 475 multifold towels. Door equipped with full-length stainless steel piano-hinge at bottom; swings down for easy filling.

	Unit		Wall Opening	
	mm	Inches	mm	Inches
Width	325	12 ¾	285	11 ¼
Height	435	17 ¾	395	15 ¾
Recess	102	4	102	4
Projection	5	¾	N/A	
Typical Mtg. Ht.	1700	67	1675	66
Barrier-Free Mtg. Ht.	1335	52 ½	1310	57 ½



WASTE RECEPTACLES



CONTURA SERIES

B-277 SURFACE MOUNTED WASTE RECEPTACLE

Satin-finish stainless steel. Capacity: 48.3L (12.8 gal). Top edges are hemmed and bottom of waste receptacle has recessed finger grip for safe handling.

B-277	Unit	
	mm	Inches
Width	385	15 1/8
Height	585	23
Depth	215	8 1/2
Typical Mounting Height	610–915	24–36



CONTURA SERIES

B-43644 RECESSED WASTE RECEPTACLE

Satin-finish stainless steel. Removable front panel for easy cleaning. Capacity: 42.4L (11.2 gal).

B-43644	Unit		Wall Opening	
	mm	Inches	mm	Inches
Width	440	17 5/16	405	15 7/8
Height	705	27 3/4	665	26 1/4
Recess	100	3 7/8	102	4
Projection	130	5 1/8	N/A	
Typical Mounting Height	1090–1195	43–47	1040–1145	41–45



TRIMLINE SERIES

B-527 RECESSED COUNTERTOP WASTE-DISPOSAL DOOR

Satin-finish stainless steel. Door is self-closing. Flange has 90° return. Mounts in countertops 19 to 38mm (3/4–1 1/2 in) thick. 115mm (4 1/2 in) minimum clearance below mounting surface is required. Waste receptacle and housing below countertop to conceal receptacle are not included.

B-527	Unit		Countertop Opening	
	mm	Inches	mm	Inches
Width	325	12 3/4	285	11 1/4
Height	150	6	115	4 1/2
Recess	52	2 1/16	115	4 1/2
Projection	6	1/4	N/A	
Typical Mounting Height	865	34	865	34



TRIMLINE SERIES

B-532 CIRCULAR WASTE CHUTE

Satin-finish stainless steel. Flat flange suitable for countertop, recessed, or under-counter installation. Provides access to under counter waste receptacle (not included).

B-529 CIRCULAR WASTE CHUTE

Bright-polished stainless steel. Rolled flange. Provides access to under counter waste receptacle (not included).

Model No.	Unit				Countertop Opening			
	B-532		B-529		B-532		B-529	
	mm	Inches	mm	Inches	mm	Inches	mm	Inches
Outer Dia.	173	6 3/4	176	6 15/16	N/A	N/A	N/A	N/A
Inner Dia.	151	5 15/16	140	5 1/2	155	6 1/8	140	5 5/8
Recess	88	3 15/16	116	4 9/16	N/A	N/A	N/A	N/A
Projection	0.8	1/32	11	7/16	N/A	N/A	N/A	N/A
Typical Mounting Height	864	34	864	34	864	34	864	34



CLASSIC SERIES

B-3644 RECESSED WASTE RECEPTACLE

Satin-finish stainless steel. Seamless beveled flange. Removable, 45.4L (12 gal) receptacle locks into cabinet. Hooks hold optional vinyl liner.

B-3644	Unit		Wall Opening	
	mm	Inches	mm	Inches
Width	435	17 3/16	405	16
Height	780	30 5/8	745	29 1/4
Recess	102	4	102	4
Projection	105	4 1/8	N/A	
Typical Mounting Height	1090–1195	43–47	1065–1170	42–46



CLASSIC SERIES

B-279 SURFACE MOUNTED WASTE RECEPTACLE

Satin-finish stainless steel. Bottom edges hemmed for maximum safety. Hooks hold furnished reusable vinyl liner; removable for servicing. 24.2L (6.4 gal).

B-279	Unit	
	mm	Inches
Width	355	14
Height	455	18
Depth	150	6
Typical Mounting Height	760	30

WASTE RECEPTACLES



CLASSIC SERIES

B-261 SURFACE MOUNTED FACIAL TISSUE WASTE RECEPTACLE

Satin-finish stainless steel. Bottom edges hemmed for maximum safety. Capacity: 5.7L (1.5 gal).

B-261	Unit	
	mm	Inches
Width, Top	265	10 ½
Width, Bottom	220	8 ⅝
Height	230	9
Depth	110	4 ¾
Typical Mounting Height	1065	42



CLASSIC SERIES

B-275 SURFACE MOUNTED WASTE RECEPTACLE

Satin-finish stainless steel. Bottom edges hemmed for maximum safety. Hooks hold furnished reusable vinyl liner; removable for servicing. Capacity: 75.7L (20 gal).

B-275	Unit	
	mm	Inches
Width	420	16 ½
Height	585	23
Depth	320	12 ½
Typical Mounting Height	890-990	35-39



CLASSIC SERIES

B-2250 FLOOR-STANDING WASTE RECEPTACLE WITH TOP

Satin-finish stainless steel. Top with self-closing doors. Vinyl wall bumper, rubber feet. Hooks for liners. Capacity: 49.2L (13 gal).

B-2250	Unit	
	mm	Inches
Width	320	12 ½
Height	750	29 ½
Depth	320	12 ½



CLASSIC SERIES

B-2280 FLOOR-STANDING OPEN-TOP WASTE RECEPTACLE

Satin-finish stainless steel. Open top. Vinyl wall bumper, rubber feet. Hooks for liners. Capacity: 79.5L (21 gal).

B-2260 Similar to B-2280, but with 49.2L (13 gal) capacity.

Model No.	Unit			
	B-2280		B-2260	
	mm	Inches	mm	Inches
Width	356	14	318	12 ½
Height	356	14	318	12 ½
Depth	762	30	559	22



NEW

B-2300 FLOOR-STANDING DOME-TOP WASTE RECEPTACLE

Satin-finish stainless steel body with black steel-domed top. Removable top with fingerprint-resistant textured powder coated finish has 150mm (6 in) diameter opening for hygienic, no-touch disposal of waste. Galvanized steel liner has grommeted lift holes. Capacity: 68.1L (18 gal).

B-2300	Unit	
	mm	Inches
Diameter	380	15
Height	785	31



NEW

B-2400 FLOOR-STANDING LARGE-CAPACITY WASTE RECEPTACLE

Satin-finish stainless steel. Removable funnel top with 210mm (8 ¼ in) diameter opening for hygienic, no-touch disposal of waste. Four heavy-duty rubber feet. Galvanized-steel waste container has handle for easy removal. Capacity: 125L (33 gal).

B-2400	Unit	
	mm	Inches
Diameter	465	18 ¼
Height	815	32



SANITARY NAPKIN DISPOSALS



CONTURA SERIES

B-270 SURFACE MOUNTED SANITARY NAPKIN DISPOSAL

Satin-finish stainless steel. Cover is drawn, one-piece construction; secured to cabinet with full length stainless steel piano-hinge. 3.8L (1.0 gal).

	Unit	
	mm	Inches
Width	190	7½
Height	255	10
Depth	95	3 ¹³ / ₁₆
Typical Mounting Height	635–760	25–30



CONTURA SERIES

B-4354 PARTITION MOUNTED SANITARY NAPKIN DISPOSAL

Satin-finish stainless steel. Mounts in toilet partition 13 to 32mm (½–1¼ in) thick. Self-closing doors pull down on both sides with less than 22.2N (5 lbs of force) for access to disposal. Removable, leak-proof, 2.7L (0.7 gal) plastic receptacle.

B-4354	Unit		Partition Opening	
	mm	Inches	mm	Inches
Width	325	12¾	280	11
Height	280	11	240	9¾
Partition Thickness	13–32	½–1¼	N/A	
Projection	38	1½	N/A	
Typical Mounting Height	785	31	760	30



TRIMLINE SERIES

B-35303 RECESSED SANITARY NAPKIN DISPOSAL

Satin-finish stainless steel. Door has 90° return, conceals flange. Self closing panel covers disposal opening. Removable, leak-proof, 4.6L (1.2 gal) plastic receptacle.

B-35303	Unit		Wall Opening	
	mm	Inches	mm	Inches
Width	330	13	290	11½
Height	480	18 ¹⁵ / ₁₆	440	17¼
Recess	90	3 ⁵ / ₈	95	3¾
Projection	14	9 ¹ / ₁₆	N/A	
Typical Mounting Height	785	31	760	30



CLASSIC SERIES

B-254 SURFACE MOUNTED SANITARY NAPKIN DISPOSAL

Satin-finish stainless steel. Door has tumbler lock. Self closing panel covers disposal opening. Removable, leak-proof, 4.6L (1.2 gal) plastic receptacle.

B-254	Unit	
	mm	Inches
Width	270	10 ¹¹ / ₁₆
Height	385	15 ¹ / ₈
Depth	105	4 ¹ / ₁₆
Typical Mounting Height	760	30



CLASSIC SERIES

B-353 RECESSED SANITARY NAPKIN DISPOSAL

Satin-finish stainless steel. Seamless beveled flange. Door has tumbler lock. Self-closing panel covers disposal opening. Removable, leak-proof, 4.6L (1.2 gal) plastic receptacle.

B-353	Unit		Wall Opening	
	mm	Inches	mm	Inches
Width	325	12¾	285	11¼
Height	435	17 ³ / ₁₆	395	15 ⁵ / ₈
Recess	100	3 ¹⁵ / ₁₆	102	4
Projection	3	1 ¹ / ₈	N/A	
Typical Mounting Height	785	31	760	30



CLASSIC SERIES

B-354 PARTITION MOUNTED SANITARY NAPKIN DISPOSAL

Satin-finish stainless steel. Mounts in partitions 13 to 32mm (½–1¼ in) thick. Self-closing panels cover openings on both sides. Removable, leak proof, 4.6L (1.2 gal) plastic receptacle.

B-354	Unit		Partition Opening	
	mm	Inches	mm	Inches
Width	325	12¾	280	11
Height	435	17 ³ / ₁₆	395	15½
Partition Thickness	13–32	½–1¼	N/A	
Projection	71–90	2 ¹³ / ₁₆ –3 ⁹ / ₁₆	N/A	
Typical Mtg. Ht.	785	31	760	30

CUBICLE COLLECTION



Please see page 15 for Toilet Tissue Dispenser and Spare Roll Holder information.



NEW

B-542 COAT HOOK

Satin-finish stainless steel. Threaded flange conceals mounting plate, provides snug fit to the wall. Flange has 49mm (1¹⁵/₁₆ in) diameter. Projects 33mm (1⁵/₁₆ in).

B-542	Unit	
	mm	Inches
Flange Width	49	1 ¹⁵ / ₁₆
Depth	33	1 ⁵ / ₁₆
Typical Mounting Height	965–1220	38–40



NEW

B-544 TOILET BRUSH HOLDER

Heavy-duty type 304 stainless steel, satin finish. Vandal-resistant wall mounting bracket. Stainless steel handle with replaceable nylon brush head. Water reservoir included.

B-544	Unit	
	mm	Inches
Overall Height	403	15 ⁷ / ₈
Depth	103	4 ¹ / ₁₆
Typical Mounting Height	152	6

BATHROOM ACCESSORIES



B-672 SURFACE MOUNTED DOUBLE ROBE HOOK

Contoured 102mm (4 in) wide bar forms hook at each end. Flange is 50 x 50mm (2 x 2 in). Bright-polished stainless steel. Projects 60mm (2 3/16 in) from wall.

B-6727 Similar to B-672, but with satin finish.

B-7672 Similar to B-672. Projects 50mm (1 7/8 in) from wall.

B-76727 Similar to B-7672, but with satin finish.



B-682

B-7682

B-682 SURFACE MOUNTED HAT AND COAT HOOK

Flange is 50 x 50mm (2 x 2 in). Bright-polished stainless steel. Hook 25mm wide, 165mm high (1 x 6 1/2 in); projects 80mm (3 1/16 in) from wall.

B-6827 Similar to B-682, but with satin finish.

B-7682 Similar to B-682. Hook 185mm (7 1/4 in) high; projects 70mm (2 3/4 in) from wall.

B-76827 Similar to B-7682, but with satin finish.



B-677 SURFACE MOUNTED TOWEL PIN

Flange is 50 x 50mm (2 x 2 in). Bright-polished stainless steel. Projects 85mm (3 3/8 in) from wall.

B-6777 Similar to B-677, but with satin finish.



B-211 SURFACE MOUNTED HEAVY-DUTY CLOTHES HOOK WITH EXPOSED MOUNTING

Hook and flange are one-piece brass casting with satin nickel-plated finish to match stainless steel. With three exposed countersunk mounting screw holes. Withstands 136kg (300 lbs) downward pull.

B-2116 Similar to B-211, but with three concealed mounting screw holes. Locks to wall plate with three stainless steel setscrews for theft-resistant mounting.

	Unit	
	mm	Inches
B-211		
Diameter	70	2 3/4
Depth	85	3 7/16
Typical Mounting Height	965–1220	38–40



B-212 SURFACE MOUNTED CLOTHES HOOK AND BUMPER

Solid aluminum casting, matte finish. Rubber bumper protects wall or partition surfaces.

	Unit	
	mm	Inches
B-212		
Width	40	1 1/2
Height	50	2
Depth	95	3 3/4
Typical Mounting Height	965–1220	38–40



B-233 SURFACE MOUNTED CLOTHES HOOK

3.2mm (11 gauge), type 304 stainless steel, satin finish.

	Unit	
	mm	Inches
B-233		
Width	30	1 1/4
Height	55	2 1/4
Depth	30	1 1/8
Typical Mounting Height	965–1220	38–40

BATHROOM ACCESSORIES



B-670 SURFACE MOUNTED UTILITY HOOK

For robes, shoe-shine cloth, and sanitary napkin disposal bag. Flange is 50 x 50mm (2 x 2 in). Bright-polished stainless steel. Hook 13mm ($\frac{1}{2}$ in) wide, projects 50mm (2 in) from wall.

B-6707 Similar to B-670, but with satin finish.



B-671 SURFACE MOUNTED SINGLE ROBE HOOK

Flange is 50 x 50mm (2 x 2 in). Bright-polished stainless steel. Projects 50mm (2 in) from wall.

B-6717 Similar to B-671, but with satin finish.

B-7671 Similar to B-671. Projects 40mm ($1\frac{5}{8}$ in) from wall.

B-76717 Similar to B-7671, but with satin finish.



B-674 SURFACE MOUNTED TOWEL BAR

Round 19mm ($\frac{3}{4}$ in) diameter towel bar. Bright-polished stainless steel. Available in 455mm and 610mm lengths, (18, 24 in). Projects 85mm ($3\frac{3}{4}$ in) from wall.

B-6747 Similar to B-674, but with satin finish. 610mm length (24 in).

B-7674 Similar to B-674. Available in 455mm and 610mm lengths, (18, 24 in).

B-76747 Similar to B-7674, but with satin finish.



B-676 SURFACE MOUNTED TOWEL SHELF WITH TOWEL BAR

Shelf 160mm ($6\frac{1}{4}$ in) wide, consists of four 8mm ($\frac{5}{16}$ in) square tubes firmly mounted in support arms. 8mm ($\frac{5}{16}$ in) square towel bar below shelf. 610mm length (24 in). Projects 215mm ($8\frac{1}{2}$ in) from wall.

B-7676 Similar to B-676, but consists of four 10mm ($\frac{3}{8}$ in) round tubes mounted in support arms. 6mm ($\frac{1}{4}$ in) round towel bar below shelf. Bright-polished stainless steel. 610mm length (24 in). Projects 210mm ($8\frac{3}{4}$ in) from wall.

B-76767 Similar to B-7676, but with satin finish.



B-683 SURFACE MOUNTED TOILETRY SHELF

Bright-polished stainless steel. 610mm length (24 in). Shelf 120mm ($4\frac{3}{4}$ in) wide, projects 145mm ($5\frac{3}{4}$ in) from wall. Edges are roll-formed for safety.



B-673 SURFACE MOUNTED TOWEL BAR

19mm ($\frac{3}{4}$ in) square towel bar. Bright-polished stainless steel. Available in 455mm and 610mm lengths, (18, 24 in). Projects 85mm ($3\frac{3}{4}$ in) from wall.

B-6737 Similar to B-673, but with satin finish. 610mm length (24 in).

B-7673 Similar to B-673. Available in 455mm and 610mm lengths, (18, 24 in).

B-76737 Similar to B-7673, but with satin finish.

BATHROOM ACCESSORIES



B-3541 SURFACE MOUNTED SANITARY DISPOSAL BAG DISPENSER

Satin-finish stainless steel. Equipped with concealed locking device. Concealed wall plate 0.8mm (22 gauge) type 304 stainless steel. Holds one pack of 25 two-ply plastic bags. Bags not supplied.

B-3541	Unit	
	mm	Inches
Width	95	3 ¾
Height	105	4 ¼
Depth	25	1



B-8397 SURFACE MOUNTED FACIAL TISSUE DISPENSER

Cabinet type 304 stainless steel, satin finish. Equipped with concealed locking device; opens with key provided. Concealed wall plate is 0.8mm (22 gauge), type 304 stainless steel. Dispenses one pack of 100 two-ply facial tissues. Tissues not supplied.

B-8397	Unit	
	mm	Inches
Width	260	10 ¼
Height	130	5 ¾
Depth	55	2 ¼



B-355 RECESSED FACIAL TISSUE DISPENSER

Faceplate type 304 stainless steel, satin finish. Galvanized-steel mounting cabinet. Dispenses 300 two-ply facial tissues. Tissues not supplied.

B-355	Unit		Wall Opening	
	mm	Inches	mm	Inches
Width	300	11 7/8	275	10 ¾
Height	155	6 1/8	135	5 ¼
Recess	100	3 15/16	102	4
Projection	5	3/16	N/A	



B-297 SURFACE MOUNTED MEDICINE CABINET

All-steel cabinet and two fixed shelves with baked white enamel finish. Mirror: No. 1 quality, 3mm (1/8 in) glass electrolytically copper-plated. Door has enameled steel piano-hinge and magnetic catch.

B-397 RECESSED MEDICINE CABINET All-steel cabinet with baked white enamel finish. Three adjustable plastic shelves. Mirror: No. 1 quality, 6mm (1/4 in) glass electrolytically copper-plated. Door has enameled steel piano-hinge and magnetic catch.



B-299 SURFACE MOUNTED MEDICINE CABINET

Type 304 stainless steel, satin finish. Mirror: No. 1 Quality, 6mm (1/4 in) glass electrolytically copper-plated. 15-year guarantee against silver spoilage. Door has full-length stainless steel piano-hinge, magnetic catch and cable doorstop. Four adjustable stainless steel shelves. Cabinet may be inverted for right- or left-hand door swing.

B-398 RECESSED MEDICINE CABINET Similar to B-299 for recessed installation.

Model No.	Unit				Wall Opening	
	B-297		B-397		B-397	
	mm	Inches	mm	Inches	mm	Inches
Width	360	14 1/8	405	15 7/8	355	14
Height	515	20 1/4	655	25 7/8	600	23 5/8
Depth	95	3 3/4	85	3 1/4	90	3 1/2
Projection	N/A		25	1	N/A	
Typical Mounting Height	1755	69	1855	73	1630	72
Barrier-Free Mounting Height	1625	60	1665	65 1/2	1640	64 1/2

Model No.	Unit				Wall Opening	
	B-299		B-398		B-398	
	mm	Inches	mm	Inches	mm	Inches
Width	430	17	430	17	305	15 1/2
Height	685	26 7/8	685	26 7/8	650	25 1/2
Depth	130	5	90	3 1/2	95	3 5/8
Projection	N/A		45	1 11/16	N/A	
Typical Mounting Height	1880	74	1880	74	1865	73 1/2
Barrier-Free Mounting Height	1690	66 1/2	1690	66 1/2	1675	66

BATHROOM ACCESSORIES

CLASSIC SERIES



B-6047 SURFACE MOUNTED EXTRA-HEAVY-DUTY SHOWER CURTAIN ROD

Type 304 stainless steel, satin-finish rod and flanges. 1.2mm (18 gauge), 32mm (1¼ in) diameter rod. Flanges are 65mm (2½ in) square. Available in 915mm (36 in), 1220mm (48 in), 1525mm (60 in), 1830mm (72 in) lengths.

CLASSIC SERIES



B-6107 SURFACE MOUNTED HEAVY-DUTY SHOWER CURTAIN ROD

Type 304 stainless steel, satin-finish rod and flanges. 1.0mm (20 gauge), 25mm (1 in) diameter rod. Flanges are 65mm (2½ in) square. Available in 915mm (36 in), 1220mm (48 in), 1525mm (60 in), 1830mm (72 in) lengths.

CLASSIC SERIES



B-207 SURFACE MOUNTED SHOWER CURTAIN ROD WITH CONCEALED MOUNTING

Type 304 stainless steel, satin finish 1.0mm (20 gauge), 25mm (1 in) diameter rod. Flanges are 35mm (1⅜ in) diameter, chrome-plated plastic, bright-polished finish; mount on concealed wall brackets. Available in 915mm (36 in), 1220mm (48 in), 1525mm (60 in), 1830mm (72 in) lengths.

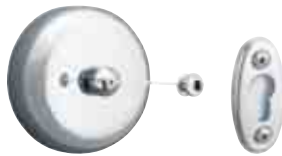


204-2 VINYL SHOWER CURTAIN

Opaque, matte white vinyl, 0.2mm (0.008 in) thick, contains antibacterial and flame-retardant agents. Nickel-plated brass grommets along top, one every 150mm (6 in). Bottom and sides are hemmed. Hooks are not included. Curtain 1065mm wide, 1830mm high (42 x 72 in). Requires 7 hooks.

204-3 Similar to 204-2, but curtain is 1780mm wide, 1830mm high (70 x 72 in). Requires 12 hooks.

204-1 SHOWER CURTAIN HOOK Type 304 stainless steel for use on 25mm and 32mm (1 in and 1¼ in) diameter shower curtain rods.



B-7636 SURFACE MOUNTED RETRACTABLE CLOTHESLINE

Budget-priced model installs over bathtub or in shower. 3m (10 ft) clothesline pulls out for convenient use; retracts neatly out of way. Locking knob on cover secures line. Retainer bracket mounts on opposite wall to secure clothesline. Cover and retainer bracket are bright-polished stainless steel. Unit 90mm (3⅝ in) diameter; projects 30mm (1⅞ in) from wall. Typical Mounting Height: 1780mm (70 in) to top of unit; Barrier-Free Mounting Height: 965mm to 1220mm (38–48 in).



B-240 WALL-MOUNTED STAINLESS STEEL ASHTRAY

Satin-finish stainless steel. For installation in washrooms above countertops, in toilet compartments, and alongside urinals. Can also be mounted in hallway and lobby areas where space is limited. Ashtray flips over for emptying without removal from frame. Unit 125mm W, 40mm H, 100mm D (5 x 1½ x 3⅞ in). Universal/Barrier-Free Mounting Height: 965mm to 1220mm (38–48 in) to top of unit.

BATHROOM ACCESSORIES



B-5181 SURFACE MOUNTED REVERSIBLE FOLDING SHOWER SEAT

Meets the needs of the physically disabled and elderly. Seat is constructed of durable, water-resistant, ivory-colored, 13mm (½ in) thick solid phenolic. Reversible for left- or right-hand field installation. Frame and mounting brackets are type 304 stainless steel with self-locking mechanism. Supports up to 163kg (360 lbs) when properly installed. Left-handed seat shown.

B-5181	Unit	
	mm	Inches
Width	840	33
Depth	565	22 5/16
Typical Mounting Height	430–485	17–19



B-5191 SURFACE MOUNTED FOLDING SHOWER SEAT

Compact design. Seat is constructed of durable, water-resistant, ivory-colored, 8mm (5/16 in) thick solid phenolic. Frame and mounting bracket are type 304 stainless steel and feature self-locking mechanism. Supports up to 204kg (450 lbs) when properly installed.

B-5191	Unit	
	mm	Inches
Width	455	18
Depth	400	15 13/16
Typical Mounting Height	430–485	17–19



B-5891 SURFACE MOUNTED BAR WITH BACK REST

Satin-finish stainless steel bar with back rest. Snap flange. Back rest is 13mm (½ in) thick solid phenolic with matte-finish melamine surfaces, white colored face sheets, and black core; polished black edges.

B-5891	Unit	
	mm	Inches
Diameter, Bar	32	1 ¼
Length, Bar	405	16
Height, Flange	85	3 ¼
Width, Back rest	255	10
Height, Back Rest	102	4
Projection	255	10



B-287 SURFACE MOUNTED FOLDING UTILITY SHELF

Easily installed on toilet partition or wall. Type 304 stainless steel, satin finish. Pull-down shelf returns to upright position when not in use. Supports 45.35kg (100 lbs) when properly installed.

B-287	Unit	
	mm	Inches
Length, Shelf	370	14 ½
Width, Shelf	145	5 ¾



B-687 SURFACE MOUNTED DOOR BUMPER

Flange is 50 x 50mm (2 x 2 in). Bright-polished stainless steel. Black nylon post with black neoprene bumper. Projects 55mm (2 ¼ in) from wall.



B-680 SURFACE MOUNTED SOAP DISH

Drawn, one-piece soap dish welded to support arm and flange. Two ridges to support bar of soap and two drain holes. Bright-polished stainless steel. Unit 115mm wide, 50mm high (4 ½ x 2 in); projects 85mm (3 ¾ in) from wall.

B-6807 Similar to B-7680, but with satin finish.

B-7680 Similar to B-680, but unit 110mm wide, 50mm high (4 ¼ x 2 in); projects 105mm (4 ¼ in) from wall.

B-76807 Similar to B-7680, but with satin finish.

BATHROOM ACCESSORIES



B-681 SURFACE MOUNTED SOAP DISH AND BAR

Drawn, one-piece soap dish welded to support arm and flange. Two ridges to support bar of soap and two drain holes. 19mm ($\frac{3}{4}$ in) square bar 215mm (8 $\frac{1}{2}$ in) long. Bright-polished stainless steel. Unit 305mm wide, 50mm high (12 x 2 in); projects 85mm (3 $\frac{3}{8}$ in) from wall.

B-7681 Similar to B-681. Bar 290mm (11 $\frac{1}{2}$ in) long. Unit 370mm (14 $\frac{1}{2}$ in) wide; projects 105mm (4 $\frac{1}{8}$ in) from wall.



B-4390 RECESSED HEAVY-DUTY SOAP DISH AND BAR

Type 304 stainless steel, matte polished finish. Mounting clamp for stud walls.

B-4380 Similar to B-4390, but without bar.

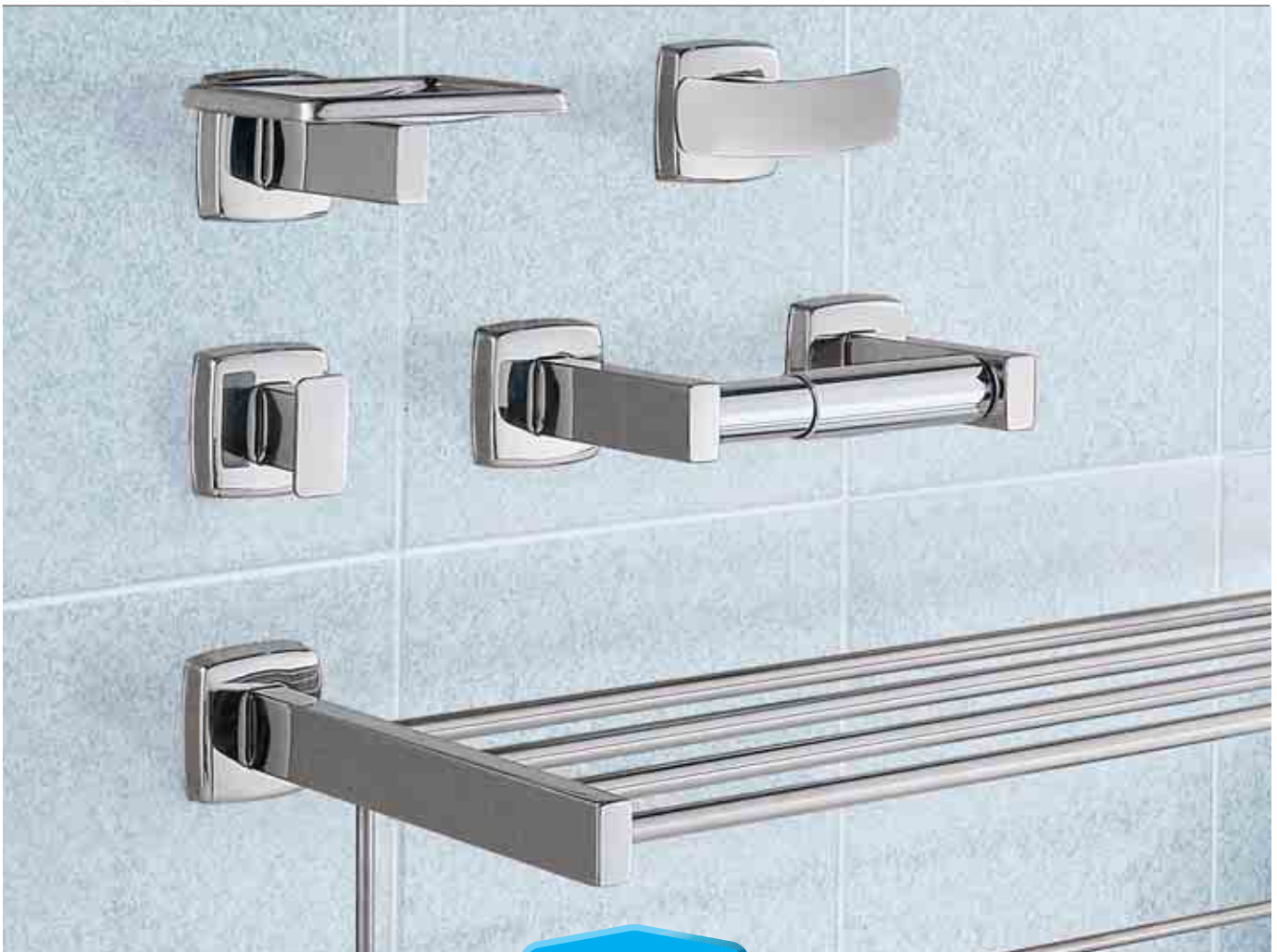
B-4390	Unit		Wall Opening	
	mm	Inches	mm	Inches
Width	185	7 $\frac{3}{16}$	150	6
Height	125	5	102	4
Recess	65	2 $\frac{5}{8}$	102	4
Projection	35	1 $\frac{7}{16}$	N/A	
Typical Mounting Height	965–1220	38–48	950–1205	37 $\frac{3}{8}$ –47 $\frac{3}{8}$



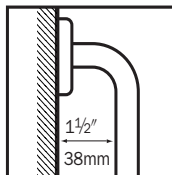
805355 TOILET BRUSH HOLDER

Heavy-duty type 304 stainless steel, satin finish. Can be wall-mounted or floor standing. Durable nylon brush included.

805355	Unit	
	mm	Inches
Width	135	5 $\frac{1}{4}$
Height	260	10 $\frac{1}{4}$
Depth	140	5 $\frac{1}{2}$



GRAB BARS



Clearance between wall and grab bar.

- Constructed of satin-finish stainless steel tubing in 32mm and 38mm (1¼ and 1½ in) diameters; concealed or exposed mounting.
- Peened nonslip gripping surface available on all Series. Add suffix .99 to model number.
- Bar 1.2mm (18 gauge), type 304 stainless steel.
- Bar passes through flange and is heliarc welded to form single structural unit.
- Comply with structural strength requirements: grab bars that provide 38mm (1½ in) clearance from the wall can support loads in excess of 408kg (900 lbs) when properly installed.
- Mandrel bending process ensures uniform bar diameter around curves.
- All joints and supports are contour cut and welded.
- Concealed anchors and fasteners available as an optional accessory.

Series	Diameter	*Finish
*B-6806	38mm (1½ in)	Satin Finish
*B-5806	32mm (1¼ in)	Satin Finish

*Peened nonslip gripping surface available. Add suffix .99 to model number.



CONCEALED MOUNTING

- Cover snaps over mounting flange to conceal screws.
- Concealed mounting flange 3mm (¼ in) thick, type 304 stainless steel plate, 50mm wide x 80mm high (2 x 3¼ in), with screw holes for concealed anchors.
- Cover is 0.8mm (22 gauge), type 304 stainless steel with satin finish, 85mm (3¼ in) diameter.

B-6806 STRAIGHT GRAB BAR

Satin-finish stainless steel grab bar for tub/shower/toilet compartment. Snap flange.

B-6806.99 Similar to B-6806, but with peened nonslip grip.

Model No.	B-6806		B-6806.99	
	mm	Inches	mm	Inches
Diameter, Bar	38	1½	38	1½
Length	305	12	N/A	
	455	18	455	18
	610	24	610	24
	760	30	760	30
	915	36	915	36
	1065	42	1065	42
1220	48	1220	48	

B-6861 TWO-WALL HORIZONTAL GRAB BAR

Satin-finish stainless steel grab bar for 915 x 915mm (36 x 36 in) shower compartments. Snap flange.

B-6861.99 Similar to B-6861, but with peened nonslip grip.

B-6861 B-6861.99	Unit	
	mm	Inches
Diameter, Bar	38	1½
Width	403	15 7/8
Length	784	30 7/8

B-68616 TWO-WALL HORIZONTAL GRAB BAR

Satin-finish stainless steel grab bar for tub/shower/toilet compartment. Snap flange.

B-68616.99 Similar to B-68616, but with peened nonslip grip.

B-68616 B-68616.99	Unit	
	mm	Inches
Diameter, Bar	38	1½
Width	610	24
Length	915	36

B-68137 TWO-WALL HORIZONTAL GRAB BAR

Satin-finish stainless steel grab bar for tub/shower/toilet compartment. Snap flange.

B-68137.99 Similar to B-68137, but with peened nonslip grip.

B-68137 B-68137.99	Unit	
	mm	Inches
Diameter, Bar	38	1½
Width	915	36
Length	1370	54

GRAB BARS



B-5806 STRAIGHT GRAB BAR

Satin-finish stainless steel grab bar for tub/shower/toilet compartment. Snap flange.

B-5806.99 Similar to B-5806, but with peened nonslip grip.

B-5806 B-5806.99	Unit	
	mm	Inches
Diameter, Bar	32	1 ¼
Length	305	12
	455	18
	610	24
	760	30
	915	36
	1065	42
	1220	48



B-5845 RIGHT-HANDED 40-DEGREE GRAB BAR

Satin-finish stainless steel grab bar for tub/shower/toilet compartment. 40° angle. Snap flange.

B-5845	Unit	
	mm	Inches
Diameter, Bar	32	1 ¼
Horizontal, Length	850	33 ½
40° Angle, Length	700	27 9/16



B-5855 LEFT-HANDED 40-DEGREE GRAB BAR

Satin-finish stainless steel grab bar for tub/shower/toilet compartment. 40° angle. Snap flange.

B-5855	Unit	
	mm	Inches
Diameter, Bar	32	1 ¼
Horizontal, Length	850	33 ½
40° Angle, Length	700	27 9/16



B-58616 TWO-WALL HORIZONTAL GRAB BAR

Satin-finish stainless steel grab bar for tub/shower/toilet compartment. Snap flange.

B-58616.99 Similar to B-58616 but with peened nonslip grip.

B-58616 B-58616.99	Unit	
	mm	Inches
Diameter, Bar	32	1 ¼
Width	610	24
Length	915	36



B-4998 WALL MOUNTED SWING UP GRAB BAR

Satin-finish stainless steel grab bar for tub/shower/toilet compartment. Exposed mounting.

B-4998.99 Similar to B-4998, but with peened nonslip grip.

B-4998 B-4998.99	Unit	
	mm	Inches
Diameter, Bar	32	1 ¼
Length	735	29

MIRRORS



B-290 SERIES

B-290 SERIES WELDED-FRAME MIRRORS

• One-piece, roll-formed 19 x 19mm ($\frac{3}{4}$ x $\frac{3}{4}$ in) angle-frame • Type 304 stainless steel angle with satin finish • Corners heliarc welded, ground and polished smooth • Beveled frame edge at mirror for improved appearance • No. 1 quality, 6mm ($\frac{1}{4}$ in) glass mirror; warranted against silver spoilage for 15 years • Galvanized steel back • Secured to concealed wall hanger with theft-resistant mounting

MODEL NO.	W	H	MODEL NO.	W	H
B-290 1824	46cm	61cm	(18x24 in)	B-290 2448	61cm 122cm (24x48 in)
B-290 1830	46cm	76cm	(18x30 in)	B-290 2460	61cm 152cm (24x60 in)
B-290 1836	46cm	91cm	(18x36 in)	B-290 2472	61cm 183cm (24x72 in)
B-290 2430	61cm	76cm	(24x30 in)	B-290 7236	183cm 91cm (72x36 in)
B-290 2436	61cm	91cm	(24x36 in)		

B-292 SERIES WELDED-FRAME MIRROR/SHELF COMBINATION

• Same mirror as B-290 Series • Type 304 satin-finish stainless steel shelf • Shelf projects 127mm (5 in), with 19mm ($\frac{3}{4}$ in) return on front and sides; front return edge hemmed for rigidity and safety • Shelf corners heliarc welded, ground and polished smooth

MODEL NO.	W	H	MODEL NO.	W	H
B-292 1824	46cm	61cm	(18x24 in)	B-292 1836	46cm 91cm (18x36 in)
B-292 1830	46cm	76cm	(18x30 in)	B-292 2436	61cm 91cm (24x36 in)

SPECIAL-ORDER CUSTOM SIZE B-290 AND B-292 SERIES MIRRORS

B-290 Maximum size of one piece of mirror: 366 x 183cm (144 x 72 in). Maximum frame size available: 457 x 183cm (180 x 72 in) with two pieces of glass.

B-292 Maximum frame size available: 244 x 183cm (96 x 72 in) with one piece of glass. Maximum size of shelf: 244cm (96 in) furnished as one piece.

To specify special sizes, use Series No. followed by width and height in inches.



B-165 SERIES

B-165 SERIES CHANNEL-FRAME MIRRORS

• One-piece, 13 x 13 x 13mm ($\frac{1}{2}$ x $\frac{1}{2}$ x $\frac{1}{2}$ in) channel-frame • Type 430 stainless steel with bright polished finish • Mitered corners • Frame screw permits easy replacement of glass • No. 1 quality, 6mm ($\frac{1}{4}$ in) glass mirror warranted against silver spoilage for 10 years • Galvanized steel back • Secured to concealed wall hanger with theft-resistant mounting

MODEL NO.	W	H	MODEL NO.	W	H
B-165 1624	41cm	61cm	(16x24 in)	B-165 2448	61cm 122cm (24x48 in)
B-165 1824	46cm	61cm	(18x24 in)	B-165 2460	61cm 152cm (24x60 in)
B-165 1830	46cm	76cm	(18x30 in)	B-165 3636	91cm 91cm (36x36 in)
B-165 1836	46cm	91cm	(18x36 in)	B-165 4836	122cm 91cm (48x36 in)
B-165 2430	61cm	76cm	(24x30 in)	B-165 6036	152cm 91cm (60x36 in)
B-165 2436	61cm	91cm	(24x36 in)		

SPECIAL-ORDER CUSTOM SIZE B-165 SERIES MIRRORS

Maximum size mirror: 183 x 152cm (72 x 60 in). To specify special sizes, use Series Number followed by width and height.

B-166 SERIES CHANNEL-FRAME MIRROR/SHELF COMBINATION

• Same mirror as B-165 Series • Type 304 satin-finish stainless steel shelf • Shelf projects 127mm (5 in) with 10mm ($\frac{3}{8}$ in) return on front and sides; front return edge hemmed for rigidity and safety

MODEL NO.	W	H	MODEL NO.	W	H
B-166 1824	46cm	61cm	(18x24 in)	B-166 1836	46cm 91cm (18x36 in)
B-166 1830	46cm	76cm	(18x30 in)	B-166 2436	61cm 91cm (24x36 in)

SPECIAL-ORDER CUSTOM SIZE B-166 SERIES MIRRORS

Maximum size mirror: 61 x 152cm (24 x 60 in). Maximum shelf length: 61cm (24 in). To specify special sizes, use Series Number followed by width and height in inches.



MIRRORS

STANDARD SIZE TEMPERED GLASS MIRRORS



B-2908 SERIES



B-1658 SERIES

Tempered glass mirrors are engineered for heavy-traffic, vandal-prone restrooms in stadiums, outdoor recreation centers and low-supervision facilities such as parks and highway rest stops.

Tempered glass mirrors resist breakage and provide a measure of safety from broken glass, but differ in color and reflective quality from standard glass mirrors. Bobrick uses the highest quality tempered glass mirrors. Modest distortion or heat-generated markings are normal in the tempered glass mirror manufacturing process. Therefore, Bobrick will not accept returns of tempered glass mirrors with random distortion or markings.

B-2908 SERIES STANDARD SIZE TEMPERED GLASS WELDED-FRAME MIRRORS

- Same frame as B-290 Series • 6mm (1/4 in) tempered glass mirror

MODEL NO.	W	H
B-2908 1830	46cm	76cm (18x30 in)
B-2908 1836	46cm	91cm (18x36 in)
B-2908 2436	61cm	91cm (24x36 in)

B-1658 SERIES STANDARD SIZE TEMPERED GLASS CHANNEL-FRAME MIRRORS

- Same frame as B-165 Series • 6mm (1/4 in) tempered glass mirror

MODEL NO.	W	H
B-1658 1830	46cm	76cm (18x30 in)
B-1658 1836	46cm	91cm (18x36 in)
B-1658 2436	61cm	91cm (24x36 in)

SPECIAL-ORDER REFLECTIVE SURFACES

Polished Stainless Steel, Tempered and Laminated Glass Mirrors resist breakage and provide a measure of safety from broken glass, but differ in color and reflective quality from standard glass mirrors. Modest distortion is normal and not a returnable condition. Available on special order.

POLISHED STAINLESS STEEL

B-1656 Series Mirrors (up to 183 x 61cm; 72 x 24 in)

B-2906 Series Mirrors (up to 183 x 61cm; 72 x 24 in)

TEMPERED GLASS

B-1658 Series Mirrors (up to 183 x 122cm; 72 x 48 in)

B-2908 Series Mirrors (up to 305 x 122cm; 120 x 48 in)

LAMINATED GLASS

B-1659 Series Mirrors (up to 183 x 122cm; 72 x 48 in)

B-2909 Series Mirrors (up to 245 x 122cm; 96 x 48 in)



B-293



B-294

B-293 SERIES FIXED-POSITION TILT MIRRORS

Provide visibility for wheelchair patients. Frame is type 304 stainless steel, satin finish. Beveled edges of frame hug mirror; provides gapless fit for improved appearance, and safety when cleaning mirror. No. 1 quality, 6mm (1/4 in) glass mirror electrolytically copper plated. Mirror extends 102mm (4 in) from wall at top and tapers to 25mm (1 in) at bottom.

MODEL NO.	W	H	MODEL NO.	W	H
B-293 1630	41cm	76cm (16x30 in)	B-293 1836	46cm	91cm (18x36 in)
B-293 1830	46cm	76cm (18x30 in)	B-293 2436	61cm	91cm (24x36 in)

SPECIAL-ORDER CUSTOM SIZE B-293 SERIES MIRRORS

Maximum size mirror: 91 x 122cm (36 x 48 in).

B-294 SERIES ANGLE-FRAME TWO POSITION TILT MIRROR

Tilt forward to provide full visibility for wheelchair patients or return to upright position. Frame is 19 x 19mm (3/4 x 3/4 in), type 304 stainless steel angle, satin finish. Beveled edges of frame hug mirror; provides gapless fit for improved appearance, and safety when cleaning mirror. No. 1 quality, 6mm (1/4 in) glass mirror electrolytically copper-plated. Top of mirror tilts 180mm (7 in) from wall with self-locking mechanisms; bottom of mirror mounts to wall with full-length stainless steel hinge.

MODEL NO.	W	H	MODEL NO.	W	H
B-294 1624	41cm	61cm (16x24 in)	B-294 1630	41cm	76cm (16x30 in)

SPECIAL-ORDER CUSTOM SIZE B-294 SERIES MIRRORS

Maximum size mirror: 61 x 91cm (24 x 36 in).

NOTES

- To specify mirrors, use Series Number desired followed by width and height in inches.
- Width dimension must always be stated first following Series Number.
- Framed mirrors are manufactured to overall dimensions, as shown in all mirror tables on pages 30 and 31.
- Overall height of mirror/shelf models includes shelf.
- Framed mirrors must be installed with width and height dimensions as ordered.
- Mirror back and wall hanger cannot be installed side ways to reverse width and height dimensions.
- Provide minimum 19mm (3/4 in) clearance at top of mirror for mounting on wall hanger and 25mm (1 in) clearance on each side.

WARM-AIR HAND DRYERS



Choose from a comprehensive line of models designed and engineered for all building types and washroom environment needs, including vandal-resistant requirements.



B-740 ECLIPSE® SURFACE MOUNTED HAND DRYER

Contemporary styling; durable, drawn steel white vitreous enamel cover. Automatic hand sensor. 10-year limited warranty.

B-740	Unit	
	mm	Inches
Width	385	15 1/16
Height	225	8 7/8
Depth	190	7 9/16



B-748 ECLIPSE® SURFACE MOUNTED HAND DRYER

Contemporary styling, durable, drawn steel bright-polished chrome-plated cover. Automatic hand sensor. 10-year limited warranty.

B-748	Unit	
	mm	Inches
Width	385	15 1/16
Height	225	8 7/8
Depth	190	7 9/16



B-715/B-715E ELAN™ SURFACE MOUNTED HAND DRYER

Contemporary styling; satin-finish type 304 stainless steel cover. Automatic hand sensor. 5-year limited warranty.

B-715 B-715E	Unit	
	mm	Inches
Width	295	11 5/8
Height	280	11
Depth	140	5 9/16



B-700 AIRCRAFT® SURFACE MOUNTED HAND DRYER

Cast-iron with vitreous enamel finish cover. Automatic hand sensor. 10-year warranty.

B-700	Unit	
	mm	Inches
Width	350	13 3/4
Height	265	10 3/8
Depth	185	7 1/4

WARM-AIR HAND DRYERS



B-750 AIRCRAFT® RECESSED HAND DRYER

Cast-iron with white vitreous enamel finish cover. Automatic hand sensor. 10-year limited warranty.

B-750	Unit		Wall Opening	
	mm	Inches	mm	Inches
Width	385	15 1/4	350	13 3/4
Height	300	11 7/8	240	9 1/2
Recess	90	3 9/16	95	3 3/4
Projection	102	4	N/A	



B-709 AIRPRO™ SURFACE MOUNTED HAND DRYER

Durable cast aluminum white painted cover. Automatic hand sensor. 5-year limited warranty.

B-709	Unit	
	mm	Inches
Width	335	13 3/16
Height	260	10 5/16
Depth	190	7 1/2



B-705/B-705E CUB™ SURFACE MOUNTED HAND DRYER

One-piece white molded plastic cover. Automatic hand sensor. 1-year limited warranty.

B-705 B-705E	Unit	
	mm	Inches
Width	245	9 5/8
Height	285	11 1/8
Depth	140	5 7/16



B-710/B-710E COMPAC™ SURFACE MOUNTED HAND DRYER

Contemporary styling. Hand dryer with one-piece grey-molded plastic cover. Automatic hand sensor. 1-year limited warranty.

B-710 B-710E	Unit	
	mm	Inches
Width	275	10 13/16
Height	280	10 15/16
Depth	130	5 3/16

ELECTRICAL SPECIFICATIONS

B-700	115V AC , 20 Amp, 2400 Watts, 50/60 Hz. All models cULus Listed.
B-750	208-240V AC , 9-10 Amp, 1900-2400 Watts, 50/60 Hz. All models cULus Listed, VDE approved, CE marked and CCC approved.
B-709	
B-705	115V AC , 13 Amp, 1035 Watts, 60 Hz, cULus Listed.
B-705E	220-240V AC , 6 Amp, 1300-1500 Watts, 50/60 Hz. VDE approved, CE marked.

B-710	115V AC , 15 Amp, 1725 Watts, 60 Hz, cULus Listed.
B-715	
B-710E	220-240V AC , 7 Amp, 1500-1700 Watts, 50/60 Hz. VDE approved, CE marked.
B-715E	
B-740	115V AC , 20 Amp, 2300 Watts, 50/60 Hz. All models cULus Listed.
B-748	208-240V AC , 9-10 Amp, 1900-2400 Watts, 50/60 Hz. All models cULus Listed, VDE approved, CE marked and CCC approved.

HOW TO ORDER: Specify voltage by adding **115V** or **230V** following model number. Example **B-700 115V**.

Note: Models B-705 and B-710 are not designed for vandal-prone installations. For vandal-prone installations, use Bobrick B-700 or B-750 AirCRAFT dryers with cast-iron vitreous enamel finished cover, or B-740 Eclipse dryer with drawn steel, vitreous enamel finished cover.

INSTALLATION NOTE

Bobrick automatic hand dryers should be installed 380mm (15 in) above any projection or horizontal surface which may interfere with the operation of the automatic sensor.



CHILD CARE PRODUCTS



MICROBAN® ANTIMICROBIAL PRODUCT PROTECTION: A KOALA BABY CHANGING STATION EXCLUSIVE.

Microban technology is built into Koala Baby Changing Stations and becomes an intrinsic part of the Station. When microbes, such as bacteria, mold and mildew that can cause stains, odors and product deterioration come into contact with the station surface, Microban protection penetrates the cell wall of the microbe and disrupts key cell functions so that the microbe cannot function, grow or reproduce. Microban helps Koala Baby Changing Stations stay cleaner between cleanings. Please see Microban Technical Bulletin, TB-12.

Microban® is a registered trademark of Microban Products Company.

NOTES

1. Full-length steel-on-steel hinges with 3.2mm (11 gauge) steel mounting supports.
2. Complies with ANSI S117.1 Accessible and Usable Buildings and Facilities, ASTM F2285-04 (formerly ASTM PS125) Standard Consumer Safety Performance Specification for Diaper Changing Tables for Commercial Use, ANSI Z535.4 Product Safety Signs and Labels, German TUV Technical Inspection Association, ASTM G21 Antifungal and ASTM G22 Antibacterial Standards, ADA Accessibility Standards for height, reach, projection, operation, overlap wheelchair turning radius.
3. Changing surface is smooth and concave providing both comfort for the baby as well as maintenance cost containment with the absence of pinch points, crevices and other dust and dirt collection areas.
4. Constructed of high-density polyethylene with exclusive Microban® anti-microbial product protection.
5. Replaceable nylon safety straps, hooks for bags and purses.
6. All Baby Changing Station models equipped with built-in Sanitary Bed Liner Dispensers.



KOALA KARE PRODUCTS

KB110-SSRE-INB HORIZONTAL, RECESSED MOUNTED BABY CHANGING STATION

Satin stainless steel exterior finish with grey polyethylene interior. Smooth concave changing bed with safety straps, integral liner dispenser, diaper-bag hooks, and molded instructions.

Liners sold separately.

KB110-SSRE-INB	Unit		Wall Opening	
	mm	Inches	mm	Inches
Width	940	37	900	35 ½
Height	585	23	520	20 ½
Recess	102	4	102	4
Projection, Closed	20	¾	N/A	
Projection, Open	405	15 ¼	N/A	
Typical Mtg. Ht.	1245	49	1220	48



KOALA KARE PRODUCTS

KB110-SSWM-INB HORIZONTAL, WALL-MOUNTED BABY CHANGING STATION

Satin stainless steel exterior finish with grey polyethylene interior. Smooth concave changing bed with safety straps, integral liner dispenser, diaper-bag hooks, and molded instructions.

Liners sold separately.

KB110-SSWM-INB	Unit	
	mm	Inches
Width	895	35 ¼
Height	510	20
Projection, Closed	102	4
Projection, Open	489	19 ¼
Typical Mtg. Ht.	1220	48



KOALA KARE PRODUCTS

KB100-00-INB HORIZONTAL, WALL-MOUNTED BABY CHANGING STATION

Polyethylene, cream. Smooth concave changing bed with safety straps, integral liner dispenser, diaper-bag hooks, and molded instructions including Braille.

Liners sold separately.

KB100-00-INB	Unit	
	mm	Inches
Width	890	35
Height	510	20
Projection, Closed	102	4
Projection, Open	489	19 ¼
Typical Mtg. Ht.	1220	48



CHILD CARE PRODUCTS



KOALA KARE PRODUCTS

KB101-00-INB VERTICAL, WALL MOUNTED BABY CHANGING STATION

Polyethylene, cream. Smooth concave changing bed with safety straps, integral liner dispenser, diaper-bag hooks, and molded instructions including Braille.

Liners sold separately.

KB101-00-INB	Unit	
	mm	Inches
Width	560	20
Height	900	35½
Projection, Closed	135	5¼
Projection, Open	890	35
Typical Mtg. Ht.	1575	62



KOALA KARE PRODUCTS

KB102-00-INB WALL MOUNTED CHILD PROTECTION SEAT

Polyethylene, cream. Mounts on wall or partition of toilet compartment. Contoured seat with textured surface. Safety straps extend over child's shoulders and between legs for security.

KB102-00-INB	Unit	
	mm	Inches
Width	310	12¼
Height	475	18¾
Projection, Closed	145	5⅝
Projection, Open	315	12½
Typical Mounting Height	Bottom of unit 50mm (2 in) above bottom of partition panel; or 355mm (14 in) above floor.	



KOALA KARE PRODUCTS

KB150-99-INB BABY CHANGING STATION BED LINERS

Disposable liners for use with Baby Changing Stations above. Large 330mm W x 485mm H (13 x 19 in), 3-ply biodegradable, 500 liners per case.



BOBRICK PRODUCT WARRANTIES AND LIMITATIONS

Product Warranties

The following Bobrick products are warranted to be free from defects in workmanship and material under normal usage from the date of purchase for the periods set forth below. (Rust and discoloration to stainless steel parts resulting from exposure to harsh environmental and/or chemical conditions are not considered to be defects in workmanship or material and there is no express or implied warranty for such condition. Refer to Bobrick Advisory Bulletin TB-21, Effective Ways to Clean Stainless Steel.)

Washroom Accessories/Soap Dispensers	Limited Warranty
ConturaSeries® Washroom Accessories	3 years
Soap Dispensers B-306, B-4063, B-4112, B-822 Series	3 years

The following Bobrick mirrors are warranted against silver spoilage from the date of purchase for the periods set forth below:

Mirrors	Limited Warranty
B-290, B-2908, B-292 Series	15 years
B-165, B-1658, B-166 Series	10 years

The following Bobrick hand dryers are warranted to be free from defects in workmanship and material under normal usage from the date of purchase for the periods set forth below:

Hand Dryers	Limited Warranty
AirCraft® Dryers B-700, B-750. Eclipse® Dryers B-740, B-748	Motor brushes for 3 years; all other parts for 10 years
AirPro™ B-709	
Elan™ B-715, B-715E	5 years
Compac™ B-710, B-710E. Cub™ B-705, B-705E	1 year

The following Koala Kare® products are warranted to be free from defects in workmanship and material under normal usage, and a replacement policy against vandalism from the date of purchase for the periods is set forth below:

Koala Kare Product	Limited Warranty
Baby Changing Stations	5 years
KB100-00-INB, KB101-00-INB, KB110-SSRE-INB, KB110-SSWM-INB	
Child Protection Seat KB102-00-INB	5 years

Other Products

Bobrick washroom accessories not listed in this section are warranted to be free from defects in workmanship and material under normal usage service for one year from the date of purchase. (Rust and discoloration to stainless steel parts resulting from exposure to harsh environmental and/or chemical conditions are not considered to be defects in workmanship or material and there is no express or implied warranty provided for such condition. Refer to Bobrick Advisory Bulletin TB-21, Effective Ways to Clean Stainless Steel.)

Limitations on Warranties

In all instances, the purchaser's exclusive remedy is for the repair or replacement, at Bobrick's option, of warranted defective products or parts. Bobrick will also bear the cost of the purchaser's return of defective products or parts to Bobrick. Bobrick's warranties set forth above do not cover damage resulting from vandalism. No other remedy (including, but not limited to, damages for field labor charges, lost profits, lost sales, injury to persons or property or any other incidental or consequential losses) is available.

Patent Numbers

Bobrick products are protected under one or more of the following Patent Numbers:
Australia: 1388224, 759452, 755057, 308253, 119406; **Brazil:** DI 5802183-3; **Canada:** 2342510, 2336013, 2309470, 2220402, 2196729, 1296148, 92305, 92304, 91501, 85550, 85356, 85191, 73046; **Europe:** 494430-001; **France:** 926706, 916396, 460661/2/3, 322840-45; **Germany:** M9303824.0, M9207892.3, M9207590.8, M9207589.4, M9203131.5, M9203130.7, M9106618.2, 60030625.9; **Hong Kong:** 9700489.9, 9700489.7, 9700489.1, 9700488, 9700487.7, 9700486.5; **Italy:** 76451, 67001, 66879, 66877, 64502; 64352, 64351; **Mexico:** 232123, 229103, 224638, 223121, 223120, 170289, 13915, 11878, 11286, 11285, 8428, 6021; **Singapore:** DU2003/563, DU2003/562/I, DU2003/11/B, DU2003/10/F; **Spain:** 130441/0, 129187/4, 129186/6; **Switzerland:** 120159, 119685; **United Kingdom:** 2031213, 2026406, 2026405, 2026390, 2022641, 2022640, 1089647, 1057441; **United States:** 7032351, 6502721, 6443411, 6276027, 6269503, 6131771, 6129245, 6119901, 6032819, 5988451, 5987677, 5927805, 5906015, 5887762, 5871113, 5660011, 5632414, 5476197, 5470039, 5377908, 5332286, 5261619, 5226625, 5167345, 4971343, 4949877, 4834404, D459131, D441139, D438344, D426412, D425253, D420764, D416726, D415857, D413419, D401708, D401093, D388578, D387590, D387583, D387229, D386027, D385445, D381818, D376920, D365449, D364059, D333923, D326581. Other patents pending.

Illustrations and descriptions herein are applicable to production as of the date of this catalog. The manufacturer reserves the right to and does from time to time make changes and improvements in designs and dimensions. Catalog No. IWAEO9, 24M. Feb 2009. © 2009 Bobrick Washroom Equipment, Inc. Printed in U.S.A.





BOBRICK

BUILDING VALUE SINCE 1906

CONTACTS

**Global Headquarters
Australia
Germany
United Kingdom**

TEL. No.

**+1.818.764.1000
1800.353158
0800.79.00.456
+44 (0)20 8366 1771**

FAX No.

**+1.818.503.9941
1800.221926
0800.79.00.789
+44 (0)20 8363 5794**

Email

**international@bobrick.com
international@bobrick.com
info@bobrick.de
uksales@bobrick.com**

Bobrick Washroom Equipment